

Week 5 Highlights

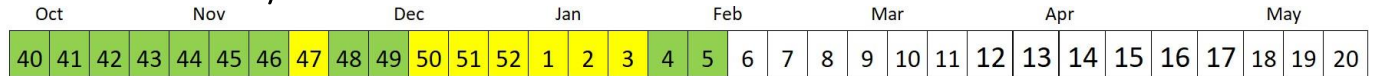
The weekly Influenza Watch summarizes the flu surveillance in the City of Cleveland. The metrics in this report include the number and percentage of emergency department visits for influenza-like illness, confirmed hospitalizations for the flu, and the deaths each week due to pneumonia and influenza.

- This week, flu activity is classified as “low”
- 7.85% of the deaths reported were due to pneumonia. There were three deaths was reported this week, which brings the season total to eight influenza deaths this season.
- There were 12 confirmed cases of influenza-associated hospitalization reported this week. There have been 226 influenza-associated hospitalizations so far this season.
- 1.78% of emergency department visits were for flu-like illness

Flu Intensity: Low



Seasonal Flu Intensity

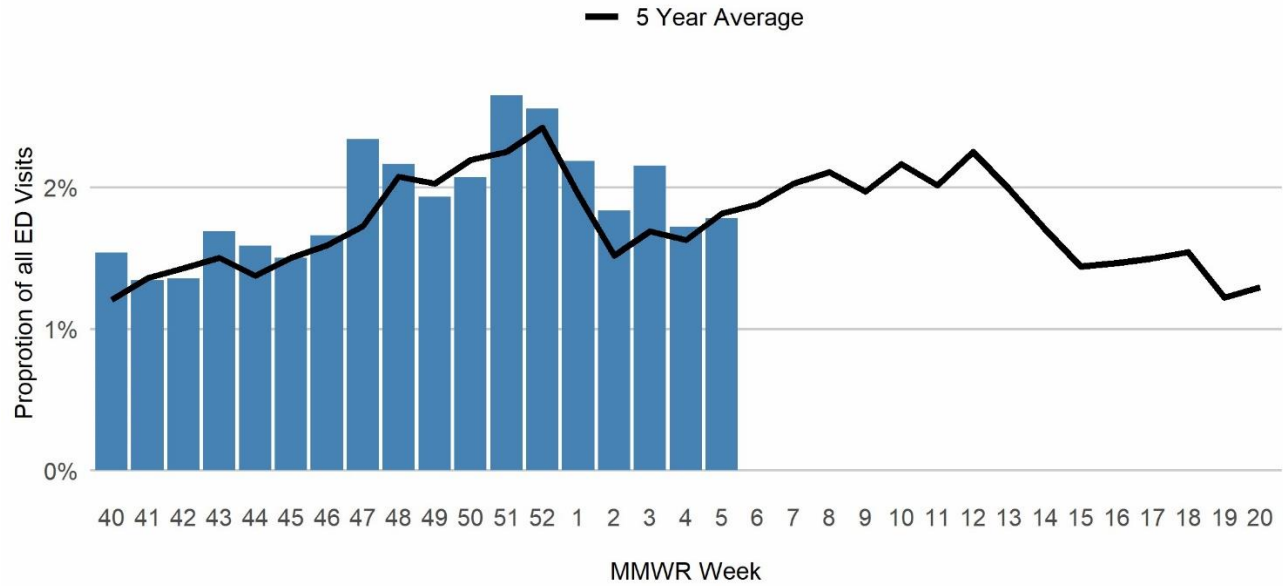


COVID-19 & Influenza (Flu) Intensity Indicators	This Week n (%)	Activity Compared to Last Week	Season Total n (%)
Emergency Department visits for Influenza-Like Illnesses	71 (1.78%)	+0.06%	1,374 (1.89%)
Confirmed Influenza Hospitalizations [‡]	12	+3	226
Confirmed COVID-19 Hospitalizations	1	-6	153
Pneumonia- & Influenza-Related Deaths	27 (7.85%)	+0.40%	300 (5.46%)

*Deaths represent all deaths for Cuyahoga County. All other data presented are City of Cleveland-specific. Data are preliminary and subject to change as more information is gained. The three indicators for calculating the intensity thresholds are based [on 2017 methodology from the Centers for Disease Control and Prevention.](#)

Influenza-Like Illnesses

Influenza ED Visits 2023-2024 by Week



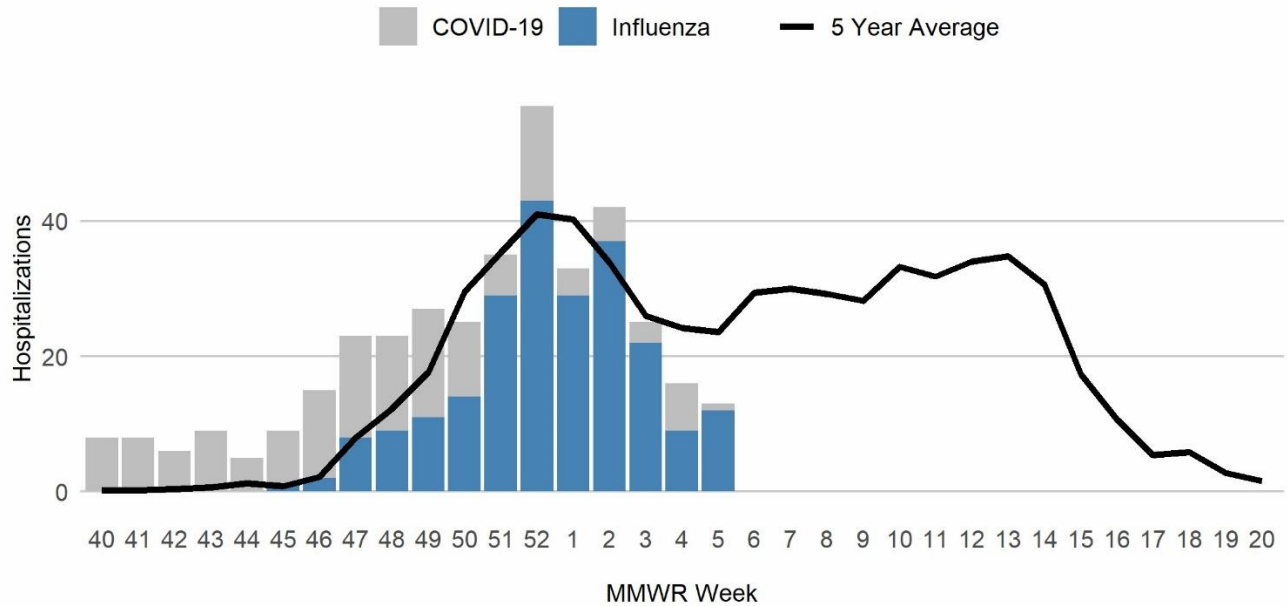
LOW < 1.88%	MODERATE 1.88% - 1.94%	HIGH 1.94% - 1.99%	VERY HIGH 1.99% <
-----------------------	----------------------------------	------------------------------	-----------------------------

The proportion of Emergency Room visits for influenza-like illnesses is below the low threshold and comparable to the 5-years average. This week, 55% of the visits were among males. Regarding race and ethnicity, 34% of visits were Black or African American individuals; 27% were among White individuals; and 39% of visits were among other racial groups. Roughly, a third (31%) of visits were among Hispanic or Latin individuals. The median age this week is 8 years.

Data Source: Health Monitoring Systems: EpiCenter 3.5.18. Data extracted on 2/7/2024.
Low, Moderate, and High intensity thresholds are defined as the 50%, 90%, and 99% Confidence Intervals, respectively, based on the 5-Year Average of previous seasons

Influenza or COVID-19-Associated Hospitalizations

Influenza and COVID-19 Hospitalizations 2023-2024 by Week



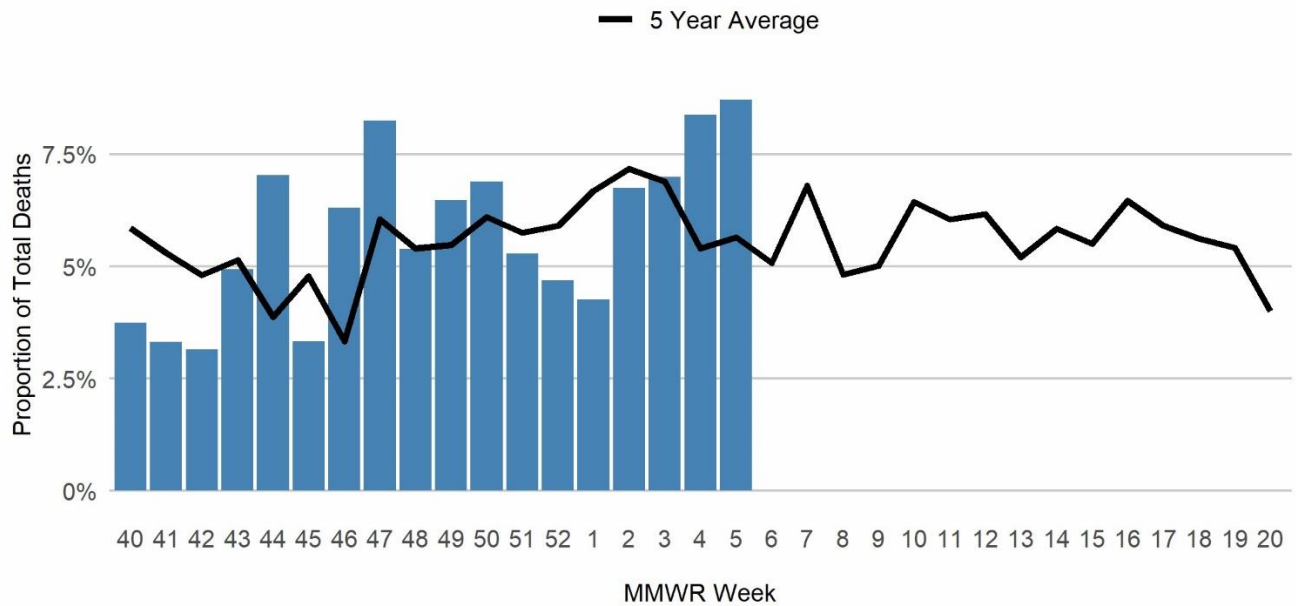
There have been four influenza-associated Hospitalizations (IAH) reported this week among individuals aged 1 to 71 years. Half of these hospitalizations were among residents under the age of 10. This marks decrease from the previous week and lower than expected at this point in the year based on the 5-year average. This brings the total influenza-associated hospitalizations for the season to 226. Influenza has accounted for more hospitalizations than COVID-19 this fall. COVID-19 hospitalizations decreased with one reported during the current week.

Data Source: Ohio Department of Health: Ohio Disease Reporting System. Data extracted on 2/1/2024. Data are preliminary and subject to change as more information is gained.

Low, Moderate, and High intensity thresholds are defined as the 50%, 90%, and 99% Confidence Intervals, respectively, based on the 5-Year Average of previous seasons.

Pneumonia- & Influenza-Associated Deaths*

Influenza, COVID-19, and Pneumonia Deaths 2023-2024 by Week



LOW < 6.02%	MODERATE 6.02% - 6.19%	HIGH 6.19% - 6.34%	VERY HIGH 6.34% <
-----------------------	----------------------------------	------------------------------	-----------------------------

There have been 27 deaths this reporting week due to pneumonia or influenza-related illnesses (P&I). The proportion of P&I deaths is above the very high threshold this week. This week, the data shows there were three influenza-associated deaths, which brings the season total to eight. In comparison, there have been 10 COVID-19 associated deaths thus far in the same period. The majority P&I deaths that occurred this week were among individuals aged 45 years and older.

Data Source: Cleveland Department of Public Health Department of Vital Statistics. Data compiled on 2/7/2024. Data are preliminary and subject to change as more information is gained.

*Deaths represent all deaths for Cuyahoga County. All other data presented are City of Cleveland-specific.

Low, Moderate, and High intensity thresholds are defined as the 50%, 90%, and 99% Confidence Intervals, respectively, based on the 5-Year Average of previous seasons.