



## WEEKLY INFLUENZA SURVEILLANCE REPORT

October 23 - October 29, 2016 (MMWR Week 43)

### Highlights

Flu activity is low<sup>1</sup> for 4<sup>th</sup> straight week. The flu rating scale is here: <https://ccbh-new.squarespace.com/flu-weekly-reports/?rq=flu>

Pneumonia-related deaths accounted for 8.6% of all deaths. No flu related deaths were reported.

One confirmed case of flu associated hospitalization was reported this week.

3.0% of emergency room visits were due to flu like illness this week.

### Local Flu Activity Dashboard (All data are preliminary and may change as updated information are received.)

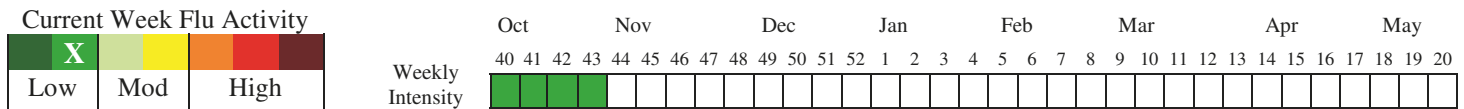


Table 1. Cuyahoga County Influenza Data Dashboard

Influenza (Flu) Indicator	Current Activity Level	Activity Compared to Last Week	#Weeks <sup>1234</sup>	2016-2017 Season Total/Trend
Percent of pneumonia deaths & number of flu related deaths - [Fig 1]	Pneumonia: 8.6% Flu: 0 deaths	15.2% Stable	▲ 3 ● 1	Trend data will start in week 45
Influenza like illness (ILI) doctor visits [Fig 2]	Cuyahoga: 1.72% athenahealth: 0.25%	258% 10.6%	▲ 1 ● 1	Trend data will start in week 45
Flu associated hospitalizations [Fig 3]	1	(1)	▼ 1	Trend data will start in week 45
School absenteeism due to <b>ILLNESS ONLY</b> - [Fig 4A]	Northeast: 3.0% Northwest: 2.7% Southeast: N/A Southwest: 2.2%	100% 42.1% N/A (21.4%)	▲ 1 ▲ 1 N/A ▼ 1	Trend data will start in week 45
School absenteeism due to <b>ALL CAUSES</b> - [Fig 4B]	Northeast: NA Northwest: NA Southeast: NA Southwest: 7.3%	N/A N/A N/A 265%	N/A N/A N/A ▲ 1	Trend data will start in week 45
Emergency room visit due to ILI [Fig 5]	3.0%	Stable	▲ 1	Trend data will start in week 45
Sales of over-the-counter medications used to treat ILI. [Fig 6]	276	7.0%	● 2	Trend data will start in week 45
Congestion & cough complaints [Fig 8]	10.9%	0.6%	● 3	Trend data will start in week 45
Vomiting & nausea complaints [Fig 9]	9.7%	0.5%	● 3	Trend data will start in week 45
Diarrhea complaints [Fig 10]	2.6%	22.5%	▲ 1	Trend data will start in week 45

<sup>1</sup>Due to small percentages, caution should be used while interpreting the 'Activity Compared to Last Week' box.

<sup>2</sup>For figures 2, 4a-4b, ▲ = (Increase ≥ 20%), ▼ = (Decrease ≥ -20%), ● = Stable (-19.9% to +19.9%)

<sup>3</sup>For figures 1, 5-10, ▲ = (Increase ≥ 10%), ▼ = (Decrease ≥ -10%), ● = Stable (-9.9% to +9.9%)

<sup>4</sup>For flu related deaths (Fig 1) & Fig 3, ▲ = (Increase # of deaths/cases), ▼ = (Decrease # of deaths/cases), ● = Stable (Same # of deaths/cases)



## WEEKLY INFLUENZA SURVEILLANCE REPORT

### October 23 - October 29, 2016 (MMWR Week 43)

### Flu Summary

This report is intended to provide an overview of influenza related activity occurring in Cuyahoga County while providing some information on state activity that is one week behind the current week. It will be published on a weekly basis and can be found at the following website: <http://www.ccbh.net/flu-weekly-reports/?rq=flu>

*Note: Data are provisional and subject to change. Updates will be included in future reports.*

#### **Pneumonia and Influenza (P&I) Mortality**

8.6% of all deaths reported to vital statistics departments in our county were due to pneumonia. Adults 65 years old and older accounted for 76.2% of all pneumonia related deaths. No influenza related deaths occurred this week; one death so far this flu season. **(Figure 1).**

#### **Influenza-Like Illness (ILI) Reports**

Athenahealth reported that 0.25% patients had ILI this week and 0.23% for week 42. One sentinel provider reported 1.72% of patients had flu-like symptoms this week **(Figure 2)**. ILI is defined as a fever ( $\geq 100^{\circ}$  F), **and** cough and/or sore throat.

#### **Influenza-Associated Hospitalizations and Influenza-Associated Pediatric Mortality**

One confirmed case of influenza-associated hospitalizations in Cuyahoga County was reported this week **(Figure 3)**. Twelve statewide confirmed influenza associated hospitalizations were reported in week 43. No statewide pediatric flu related deaths has occurred so far this flu season.

#### **School Absenteeism**

Participating schools in Cuyahoga County reported the percentage (median = 2.3%) of absenteeism *due to any illness* on Tuesday **(Figure 4A)**. **Figure 4B** shows the total absenteeism *due to any reason* (median = 7.3%).

#### **Emergency Department (ED) visits and Over-the-Counter (OTC) Medication Sales**

3.0% of all ED visits were for fever + ILI symptoms. Approximately 100 more patients visited EDs for fever and ILI symptoms this week compared to the previous 5-year weekly median **(Figure 5)**. **Figure 6** shows approximately 110 more OTC products per drugstore were purchased this week than the previous 5-year weekly median.

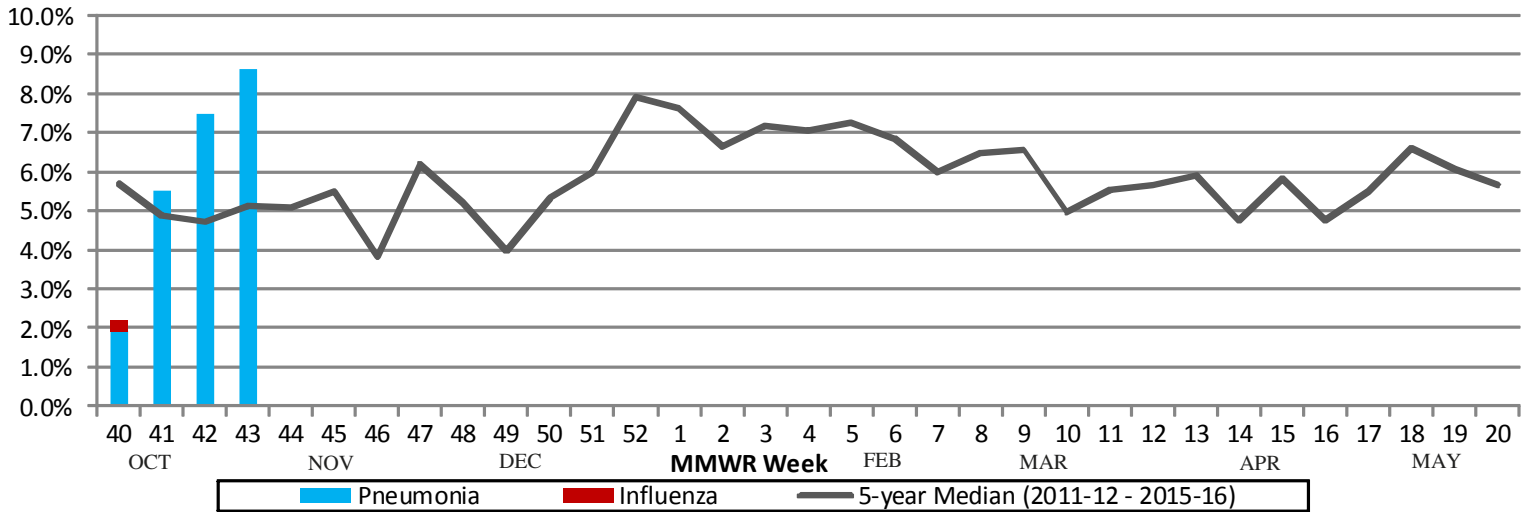
Three other maps show, by zip code, the frequency of ED visits for three symptoms that are common during the fall and winter seasons and are of interest to the general public: congestion and cough **(Figure 8)**, vomiting and nausea **(Figure 9)**, and diarrhea **(Figure 10)**.

Descriptions of data sources used to complete the weekly influenza write-up can be found on the last page of this report.

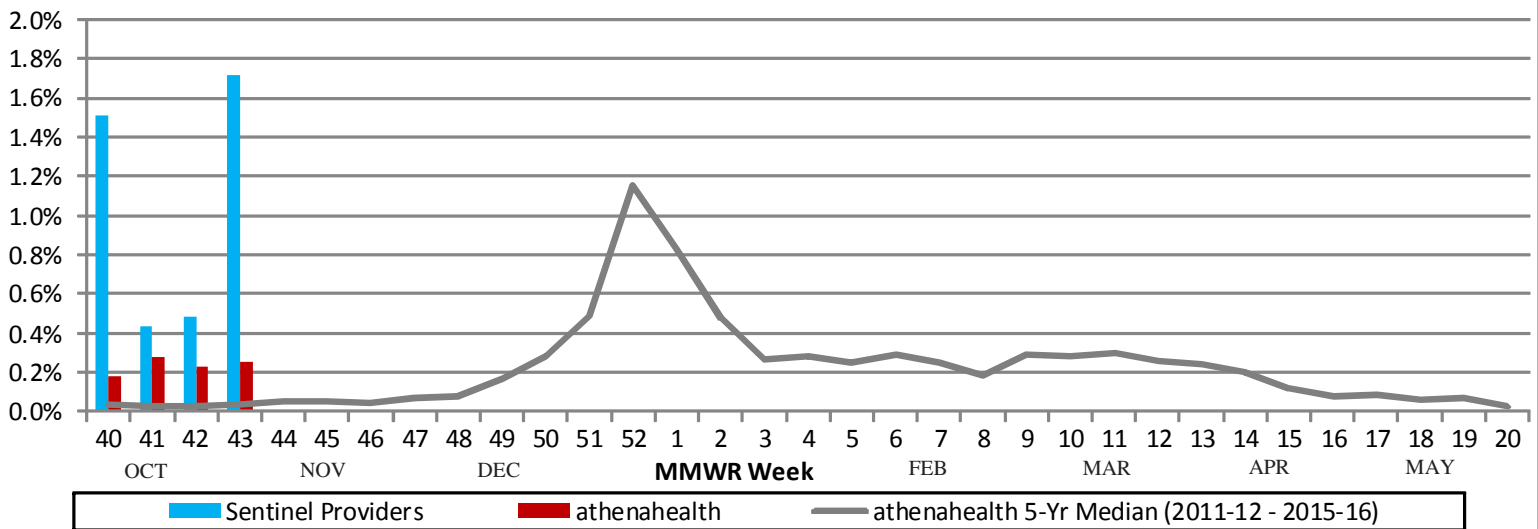
#### **Additional Influenza Activity Links**

- Weekly U.S. Influenza Surveillance Report – <http://www.cdc.gov/flu/weekly>
- Ohio Influenza Surveillance – <http://www.odh.ohio.gov/features/odhfeatures/seasflu/ohfluactivity.aspx>

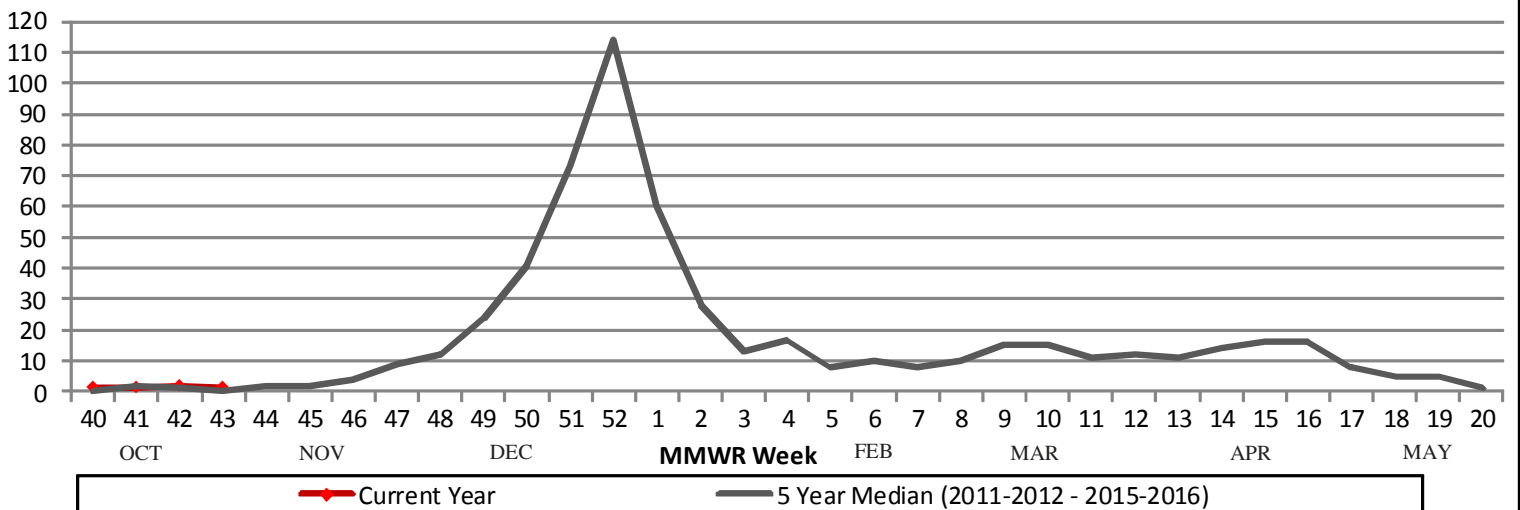
**Figure 1: Percentage of Deaths Due to Pneumonia & Influenza (P&I)  
Cleveland, Euclid, Lakewood, & Parma Vital Statistics Departments**



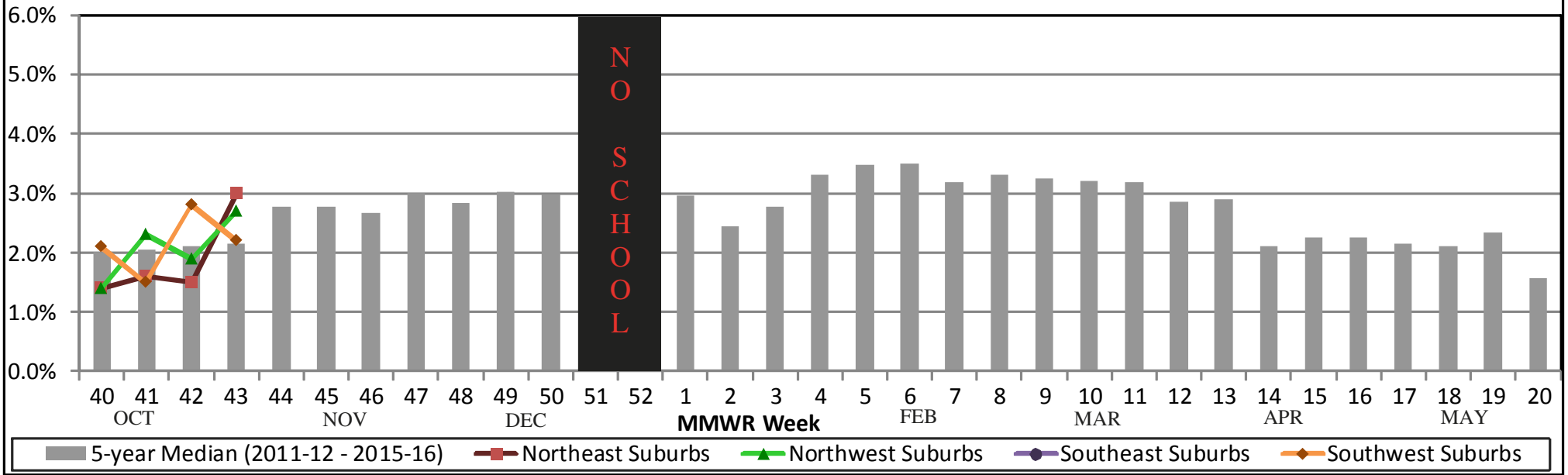
**Figure 2: Percent of Influenza-Like Illness (ILI) Visits Influenza Sentinel  
Provider Surveillance Network and ILI Visits via athenahealth**



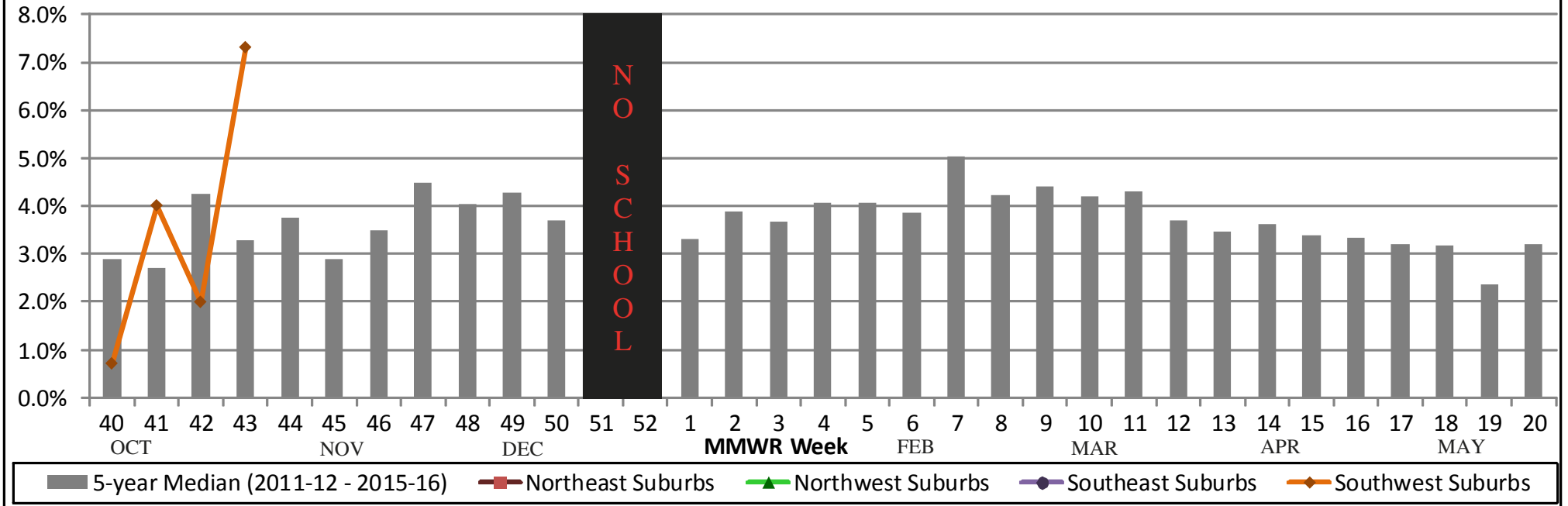
**Figure 3: Number of Influenza-Associated Hospitalizations  
in Cuyahoga County (using event date)**



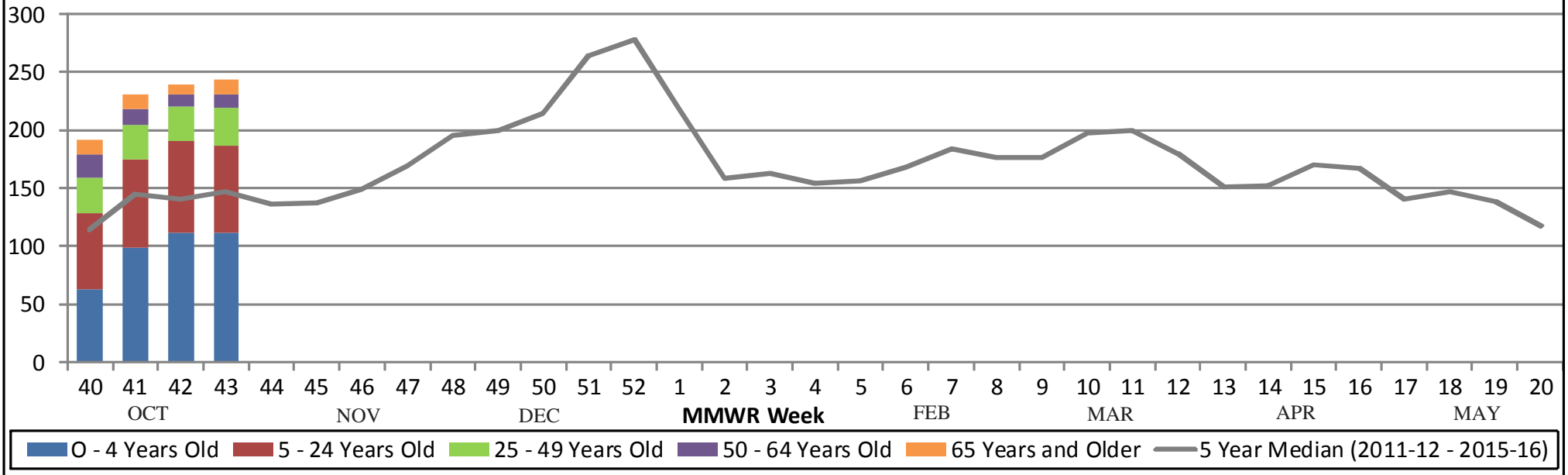
**Figure 4A: School Absenteeism (due to any illness) in Cuyahoga County**



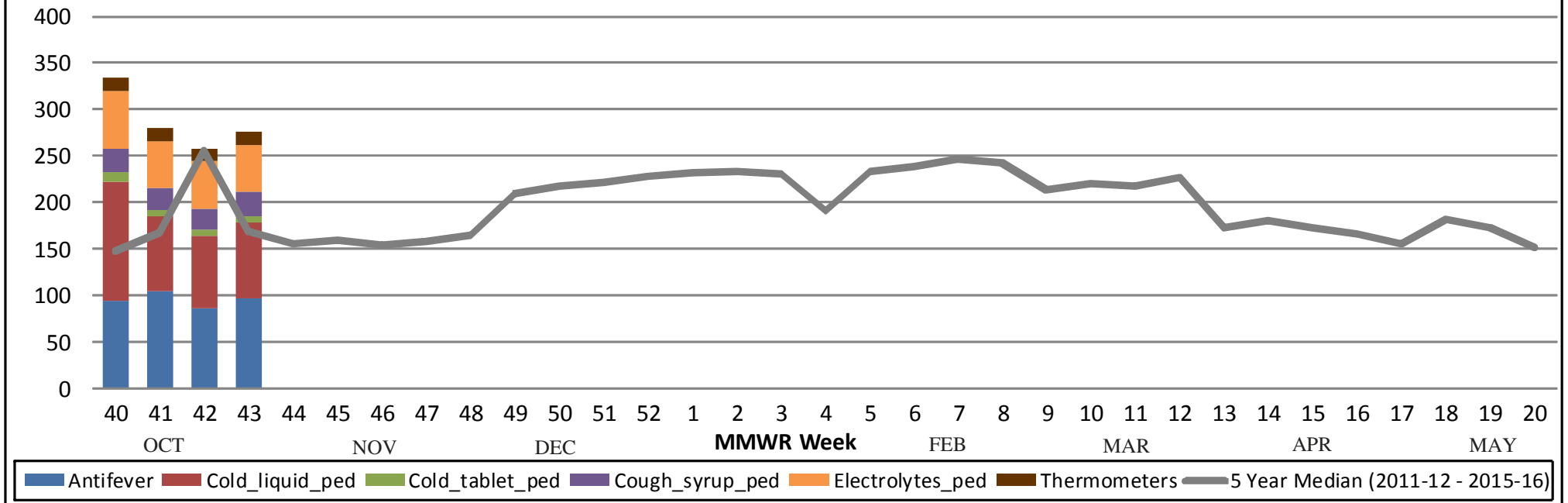
**Figure 4B: School Absenteeism (due to any reason) in Cuyahoga County**



**Figure 5: Cuyahoga County Hospital ED Visits for ILI & Fever Symptoms by Age Group**



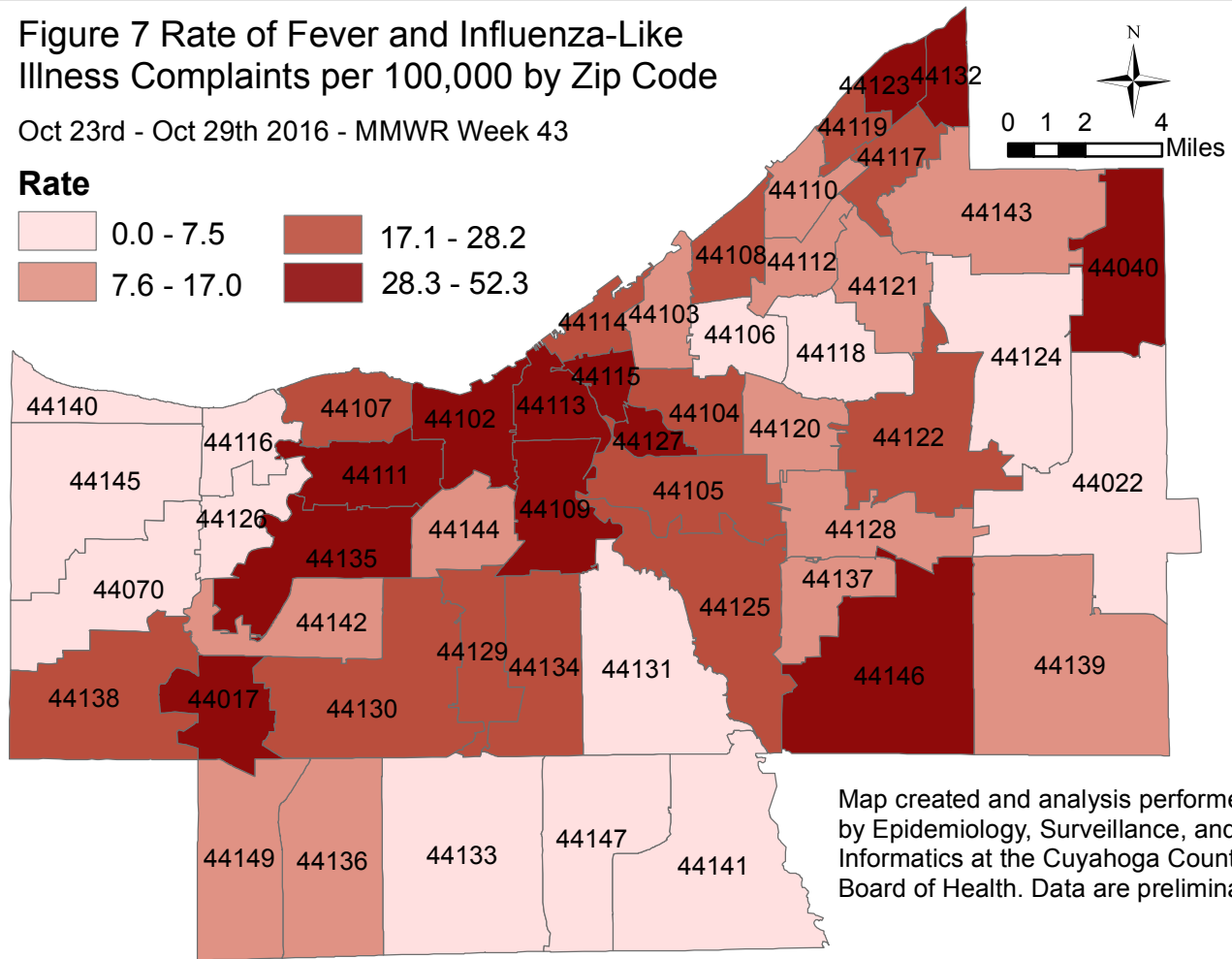
**Figure 6: Comparison of Average Weekly OTC Products Sold in Cuyahoga County Drugstores**



### Figure 7 Rate of Fever and Influenza-Like Illness Complaints per 100,000 by Zip Code

Oct 23rd - Oct 29th 2016 - MMWR Week 43

#### Rate

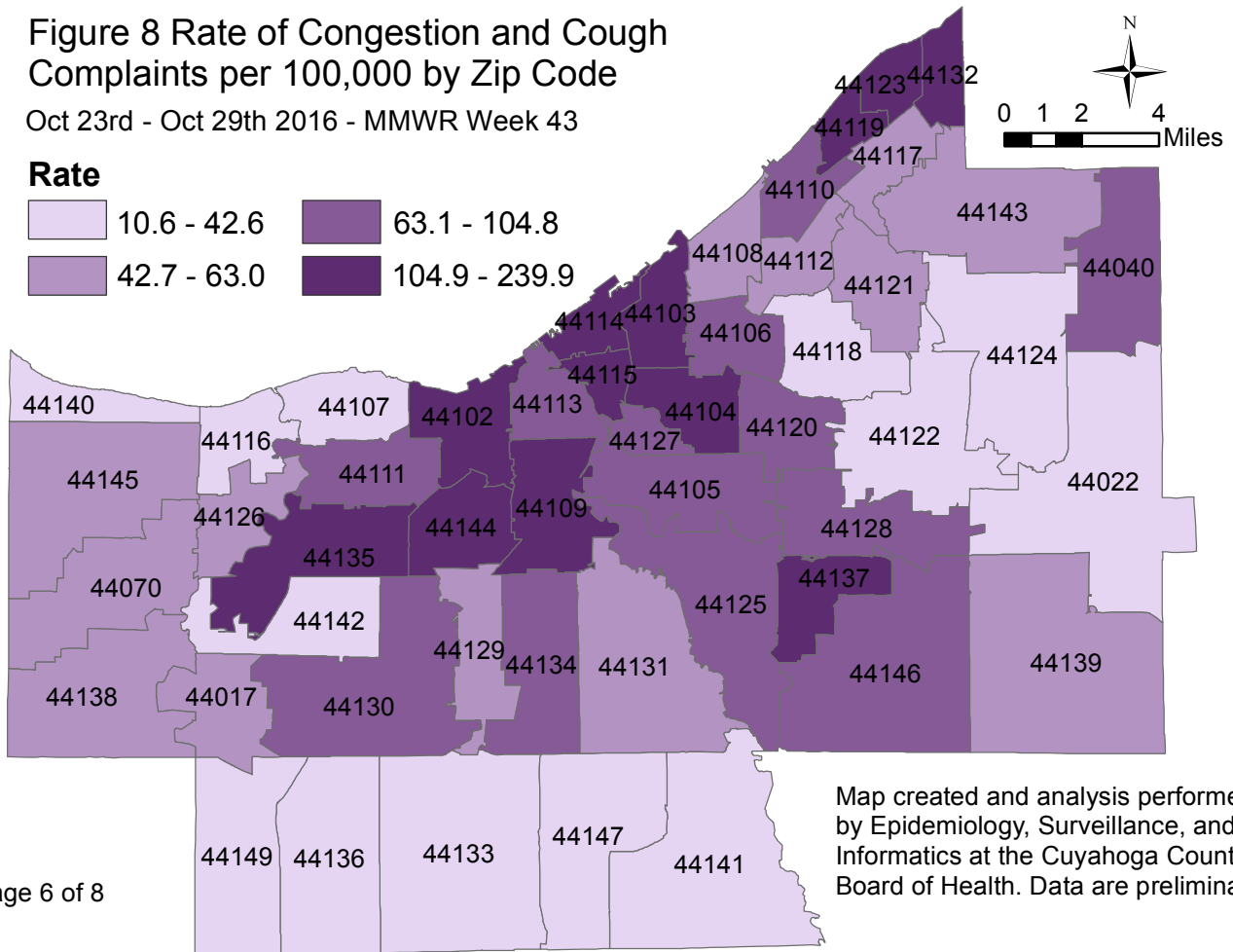


Map created and analysis performed by Epidemiology, Surveillance, and Informatics at the Cuyahoga County Board of Health. Data are preliminary.

### Figure 8 Rate of Congestion and Cough Complaints per 100,000 by Zip Code

Oct 23rd - Oct 29th 2016 - MMWR Week 43

#### Rate

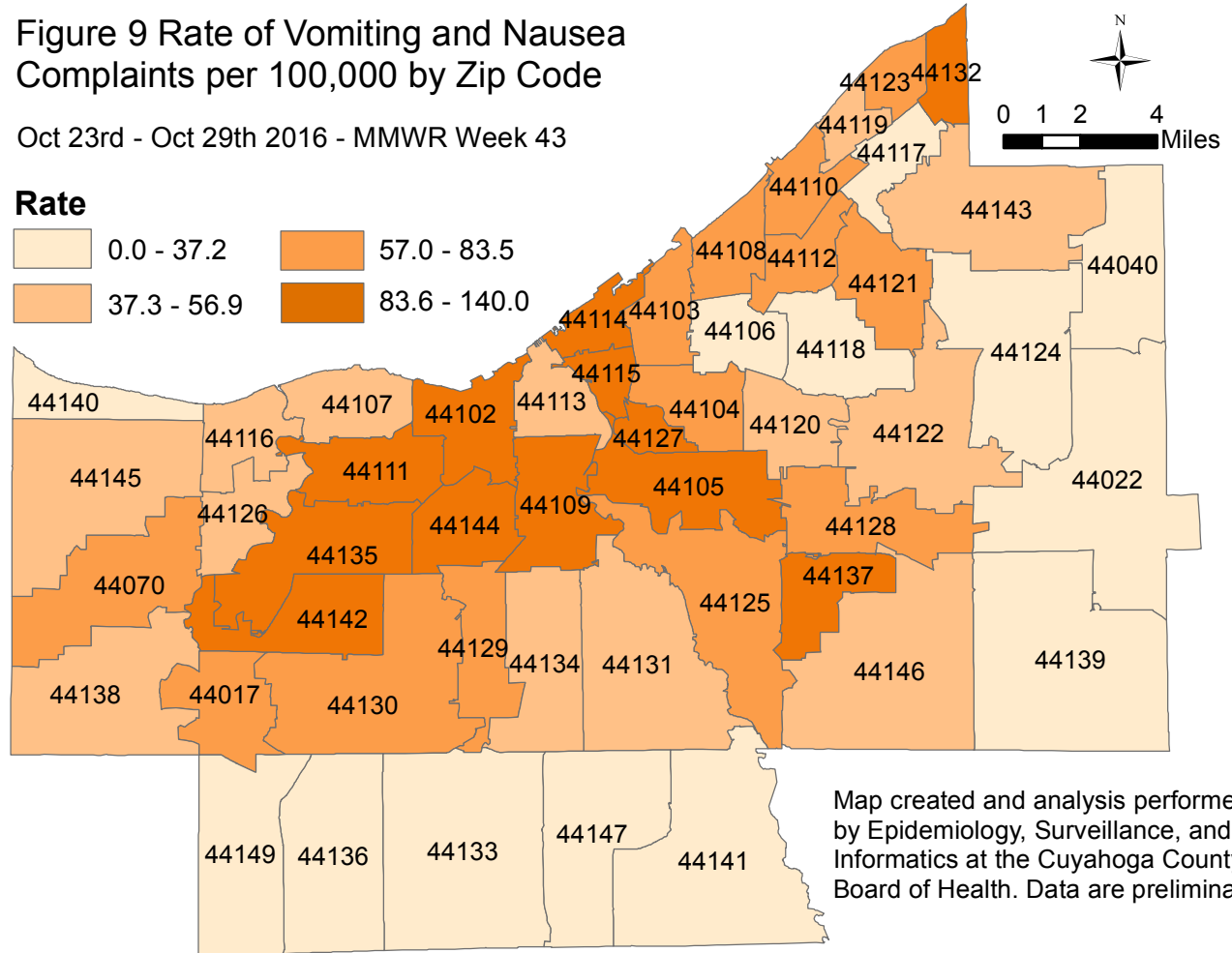
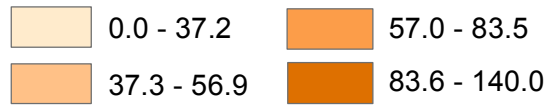


Map created and analysis performed by Epidemiology, Surveillance, and Informatics at the Cuyahoga County Board of Health. Data are preliminary.

### Figure 9 Rate of Vomiting and Nausea Complaints per 100,000 by Zip Code

Oct 23rd - Oct 29th 2016 - MMWR Week 43

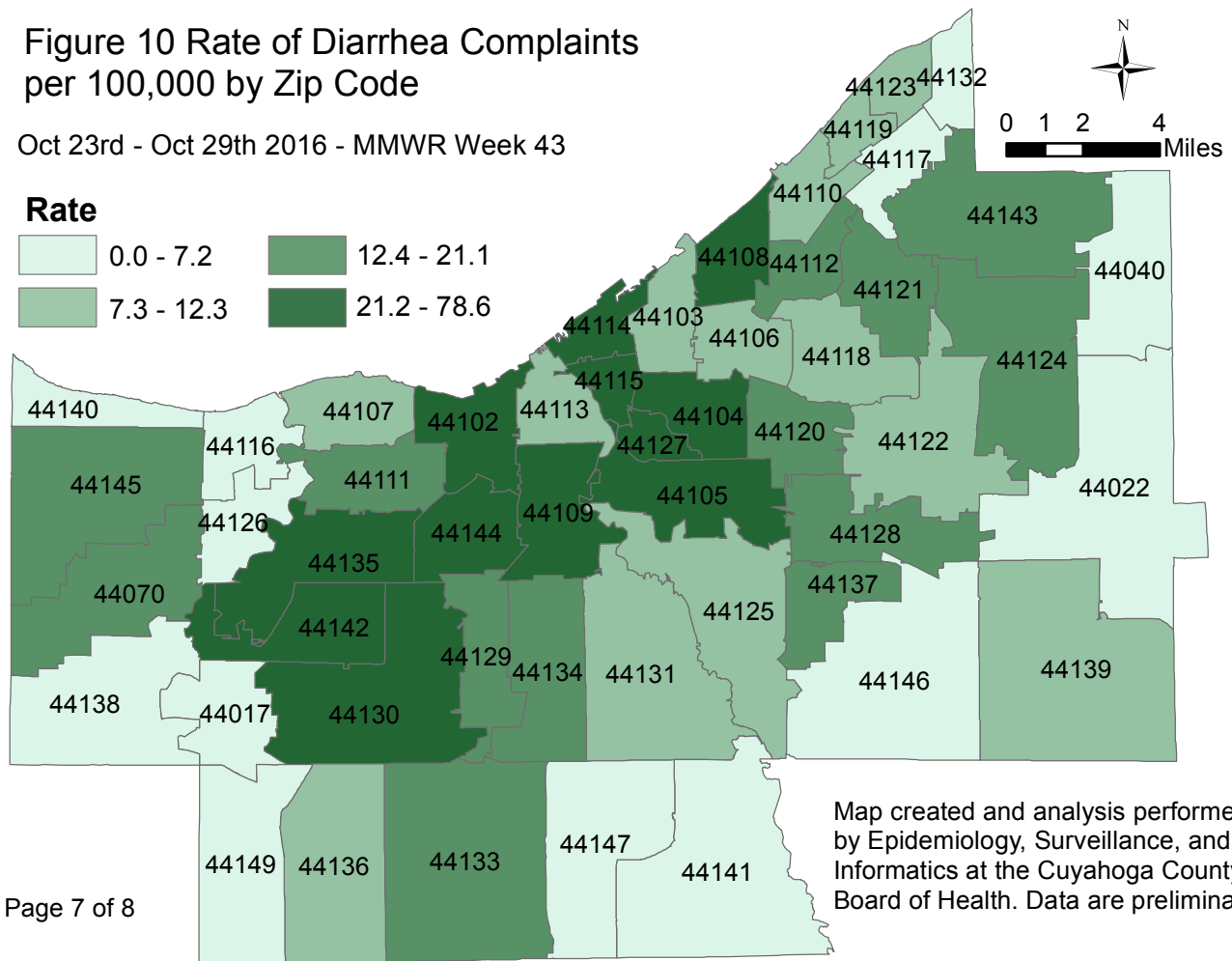
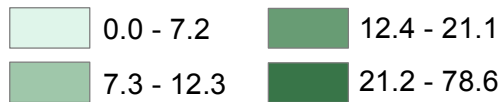
#### Rate



### Figure 10 Rate of Diarrhea Complaints per 100,000 by Zip Code

Oct 23rd - Oct 29th 2016 - MMWR Week 43

#### Rate



## Sources of Influenza Surveillance Data

Six types of data sources are examined on a weekly basis to help determine the influenza activity level for Cuyahoga County:

- 1) **Ohio Department of Health (ODH) Seasonal Influenza Activity Summary :** The ODH influenza summary provides state-wide data . Data used from this report include: frequency of fever plus influenza-like illness (ILI) associated hospitalizations, number of influenza-associated pediatric mortalities, and number of lab-confirmed influenza cases.
  - A) **Influenza-associated Hospitalizations (ODRS):** Influenza-associated hospitalizations are reported by the Cuyahoga County Board of Health (CCBH) and hospitals using the Ohio Disease Reporting System (ODRS). Hospitalizations can be used as an indicator of the severity of illness during a particular influenza season. This condition became reportable in January 2009.
  - B) **Influenza-associated Pediatric Mortality (ODRS):** Influenza-associated pediatric mortalities are reported into ODRS by CCBH and hospital staff. Pediatric deaths can be an indicator of the severity of illness during the influenza season. This condition became reportable in 2005.
  - C) **Sentinel Providers (ILINet):** Sentinel providers, through the US Influenza-like Illness Surveillance Network (ILINet), collect outpatient influenza-like illness (ILI) data. ILI is defined as a fever ( $> 100$  F), **and** cough *and/or* sore throat without another known cause. Providers report the total number of patients seen, by age group, on a weekly basis. Sentinel providers also submit specimens for influenza testing to the ODH laboratory throughout the influenza season. There are 2 sentinel providers enrolled in Cuyahoga County for the 2015-2016 season.
  - D) **ODH Laboratory Surveillance:** The Ohio Department of Health Laboratory reports the number of specimens that test positive for influenza each week. Generally, specimens are submitted by sentinel provider participants. A subset of the positive specimens is sent to CDC for further testing during the season.
- 2) **Mortality Reporting System (Vital Statistics):** Vital Statistics offices in Cuyahoga County (Cleveland, Euclid, Lakewood, & Parma) reports the percentage of deaths that are due to pneumonia or influenza that occur within their jurisdiction. Cleveland issues death certificates for 56 of the 59 cities in the county.
- 3) **ILI data (athenahealth)** "ILI estimates are based on insurance claims diagnoses, documented in athenahealth's database. Athenahealth is a healthcare technology and services company for electronic health records, medical billing, patient engagement, and care coordination."
- 4) **School Absenteeism data (due to illness and due to any reason):** More than 50 Cuyahoga County schools provide absenteeism data for each Tuesday on the number children absent due to any illness or due to any reason as well as sentinel schools that report week absenteeism data.
- 5) **National Retail Data Monitor (NRDM)-OTC Drug Purchases:** The NRDM collects over-the-counter (OTC) drug sales information from Cuyahoga County chain drug stores and grocery stores. Pediatric cold products, anti-fever products, and thermometer sales are monitored on a weekly basis.
- 6) **Emergency Department Visits (EpiCenter):** EpiCenter collects emergency department chief complaint data from hospitals and urgent care facilities across Cuyahoga County and classifies them into symptom and syndrome categories. Rates for chief complaints regarding fever + ILI and other symptoms commonly detected during the winter are analyzed.