

Current Season Summary:

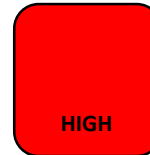
December 29, 2019 – January 4, 2020
MMWR Week 1

This week, there were 226 emergency department visits for influenza-like illnesses out of 7,111 total visits to emergency departments; there were 46 confirmed hospitalizations for influenza this week bringing the seasonal total to 170[‡]; and, there were 13 pneumonia- or influenza-related deaths out of 273 total deaths this week.

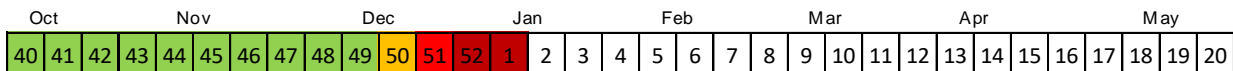
Influenza B is the predominant strain circulating this season and is associated with 73% of cases. Affected populations are *substantially* younger than in the previous 5 seasons. Of those with known vaccination status, 59% of those with Influenza B were not vaccinated and 75% of those with Influenza A were not vaccinated.

Flu Intensity This Week

Flu activity this week is Very High



Seasonal Flu Intensity



Flu Intensity Indicators	This Week n (%)	Season Total n (%)
Emergency Department Visits for Influenza-Like Illnesses	226 (3.18%)	1,978 (2.23%)
Confirmed Influenza Hospitalizations[‡]	46	170
Pneumonia- & Influenza-Related Deaths*	13 (4.8%)	170 (4.4%)

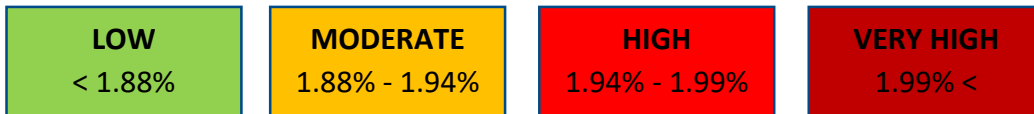
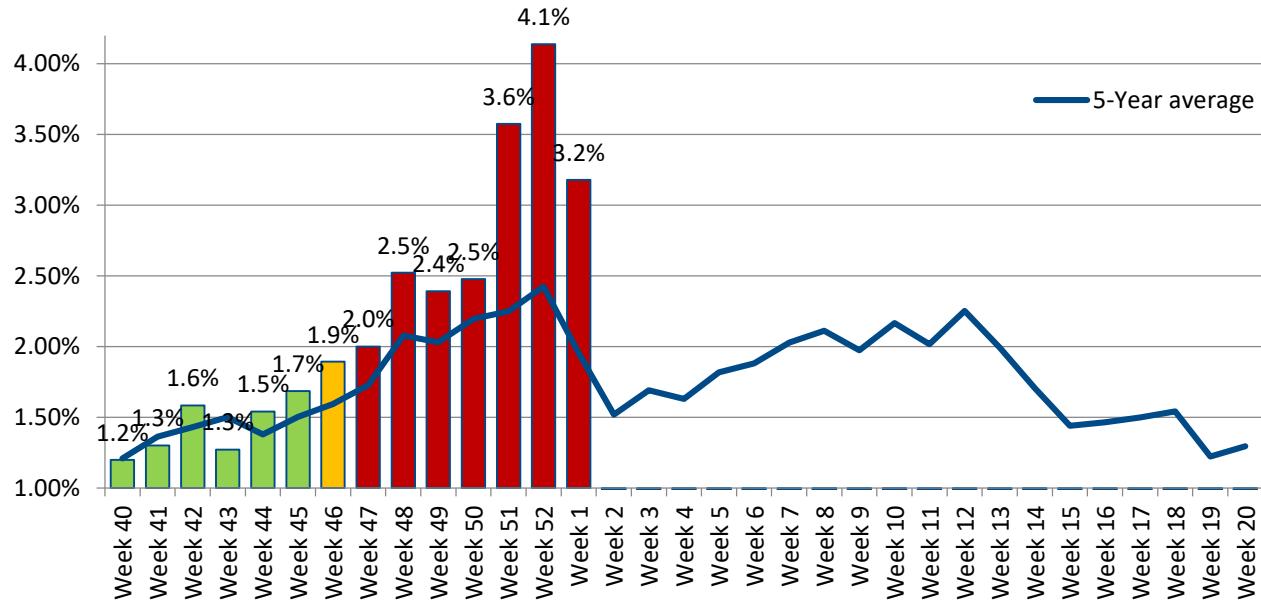
[‡] Prior to this week, number of hospitalizations was calculated using all confirmed numbers of cases that were closed and had all required information. Due to the large number of hospitalizations and delays in reporting, this methodology was updated to include cases that are still open but confirmed.

*Deaths represent all deaths for Cuyahoga County. All other data presented are City of Cleveland-specific

The three indicators for calculating the intensity thresholds are based [on 2017 methodology from the Centers for Disease Control and Prevention.](#)

Influenza-Like Illnesses

Figure 1: 2019-2020 Proportion of Emergency Department Visits for Influenza-Like Illnesses



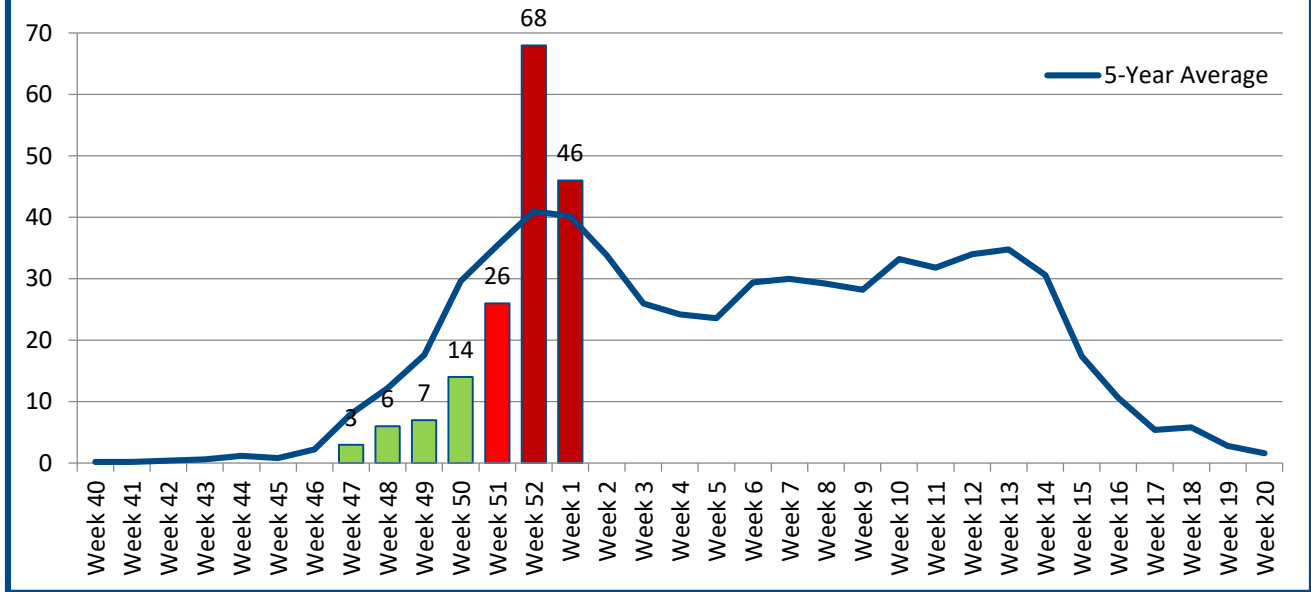
The proportion of Emergency Room visits for influenza-like illnesses remains elevated beyond what has been observed in 5 years. This week 58% of visits were among females. Regarding race and ethnicity, 22% of visits were Black or African American individuals; 18% were among White or Caucasian individuals; and nearly half (42%) of visits were among other racial groups. More than one third (36%) of visits were among Hispanic or Latinx individuals. The median age this week was 4 years.

Data Source: Health Monitoring Systems: EpiCenter 3.5.17. Data extracted on 1/6/2020.

Low, Moderate, and High intensity thresholds are defined as the 50%, 90%, and 99% Confidence Intervals, respectively, based on the 5-Year Average of previous seasons

Hospitalizations

Figure 2. 2019-2020 Confirmed Influenza-Associated Hospitalizations[¥]



LOW
< 22.71

MODERATE
22.71 – 25.05

HIGH
25.05 – 27.29

VERY HIGH
27.29 <

This season there have been at least 170 confirmed hospitalizations. The majority (73%) of these are Influenza B-related with 5 cases being the Victoria strain. One case tested positive for both Influenza A and Influenza B strains. Most cases (64%) occurred among Black or African Americans, 21% were among White or Caucasian populations, and 6% were among Hispanic or Latinx populations. A little more than half (56%) of all hospitalizations were females. The median age of cases this season is 35 years which is substantially younger than the 5-year median age of 60 years.

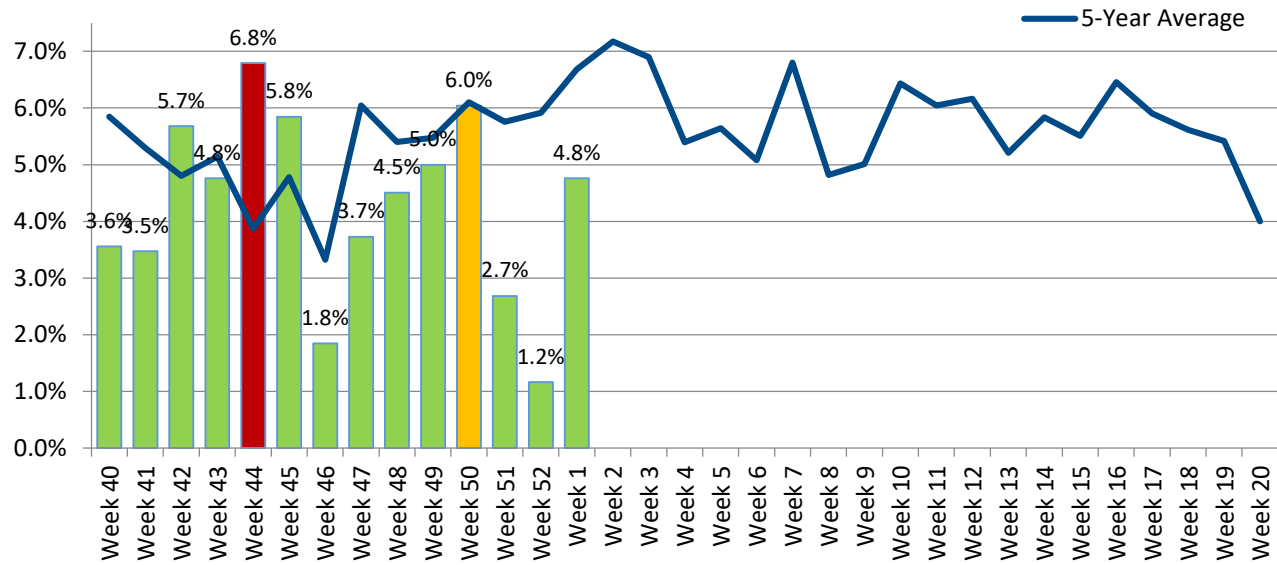
[¥] Prior to this week, number of hospitalizations was calculated using all confirmed numbers of cases that were closed and had all required information. Due to the large number of hospitalizations and delays in reporting, this methodology was updated to include cases that are still open but confirmed.

Data Source: Ohio Department of Health: Ohio Disease Reporting System. Data extracted on 1/9/2019. Data are preliminary and subject to change as more information is gained.

Low, Moderate, and High intensity thresholds are defined as the 50%, 90%, and 99% Confidence Intervals, respectively, based on the 5-Year Average of previous seasons.

Pneumonia- & Influenza-Associated Deaths*

Figure 3. Proportion of Deaths Associated with Pneumonia or Influenza



LOW < 6.02%	MODERATE 6.02% - 6.19%	HIGH 6.19% - 6.34%	VERY HIGH 6.34%<
-----------------------	----------------------------------	------------------------------	----------------------------

The proportion of deaths due to pneumonia or influenza-related (P&I) illnesses is within the *low* threshold this week. This week, while not included in the data due to delays in reporting, the first influenza-related death in the state occurred in Cuyahoga County and was an individual that was younger than the age of 18. All other data-reported deaths this week occurred among individuals aged 45 years and older. Almost all P&I deaths that occurred this season were among individuals aged 45 years and older. To-date, only 3 P&I deaths have occurred among younger age groups. *Note that this number does not include the pediatric death this occurred week.*

Data Source: Cleveland Department of Public Health Department of Vital Statistics. Data compiled on 1/7/2020.

*Deaths represent all deaths for Cuyahoga County. All other data presented are City of Cleveland-specific

Low, Moderate, and High intensity thresholds are defined as the 50%, 90%, and 99% Confidence Intervals, respectively, based on the 5-Year Average of previous seasons