

EXECUTIVE SUMMARY
MMWR Week 17: April 26, 2015-May 2, 2015**Current Trends**

- Influenza-Associated Hospitalizations (IAH)**
 - There were a total of 11 IAH cases reported for this week
 - IAH cases decreased by 31.3% compared to last week (Week 16)
 - Adults aged 65-74 accounted for 36% of all reported hospitalizations
 - Females accounted for 64% of all IAH cases; compared to 36% for males
 - African-Americans accounted for 82% of all IAH cases
 - Cuyahoga County has 16.6% of all IAH cases in Ohio
 - The City of Cleveland has 7.2% of all IAH cases in Ohio
- Influenza Deaths
 - There was 1 influenza death reported during Week 17 for Cuyahoga County. There have been a total of 46 deaths in Cuyahoga County (18 total deaths in Cleveland) over the 2014-2015 influenza season

IAH Cases: Comparison to Previous Years

- State of Ohio
MMWR Week 40-Week 16, 2014: *Data not available*
MMWR Week 40-Week 16, 2015: 9184
Percent increase in IAH cases not available
- Northeast Region of Ohio
Week 16, 2014: *Data not available*
Week 16, 2015: 42
Percent increase in IAH cases not available

Vaccine Information

- The 2014-2015 trivalent influenza vaccine has been made to protect against H1N1, H3N2, and Influenza B
- Everyone 6 months of age or older should get vaccinated, especially the people listed below:
 - Pregnant women
 - Children younger than 5, but especially children younger than 2 years old
 - People 65 years of age and older
 - People of any age with certain chronic medical conditions including:
 - high blood pressure, liver, heart or lung disease, diabetes, asthma, cancer or a weakened immune system
 - People who live in nursing homes and other long-term care facilities
 - People who live with or care for those at high risk for complications from flu

Prevention Recommendations for Healthcare Professionals and General Public

- Get vaccinated
- Conduct proper handwashing techniques, and wash hands often
- Cover your mouth and nose when coughing and sneezing
- If you become ill, stay home and follow-up with your doctor and take flu antiviral drugs if your doctor prescribes them

Created by: CDPH Office of Communicable Disease Surveillance and Epidemiology

Data Sources: CDPH Office of Vital Statistics, Ohio Disease Reporting System (ODRS), Ohio Department of Health, Centers for Disease Control and Prevention. Version Date: 05.05.2015

**IAH: Case reporting fluctuations may contribute to an unequal deviation in the number of weekly reported cases.



April 26th to May 2nd, 2015 (MMWR Week 17) Highlights

Influenza Deaths:

There was a total of 1 influenza death reported this week

- Adults aged 85 and over accounted for 100% of all influenza related deaths reported
- Influenza deaths accounted for 0.28% of all deaths reported this week
- The number of influenza deaths **increased** compared to last week (0 deaths)

Influenza Deaths	Age	Sex	Race	Residence
#1	87	Male	White	Cleveland

**Underlying medical conditions will not be provided due to the low number of deaths reported.*

Influenza-Associated Hospitalizations:

There were a total of 11 influenza-associated hospitalizations reported this week

- Adults aged 65-74 accounted for 36% of all reported hospitalizations
- Hospitalizations decreased by **31.3%** (↓) compared to last week (16 hospitalizations)
- The average age of influenza-associated hospitalizations was 56 years
- African-Americans accounted for 82% of all reported hospitalizations
- Females accounted for 64% of all reported hospitalizations; compared to 36% for males

Race	Number of Reported Hospitalizations	Percentage of Hospitalizations
African-American	9	82%
Asian	0	0%
White	2	18%
Other	0	0%
Unknown	0	0%

Sex	Number of Reported Hospitalizations	Percentage of Hospitalizations
Female	7	64%
Male	4	36%
Unknown	0	0%

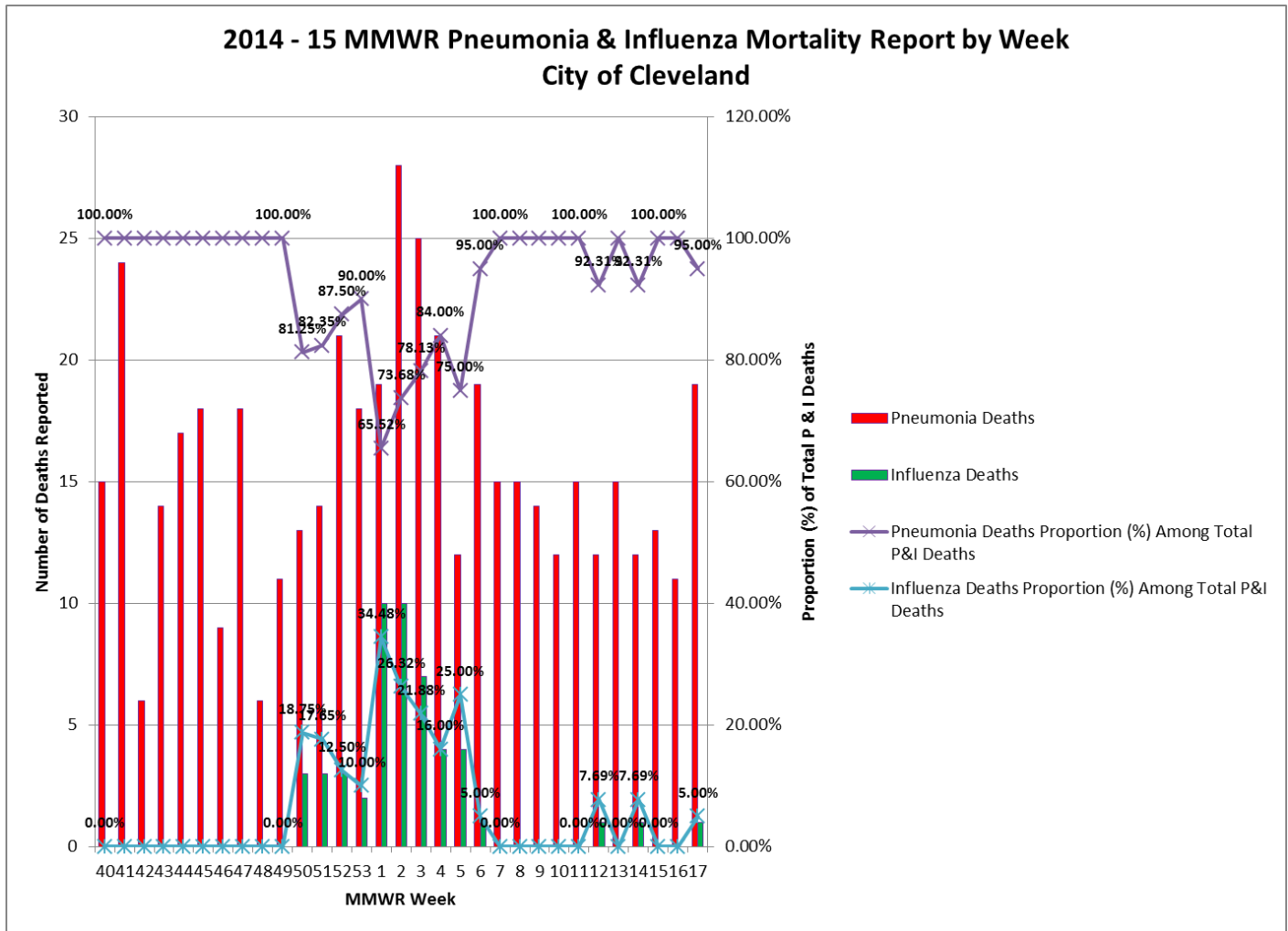
Created by: CDPH Office of Communicable Disease Surveillance and Epidemiology

Data Sources: CDPH Office of Vital Statistics, Ohio Disease Reporting System (ODRS), Ohio Department of Health, Centers for Disease Control and Prevention. Version Date: 05.05.2015

***IAH: Case reporting fluctuations may contribute to an unequal deviation in the number of weekly reported cases.*

Age	Number of Reported Hospitalizations	Percentage of Hospitalizations
0-14 years	0	0%
15-24 years	0	0%
25-44 years	3	27%
45-64 years	3	27%
65-74 years	4	36%
75-84 years	0	0%
85 years and older	1	9%
Age not reported	0	0%

Pneumonia and Influenza Mortalities Reported by Week in the City of Cleveland:



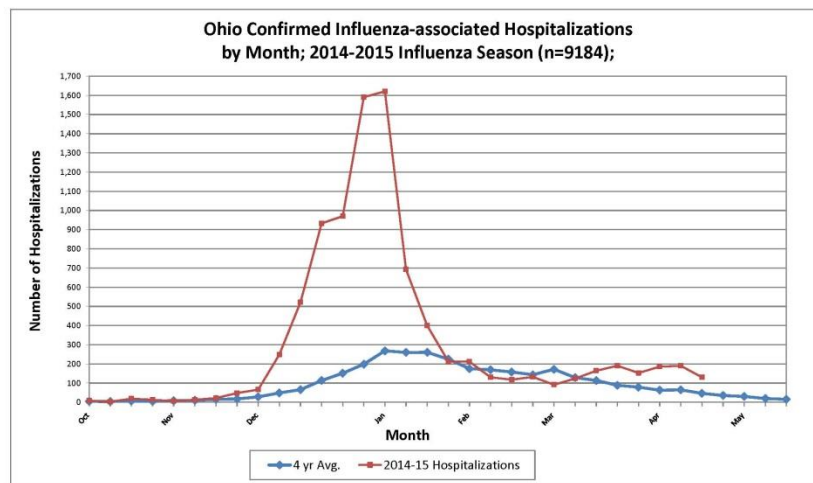
Created by: CDPH Office of Communicable Disease Surveillance and Epidemiology

Data Sources: CDPH Office of Vital Statistics, Ohio Disease Reporting System (ODRS), Ohio Department of Health, Centers for Disease Control and Prevention. Version Date: 05.05.2015

**IAH: Case reporting fluctuations may contribute to an unequal deviation in the number of weekly reported cases.

Confirmed Influenza-Associated Hospitalizations (IAH) by Month for the State of Ohio:

- There have been a total of 9184 influenza associated hospitalizations in the State of Ohio as of April 25th, 2015
- Cuyahoga County has 1524 out of the 9184 influenza associated hospitalizations (16.6%)
- The City of Cleveland has 660 out of the 9184 influenza associated hospitalizations (7.2%)

**National IAH Data from CDC for MMWR Weeks 40-16 (April 19, 2015 to April 25, 2015)**

- Overall hospitalization rate was 64.3 per 100,000 population
- The highest rate of hospitalization was among adults aged ≥ 65 years (316.8 per 100,000 population), followed by children aged 0-4 years (56.4 per 100,000 population)
- Among all hospitalizations, 86.4% were associated with influenza A, 12.7% with influenza B, 0.5% with influenza A and B co-infection, and 0.3% had no virus type information
- Among those with influenza A subtype information, 99.7% were H3N2 virus and 0.3% were 2009 H1N1
- The majority (93.7%) of hospitalized adults had at least one reported underlying medical condition; the most commonly reported were metabolic disorders, cardiovascular disease, and obesity
- The most commonly reported underlying medical conditions among pediatric patients were asthma, neurologic disorders and obesity
- A total of 133 influenza-associated pediatric deaths have been reported during the 2014-2015 season from 39 states; Ohio is one of these states with 6 pediatric deaths

National IAH Data from CDC for MMWR Week 16 (April 19, 2015 to April 25, 2015)

- During week 16, 6.7% of all deaths reported through the 122 Cities Mortality Reporting System were due to Pneumonia & Influenza (P&I)

Created by: CDPH Office of Communicable Disease Surveillance and Epidemiology

Data Sources: CDPH Office of Vital Statistics, Ohio Disease Reporting System (ODRS), Ohio Department of Health, Centers for Disease Control and Prevention. Version Date: 05.05.2015

**IAH: Case reporting fluctuations may contribute to an unequal deviation in the number of weekly reported cases.