

HINT Report

Weekly Disease Surveillance Report

Department of Public Health

Office of Communicable Disease
Surveillance and Epidemiology

75 Erievue Plaza, 3rd Flr

Cleveland, Ohio 44114

Office: 216/664-3747

Fax: 216/664-6159

www.clevelandhealth.org



Disease Surveillance Report for
MMWR Week 12

KEY INDICATORS^{1,2}|MMWR WEEK 12^{3,4}|3/22/15 TO 3/28/15

Syndromic Indicators

Respiratory syndromes represented the largest number of cases for the week

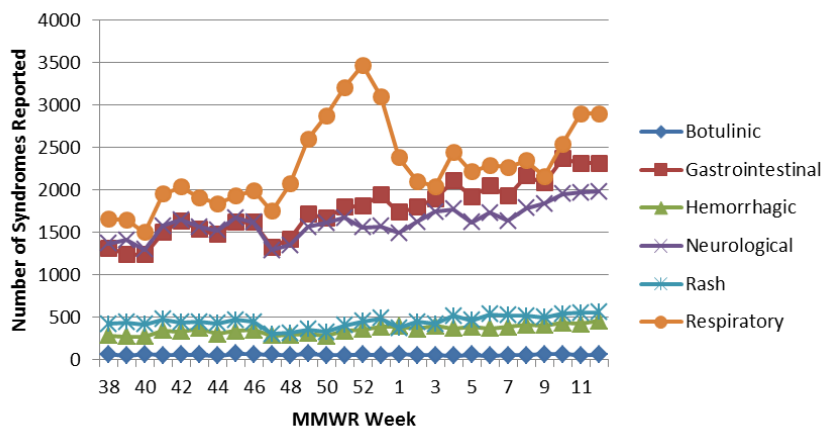
- Cases peaked on Monday, March 23rd, 2015
- Cases decreased by 0.10% compared to last week (↓)
- Cases increased by 49.25% compared to last year⁵ (↑)
- Overall cases have been trending downward (↓1 week)

Gastrointestinal syndromes represented the second largest number of cases for the week

- Cases peaked on Monday, March 23rd, 2015
- Cases decreased by 0.09% compared to last week (↓)
- Cases increased by 21.06% compared to last year (↑)
- Overall cases have been trending downward (↓1 week)

Botulinic syndromes represented the largest percentage weekly increase among all syndromes reported at 9.09%

Figure 1: Syndromes by MMWR Week for Cuyahoga County Weeks 38 to Week 12 2014-2015



Infectious Disease Symptoms Indicators

Fever symptoms represented the largest number of cases for the week

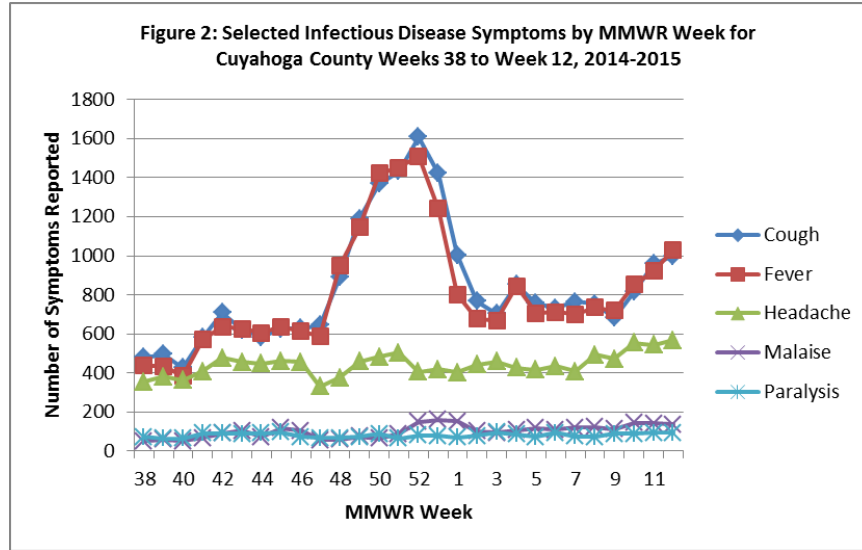
- Cases peaked on Monday, March 23rd, 2015
- Cases increased by 11.93% compared to last week (↑)
- Cases increased by 76.41% compared to last year⁵ (↑)
- Overall cases have been trending upward (↑1 week)

Cough symptoms represented the second largest number of cases for the week

- Cases peaked on Monday, March 23rd, 2015
- Cases increased by 4.28% compared to last week (↑)
- Cases increased by 84.84% compared to last year⁵ (↑)
- Overall cases have been trending upward (↑1 week)

HINT Report

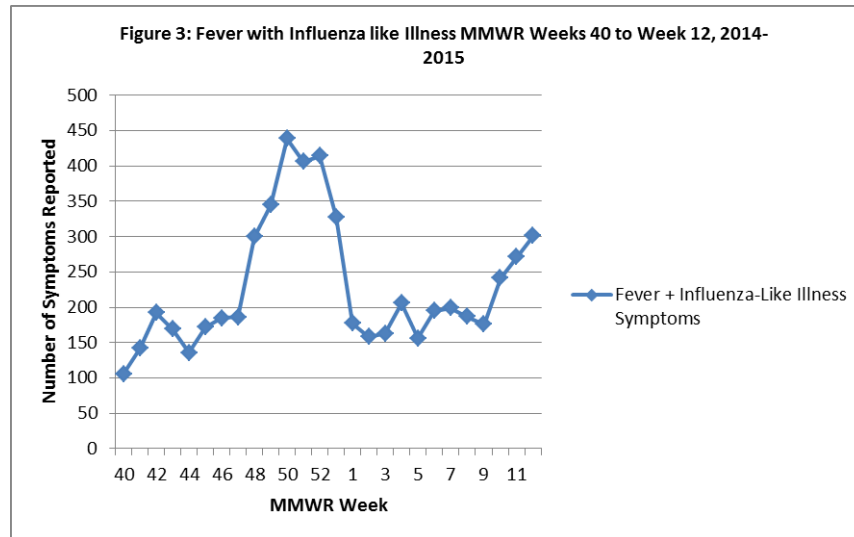
Fever symptoms represented the largest weekly increase among all symptoms reported at **11.93%**



Influenza Indicators

Fever + Influenza like Illnesses reported for this week:

- Cases peaked on Monday, March 23rd, 2015
- Cases increased by 11.07% compared to last week (↑)
- Cases increased by 140.80% compared to last year (↑)
- Overall cases have been trending upward (↑1 week)



¹Source: Ohio EpiCenter and the Ohio Disease Reporting System (ODRS)

²Key indicators are select illness classifications among Cuyahoga County residents who visited the hospital. The data are reported in real-time. Residents can be classified into more than one illness classification. Data has been conditioned for day-of-week effect.

³MMWR Week Fact Sheet: http://wwwn.cdc.gov/nndss/document/MMWR_Week_overview.pdf

⁴2014 and 2015 MMWR Weeks: <http://www.clevelandhealth.org/Health/CommunicableDisease/Statistics.html> ⁵

Comparison based upon 2014-2015 MMWR Week 12 and EpiCenter data from September 2014 through March 2015

⁶Source: Real-time Outbreak and Disease Surveillance (RODS)