

HINT Report

Weekly Disease Surveillance Report

KEY INDICATORS^{1,2} | MMWR WEEK 19^{3,4} | 5/10/15 TO 5/16/15

Syndromic Indicators

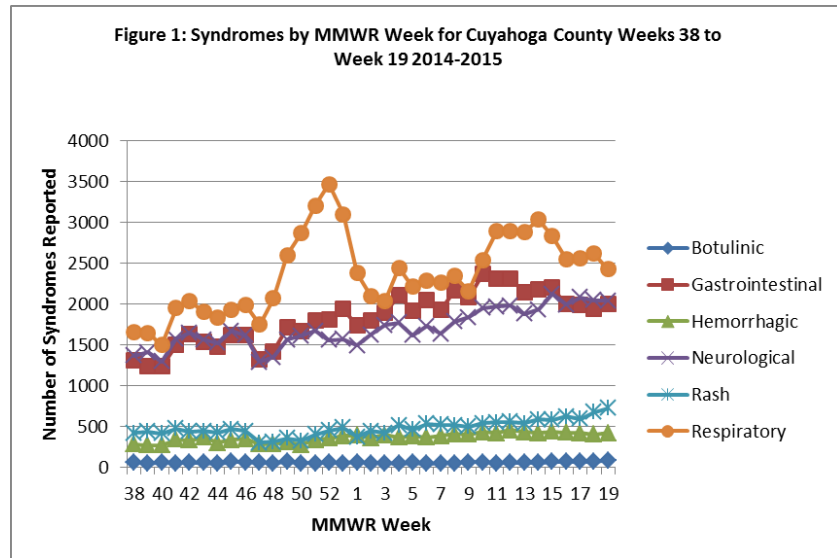
Respiratory syndromes represented the largest number of cases for the week

- Cases peaked on Monday, May 11th, 2015
- Cases decreased by 7.15% compared to last week (↓)
- Cases increased by 13.56% compared to last year⁵ (↑)
- Overall cases have been trending downward (↓1 week)

Neurological syndromes represented the second largest number of cases for the week

- Cases peaked on Monday, May 11th, 2015
- Cases decreased by 0.24% compared to last week (↓)
- Cases increased by 16.70% compared to last year (↑)
- Overall cases have been trending downward (↓1 week)

Botulinic syndromes represented the largest percentage weekly increase among all syndromes reported at 26.39%



Infectious Disease Symptoms Indicators

Fever symptoms represented the largest number of cases for the week

- Cases peaked on Monday, May 11th, 2015
- Cases decreased by 19.43% compared to last week (↓)
- Cases increased by 19.42% compared to last year⁵ (↑)
- Overall cases have been trending downward (↓1 week)

Cough symptoms represented the second largest number of cases for the week

- Cases peaked on Monday, May 11th, 2015
- Cases decreased by 13.82% compared to last week (↓)
- Cases increased by 15.20% compared to last year⁵ (↑)
- Overall cases have been trending downward (↓1 week)

Department of Public Health

Office of Communicable Disease
Surveillance and Epidemiology

75 Erievue Plaza, 3rd Flr

Cleveland, Ohio 44114

Office: 216/664-3747

Fax: 216/664-6159

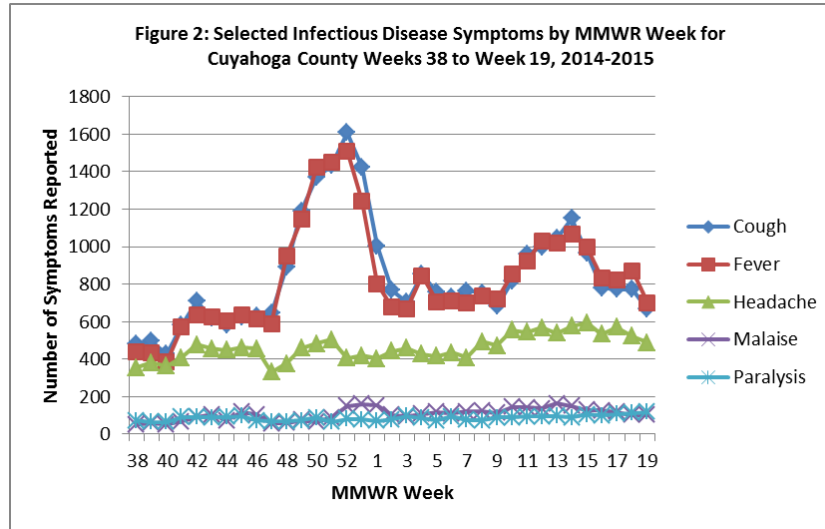
www.clevelandhealth.org



Disease Surveillance Report for
MMWR Week 19

HINT Report

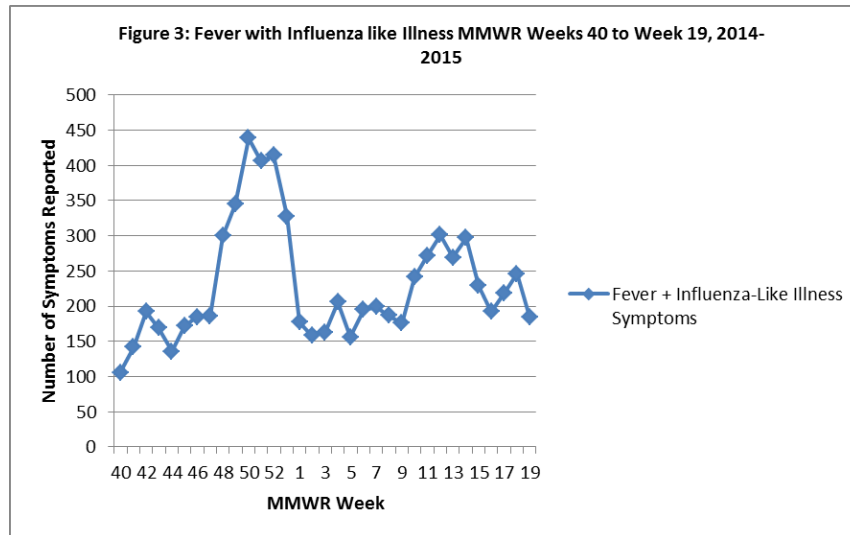
Fever symptoms represented the largest weekly decrease among all symptoms reported at 19.43%



Influenza Indicators

Fever + Influenza like Illnesses reported for this week:

- Cases peaked on Sunday, May 10th, 2015
- Cases decreased by 24.80% compared to last week(↓)
- Cases increased by 40.15% compared to last year (↑)
- Overall cases have been trending downward (↓1 week)



¹Source: Ohio EpiCenter and the Ohio Disease Reporting System (ODRS)

²Key indicators are select illness classifications among Cuyahoga County residents who visited the hospital. The data are reported in real-time. Residents can be classified into more than one illness classification. Data has been conditioned for day-of-week effect.

³MMWR Week Fact Sheet: http://www.cdc.gov/nndss/document/MMWR_Week_overview.pdf

⁴2014 and 2015 MMWR Weeks: <http://www.clevelandhealth.org/Health/CommunicableDisease/Statistics.html> ⁵

Comparison based upon 2014-2015 MMWR Week 19 and EpiCenter data from September 2014 through May 2015

⁶Source: Real-time Outbreak and Disease Surveillance (RODS)