

# HINT Report

## Weekly Disease Surveillance Report

KEY INDICATORS<sup>1,2</sup>|MMWR WEEK 20<sup>3,4</sup>|5/17/15 TO 5/23/15

### Syndromic Indicators

Respiratory syndromes represented the largest number of cases for the week

- Cases peaked on Monday, May 18<sup>th</sup>, 2015
- Cases decreased by 0.16% compared to last week (↓)
- Cases increased by 6.92% compared to last year<sup>5</sup> (↑)
- Overall cases have been trending downward (↓1 week)

Neurological syndromes represented the second largest number of cases for the week

- Cases peaked on Monday, May 18<sup>th</sup>, 2015
- Cases increased by 0.25% compared to last week (↑)
- Cases increased by 11.25% compared to last year (↑)
- Overall cases have been trending upward (↑1 week)

Botulinic syndromes represented the largest percentage weekly decrease among all syndromes reported at 8.79%

### Department of Public Health

Office of Communicable Disease  
Surveillance and Epidemiology

75 Erievue Plaza, 3rd Flr

Cleveland, Ohio 44114

Office: 216/664-3747

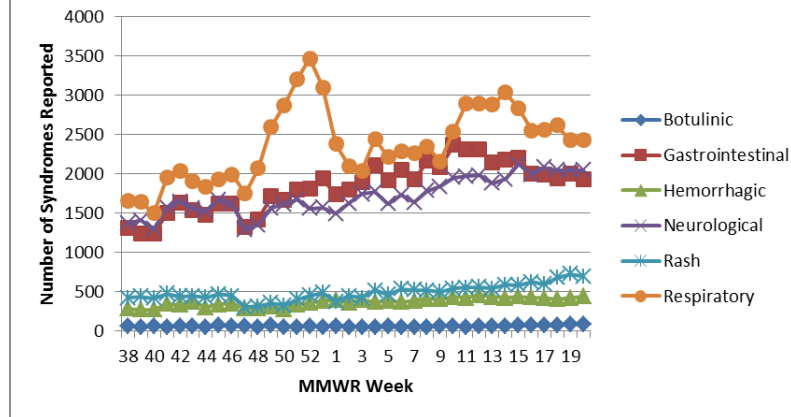
Fax: 216/664-6159

www.clevelandhealth.org



Disease Surveillance Report for  
MMWR Week 20

Figure 1: Syndromes by MMWR Week for Cuyahoga County Weeks 38 to Week 20 2014-2015



### Infectious Disease Symptoms Indicators

Fever symptoms represented the largest number of cases for the week

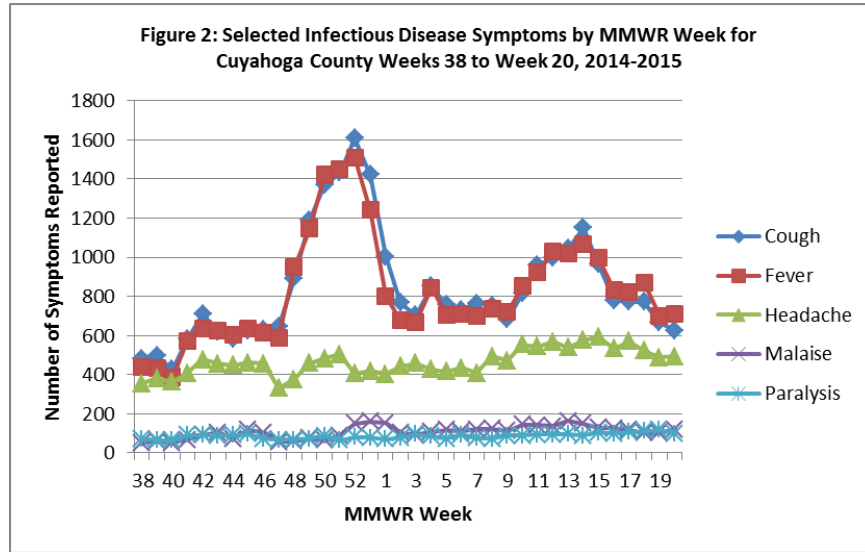
- Cases peaked on Monday, May 18<sup>th</sup>, 2015
- Cases increased by 1.28% compared to last week (↑)
- Cases increased by 5.81% compared to last year<sup>5</sup> (↑)
- Overall cases have been trending upward (↑1 week)

Cough symptoms represented the second largest number of cases for the week

- Cases peaked on Monday, May 18<sup>th</sup>, 2015
- Cases decreased by 6.15% compared to last week (↓)
- Cases decreased by 5.72% compared to last year<sup>5</sup> (↓)
- Overall cases have been trending downward (↓1 week)

# HINT Report

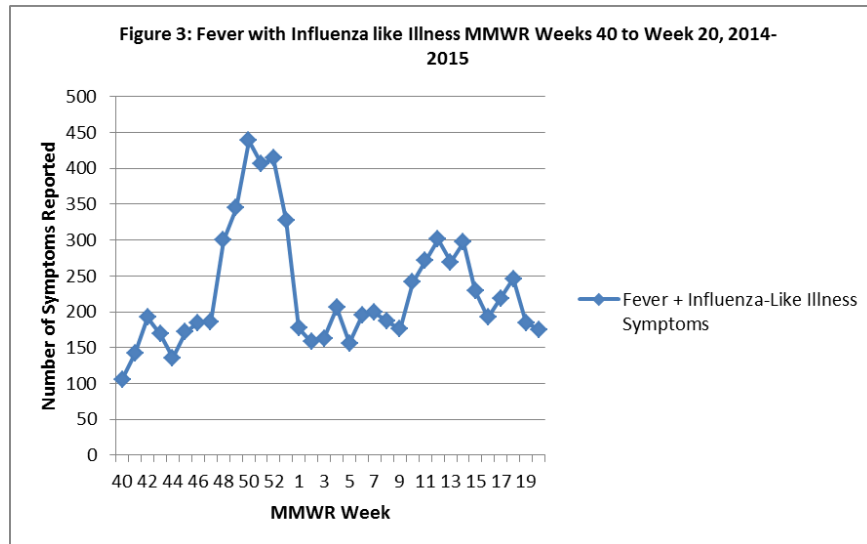
Paralysis symptoms represented the largest weekly decrease among all symptoms reported at 14.53%



## Influenza Indicators

Fever + Influenza like Illnesses reported for this week:

- Cases peaked on Monday, May 18<sup>th</sup>, 2015
- Cases decreased by 5.41% compared to last week(↓)
- Cases stayed the same (0% change) compared to last year (=)
- Overall cases have been trending downward (↓1 week)



<sup>1</sup>Source: Ohio EpiCenter and the Ohio Disease Reporting System (ODRS)

<sup>2</sup>Key indicators are select illness classifications among Cuyahoga County residents who visited the hospital. The data are reported in real-time. Residents can be classified into more than one illness classification. Data has been conditioned for day-of-week effect.

<sup>3</sup>MMWR Week Fact Sheet: [http://www.cdc.gov/nndss/document/MMWR\\_Week\\_overview.pdf](http://www.cdc.gov/nndss/document/MMWR_Week_overview.pdf)

<sup>4</sup>2014 and 2015 MMWR Weeks: <http://www.clevelandhealth.org/Health/CommunicableDisease/Statistics.html> <sup>5</sup>

Comparison based upon 2014-2015 MMWR Week 20 and EpiCenter data from September 2014 through May 2015

<sup>6</sup>Source: Real-time Outbreak and Disease Surveillance (RODS)