

HINT Report

Weekly Disease Surveillance Report

KEY INDICATORS^{1,2} | MMWR WEEK 31^{3,4} | 8/2/15 TO 8/8/15

Syndromic Indicators

Neurological syndromes represented the largest number of cases for the week

- Cases peaked on Monday, August, 3rd, 2015
- Cases decreased by 4.92% compared to last week (↓)
- Cases increased by 8.30% compared to last year⁵ (↑)
- Overall cases have been trending downward (↓1 week)

Gastrointestinal syndromes represented the second largest number of cases for the week

- Cases peaked on Monday, August 3rd, 2015
- Cases increased by 1.56% compared to last week (↑)
- Cases increased by 6.85% compared to last year (↑)
- Overall cases have been trending upward (↑1 week)

Rash syndromes represented the largest percentage weekly decrease among all syndromes reported at 10.31%

Department of Public Health

Office of Communicable Disease
Surveillance and Epidemiology

75 Erievue Plaza, 3rd Flr

Cleveland, Ohio 44114

Office: 216/664-3747

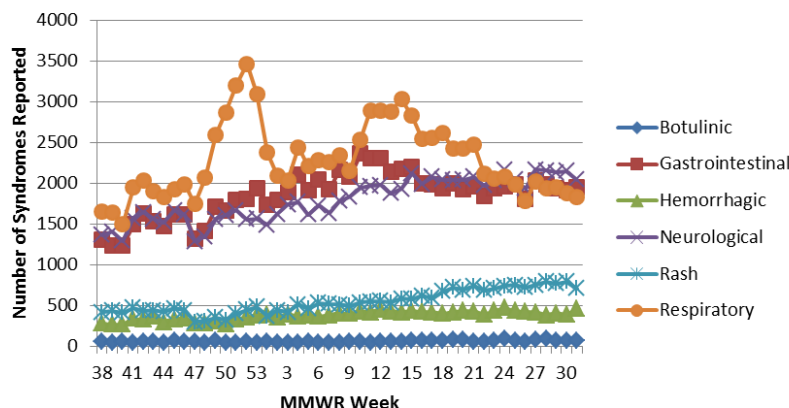
Fax: 216/664-6159

www.clevelandhealth.org



Disease Surveillance Report for
MMWR Week 31

Figure 1: Syndromes by MMWR Week for Cuyahoga County Weeks 38 to Week 31 2014-2015



Infectious Disease Symptoms Indicators

Fever symptoms represented the largest number of cases for the week

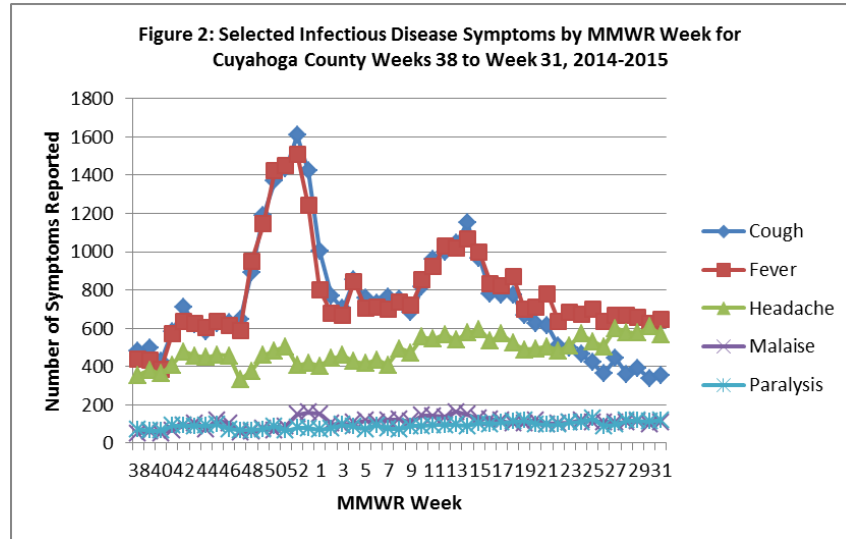
- Cases peaked on Sunday, August 2nd, 2015
- Cases increased by 3.51% compared to last week (↑)
- Cases increased by 8.89% compared to last year (↑)
- Overall cases have been trending upward (↑1 week)

Headache symptoms represented the second largest number of cases for the week

- Cases peaked on Tuesday, August 4th, 2015
- Cases decreased by 6.57% compared to last week (↓)
- Cases increased by 13.35% compared to last year (↑)
- Overall cases have been trending upward (↑1 week)

HINT Report

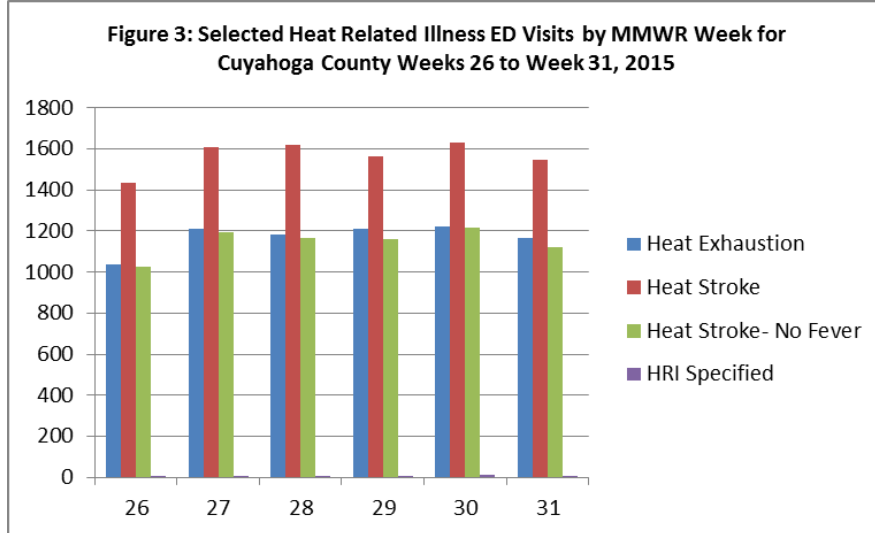
Headache symptoms represented the largest weekly decrease among all symptoms reported at 6.57%



Heat Related Illness Indicators

Heat Stroke represented the largest number of cases for the week:

- Cases peaked on Tuesday, August 4th, 2015
- Cases decreased by 5.21% compared to last week (↓)
- Cases increased by 10.51% compared to last year (↑)
- Overall cases have been trending downward (↓ 1 week)



¹Source: Ohio EpiCenter and the Ohio Disease Reporting System (ODRS)

²Key indicators are select illness classifications among Cuyahoga County residents who visited the hospital. The data are reported in real-time. Residents can be classified into more than one illness classification. Data has been conditioned for day-of-week effect.

³MMWR Week Fact Sheet: http://www.cdc.gov/nndss/document/MMWR_Week_overview.pdf

⁴2014 and 2015 MMWR Weeks: <http://www.clevelandhealth.org/Health/CommunicableDisease/Statistics.html> ⁵

Comparison based upon 2014-2015 MMWR Week 31 and EpiCenter data from September 2014 through August 2015

⁶Source: Real-time Outbreak and Disease Surveillance (RODS)