

# HINT Report

## Weekly Disease Surveillance Report

KEY INDICATORS<sup>1,2</sup>|MMWR WEEK 39<sup>3,4</sup>|9/27/15 TO 10/03/15

### Syndromic Indicators

Respiratory syndromes represented the largest number of cases for the week

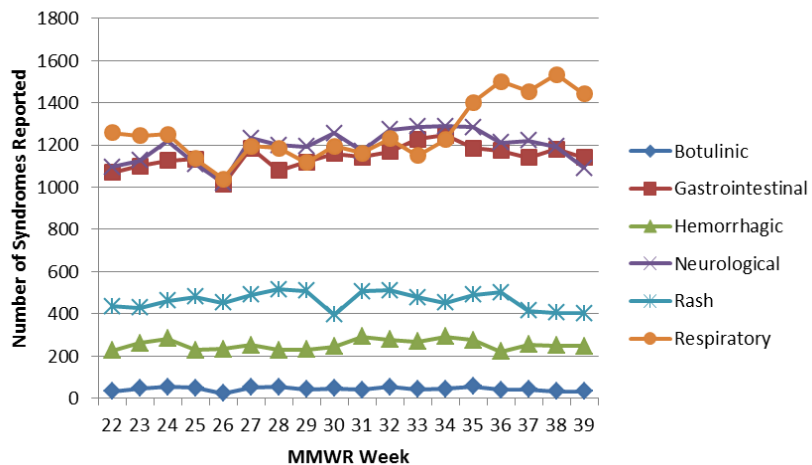
- Cases peaked on Thursday, October 1<sup>st</sup>, 2015
- Cases decreased by 6.00% compared to last week (↓)
- Cases increased by 12.05% compared to last year<sup>5</sup> (↑)
- Overall cases have been trending downward (↓1 week)

Gastrointestinal syndromes represented the second largest number of cases for the week

- Cases peaked on Thursday, October 1<sup>st</sup>, 2015
- Cases decreased by 3.39% compared to last week (↓)
- Cases increased by 22.16% compared to last year (↑)
- Overall cases have been trending downward (↓1 week)

Neurological syndromes represented the largest percentage weekly decrease among all syndromes reported at 8.55%

Figure 1: Syndromes by MMWR Week for the City of Cleveland Weeks 22 to Week 39, 2015



### Infectious Disease Symptoms Indicators

Cough symptoms represented the largest number of cases for the week

- Cases peaked on Sunday, September 27<sup>th</sup>, 2015
- Cases decreased by 4.39% compared to last week (↓)
- Cases increased by 20.26% compared to last year (↑)
- Overall cases have been trending downward (↓1 week)

Fever symptoms represented the second largest number of cases for the week

- Cases peaked on Tuesday, September 29<sup>th</sup>, 2015
- Cases decreased by 2.11% compared to last week (↓)
- Cases increased by 18.47% compared to last year (↑)
- Overall cases have been trending downward (↓1 week)

### Department of Public Health

Office of Communicable Disease  
Surveillance and Epidemiology

75 Erievue Plaza, 3rd Flr

Cleveland, Ohio 44114

Office: 216/664-3747

Fax: 216/664-6159

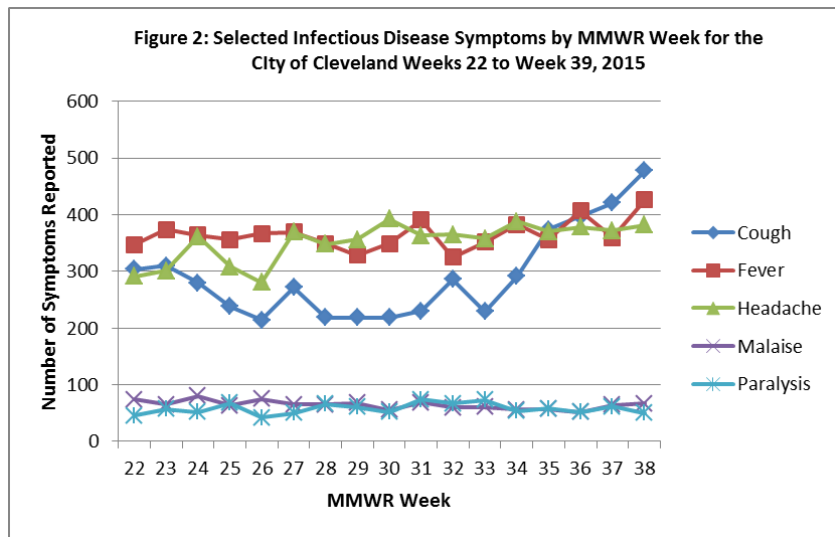
[www.clevelandhealth.org](http://www.clevelandhealth.org)



Disease Surveillance Report for  
MMWR Week 39

# HINT Report

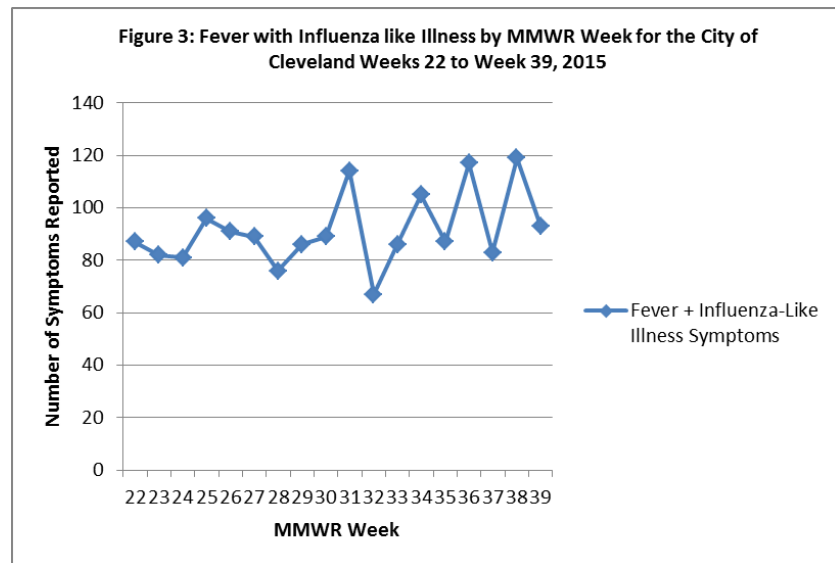
Paralysis symptoms represented the largest weekly increase among all symptoms reported at 22.00%



## Influenza Indicators

Fever + Influenza like Illness represented the largest number of cases for the week:

- Cases peaked on Monday, September 28<sup>th</sup>, 2015
- Cases decreased by 21.85% compared to last week (↓)
- Cases increased by 8.14% compared to last year (↑)
- Overall cases have been trending downward (↓ 1 week)



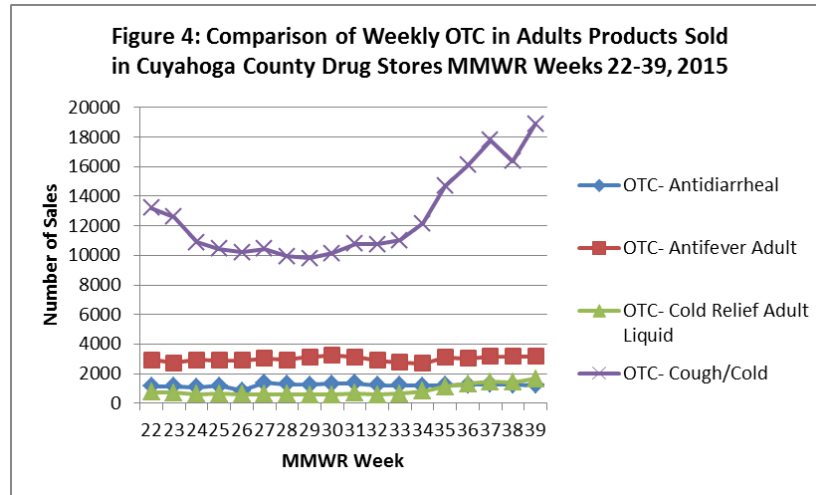
## Over-the-Counter (OTC) Medication Sales for Adults (Cuyahoga County)

Cough/Cold medication represented the largest number of sales for the week:

- Sales peaked on Saturday, October 3<sup>rd</sup>, 2015
- Sales increased by 15.45% compared to last week (↑)
- Sales decreased by 13.25% compared to last year (↓)
- Overall sales have been trending upward (↑ 1 week)

# HINT Report

Cold Relief Adult Liquid medications represented the largest weekly increase among all OTC adult medications at **15.69%**

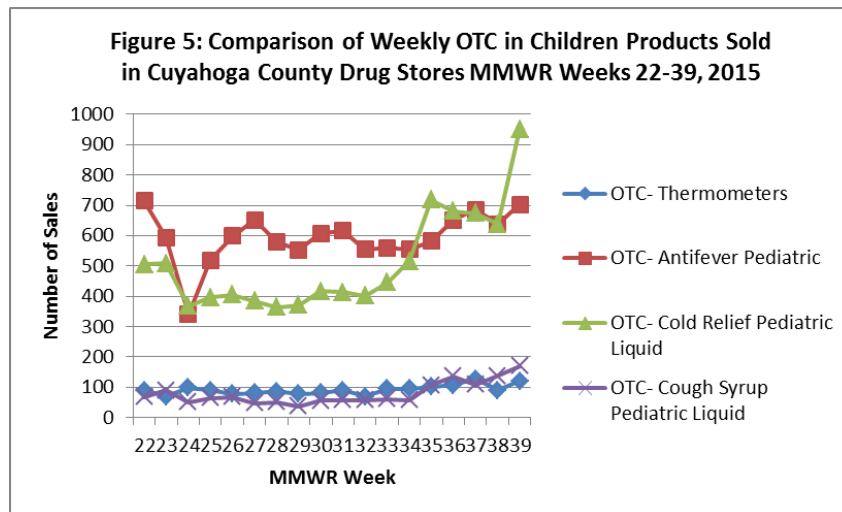


## **Over-the-Counter (OTC) Medication Sales for Children (Cuyahoga County)**

Cold Relief Pediatric Liquid medication represented the largest number of sales for the week:

- Sales peaked on Saturday, October 3<sup>rd</sup>, 2015
- Sales increased by 49.06% compared to last week (↑)
- Sales decreased by 11.62% compared to last year (↓)
- Overall sales have been trending upward (↑1 week)

Cold Relief Pediatric Liquid sales represented the largest weekly increase among all OTC children medications at **49.06%**



<sup>1</sup>Source: Ohio EpiCenter, the Ohio Disease Reporting System (ODRS) and the National Retail Data Monitor (NRDM RODS)

<sup>2</sup>Key indicators are select illness classifications among Cleveland residents who visited the hospital and Cuyahoga County resident's medication sales. The data are reported in real-time. Residents can be classified into more than one illness classification. Data has been conditioned for day-of-week effect.

<sup>3</sup>MMWR Week Fact Sheet: [http://wwwn.cdc.gov/nndss/document/MMWR\\_Week\\_overview.pdf](http://wwwn.cdc.gov/nndss/document/MMWR_Week_overview.pdf)

<sup>4</sup>2015 MMWR Weeks: <http://www.clevelandhealth.org/Health/CommunicableDisease/Statistics.html> <sup>5</sup>

Comparison based upon 2015 MMWR Week 39 and EpiCenter and NRDM RODs data from July 2015 through October 2015

<sup>6</sup>Source: Real-time Outbreak and Disease Surveillance (RODS)