

HOW DO I REPORT A DISEASE?

Contact Central Reporting at:

Phone: (216) 201-2080

Fax: (216) 676-1316



Useful Links:

Ohio Department of Health, Infectious Disease Control Manual
<http://www.odh.ohio.gov/pdf/IDCM/intro1.pdf>

Cleveland Department of Public Health, Disease Reporting
http://www.clevelandhealth.org/network/health/disease_reporting.php

2014 National Notifiable Infectious Conditions
<http://wwwn.cdc.gov/NNDSS/script/ConditionList.aspx?Type=0&Yr=2014>

The City of Cleveland Mission Statement

We are committed to improving the quality of life in the City of Cleveland by strengthening our citizens and making Cleveland a desirable, safe city in which to live, work, raise a family, shop, study, play and grow.

For General Inquiries Contact:



75 Erieview Plaza
Cleveland, OH 44114-1839

Phone: (216) 664-3747
After Hours: (216) 857-7473
Fax: (216) 664-6159

Office Hours: Monday-Friday, 8am-5pm

www.clevelandhealth.org



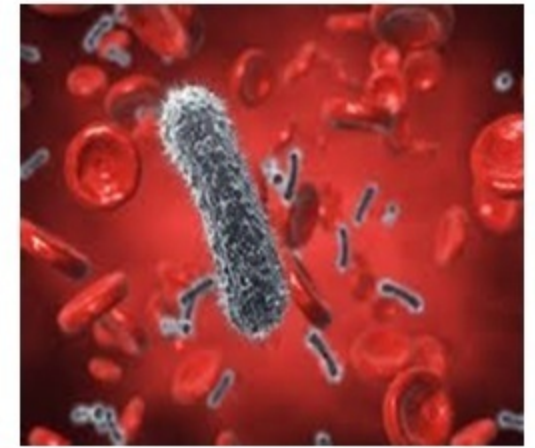
Public Health
Prevent. Promote. Protect.



Know your

ABCs:

A Quick Guide to
Disease Reporting



Office of Communicable
Disease Surveillance &
Epidemiology

www.clevelandhealth.org

WHAT IS DISEASE REPORTING?

This is when physicians and other health care providers report diseases of public health concern (communicable/infectious diseases) to the local public health department. The Ohio Administrative Code (3701-3-02 & 3701-3-03) mandates disease reporting to the local health department.

WHAT ARE REPORTABLE DISEASES?

Infectious and communicable diseases caused by:

- Bacteria
- Viruses
- Parasites
- Fungi
- Toxin

WHY REPORT?

- To prevent the spread of communicable disease
- To protect the health of the public
- To determine the level of illness in the community
- To evaluate risk of disease transmissions
- To intervene immediately and control the spread of disease

TIME PERIOD FOR REPORTING?

Class A: report immediately by phone upon recognition that a case, suspected case, or positive laboratory result.

Class B: report by the end of the next business day after the existence of a case, a suspected case, or a positive laboratory result is known.

Class C: report an outbreak, unusual incidence, or epidemic by the end of the next business day.

The ABCs of Disease Reporting

KNOW YOUR ABCs QUICK GUIDE

From the Ohio Administrative Code Chapter 3701-3; Effective January 1, 2014

Class A

- Anthrax
- Botulism, foodborne
- Cholera
- Diphtheria
- Influenza A – novel virus
- Measles
- Meningococcal disease
- Plague
- Rabies, human
- Rubella (not congenital)
- Severe acute respiratory syndrome (SARS)
- Smallpox
- Tularemia
- Viral hemorrhagic fever (VHF)
- Yellow fever

Class B

- Amebiasis
- Arboviral neuroinvasive and non-neuroinvasive disease:
 - Eastern equine encephalitis virus disease
 - LaCrosse virus disease (other)
 - California serogroup virus disease
 - Powassan virus disease
 - St. Louis encephalitis virus disease
 - West Nile virus infection
 - Western equine encephalitis virus disease
 - Other arthropod-borne diseases
- Babesiosis
- Botulism, infant
- Botulism, wound
- Brucellosis
- Campylobacteriosis
- Chancroid
- Chlamydia trachomatis infections

Class B

- Coccidioidomycosis
- Creutzfeldt-Jakob disease (CJD)
- Cryptosporidiosis
- Cyclosporiasis
- Dengue
- *E. coli* O157:H7 and Shiga toxin-producing (STEC) *E. coli*
- Ehrlichiosis/anaplasmosis
- Giardiasis
- Gonorrhea (*Neisseria gonorrhoeae*)
- *Haemophilus influenzae* (invasive disease)
- Hantavirus
- Hemolytic uremic syndrome (HUS)
- Hepatitis A
- Hepatitis B, non-perinatal, perinatal
- Hepatitis C
- Hepatitis D (delta hepatitis)
- Hepatitis E
- Influenza-associated hospitalization
- Influenza-associated pediatric mortality
- Legionnaires' disease
- Leprosy (Hansen disease)
- Leptospirosis
- Listeriosis
- Lyme disease
- Malaria
- Meningitis:
 - Aseptic (viral), Bacterial
- Mumps
- Mycobacterial disease, other than tuberculosis (MOTT)
- Pertussis
- Poliomyelitis (including vaccine-associated cases)
- Psittacosis
- Q fever

Class B

- Rubella (congenital)
- Salmonellosis
- Shigellosis
- Spotted Fever Rickettsiosis, including Rocky Mountain spotted fever
- *Staphylococcus aureus*, with resistance or intermediate resistance to vancomycin (VRSA, VISA)
- Streptococcal disease, group A, invasive (IGAS)
- Streptococcal disease, group B, in newborn
- Streptococcal toxic shock syndrome (STSS)
- *Streptococcus pneumoniae*, invasive disease (ISP)
- Syphilis
- Tetanus
- Toxic shock syndrome (TSS)
- Trichinellosis
- Tuberculosis, including multi-drug resistant tuberculosis (MDR-TB)
- Typhoid fever
- Typhus fever
- Varicella
- Vibriosis
- Yersiniosis

Class C

- Community
- Foodborne
- Healthcare-associated
- Institutional
- Waterborne
- Zoonotic