

Current Season Summary:

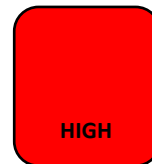
December 22 – December 28, 2019
MMWR Week 52

This week, there were 285 emergency department visits for influenza-like illnesses out of 6,887 total visits to emergency departments, which is the highest proportion of visits seen in the past 5 years; there were at least 46 confirmed hospitalizations for influenza this week bringing the seasonal total to 101; and, there were 2 pneumonia- or influenza-related deaths out of 172 total deaths this week. Two of the three indicators, influenza-like illnesses and confirmed hospitalizations were well above the 5-year average

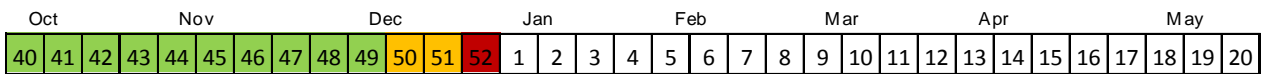
Influenza B is the predominant strain circulating this season. Affected populations are *substantially* younger than in the previous 5 seasons.

Flu Intensity This Week

Flu activity this week is Very High



Seasonal Flu Intensity

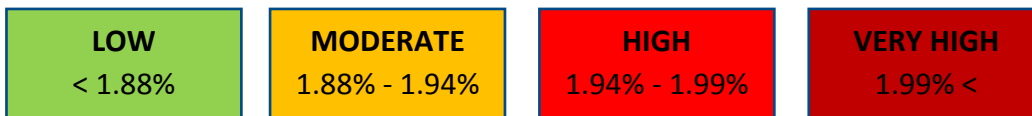
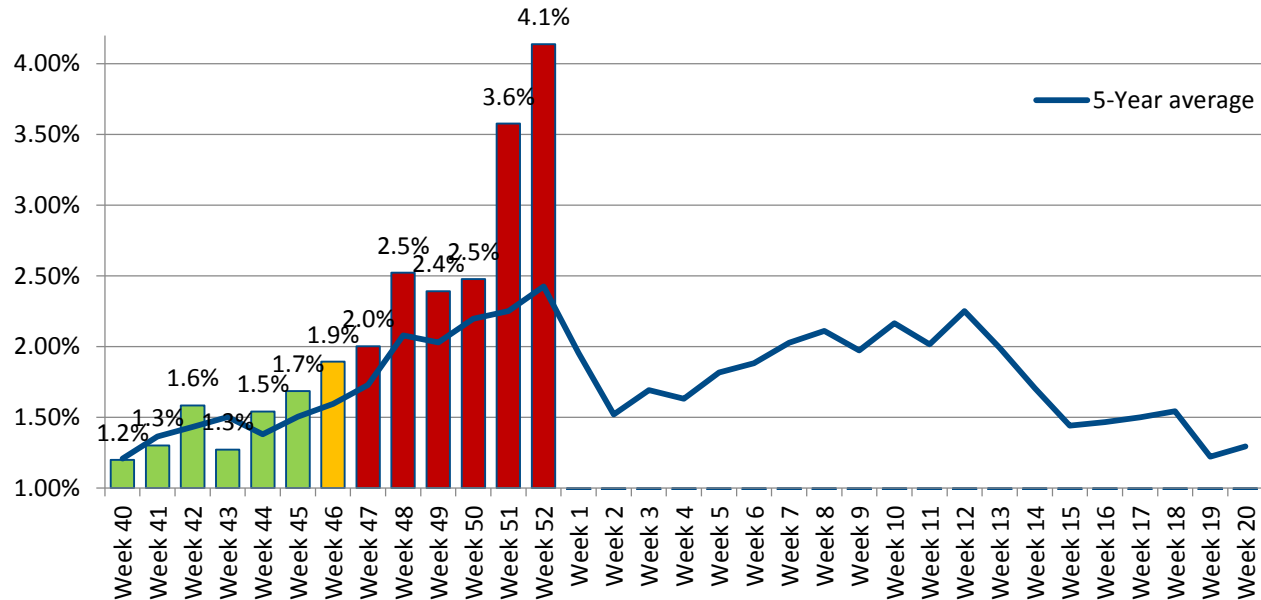


Flu Intensity Indicators	This Week n (%)	Season Total n (%)
Emergency Department Visits for Influenza-Like Illnesses	285 (4.14%)	1,752 (2.15%)
Confirmed Influenza Hospitalizations	46	101
Pneumonia- & Influenza-Related Deaths*	2 (1.2%)	157 (4.3%)

*Deaths represent all deaths for Cuyahoga County. All other data presented are City of Cleveland-specific
The three indicators for calculating the intensity threshold are based [on 2017 methodology from the Centers for Disease Control and Prevention.](#)

Influenza-Like Illnesses

Figure 1: 2019-2020 Proportion of Emergency Department Visits for Influenza-Like Illnesses



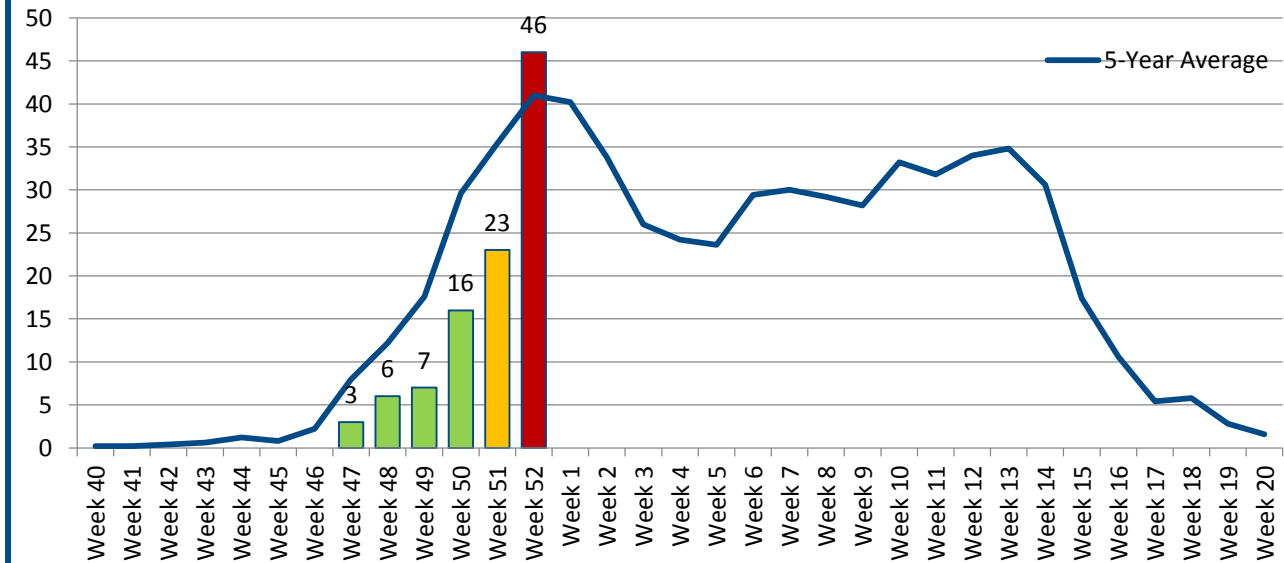
The proportion of Emergency Room visits for influenza-like illnesses remains elevated beyond what has been observed in 5 years. This week 50% of visits were among males. Regarding race and ethnicity, 34% of visits were Black or African American individuals; 16% were among White or Caucasian individuals; and more than a third (35%) of visits were among other racial groups. About one third (30%) of visits were among Hispanic or Latino individuals. The median age was 6 years of age.

Data Source: Health Monitoring Systems: EpiCenter 3.5.17. Data extracted on 12/30/2019.

Low, Moderate, and High intensity thresholds are defined as the 50%, 90%, and 99% Confidence Intervals, respectively, based on the 5-Year Average of previous seasons

Hospitalizations

Figure 2. 2019-2020 Confirmed Influenza-Associated Hospitalizations



LOW
< 22.71

MODERATE
22.71 – 25.05

HIGH
25.05 – 27.29

VERY HIGH
27.29 <

This season there have been at least 101 confirmed hospitalizations. The majority (73%) of these are Influenza B-related with 4 cases being the Victoria strain. One case tested positive for both Influenza A and Influenza B strains. Most cases (64%) occurred among Black or African Americans and 23% were among White or Caucasian populations. A little more than half (55%) of all hospitalizations were females.

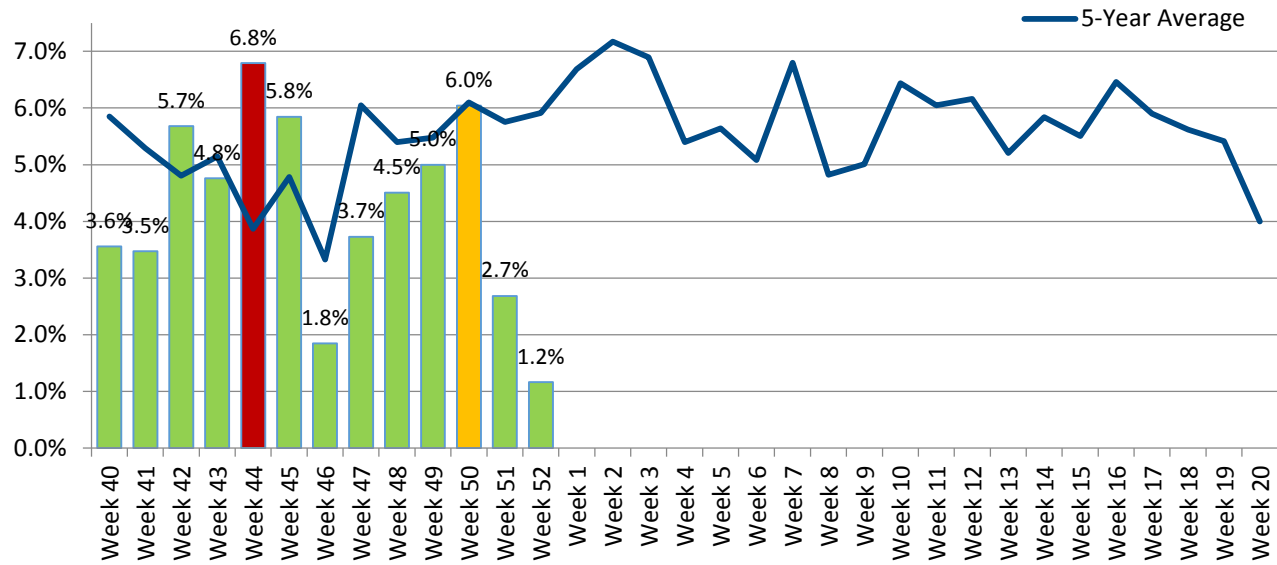
Younger populations appear to be affected most this flu seasons. It is important to note that younger populations are less likely to be hospitalized in general but, among those hospitalized, the median age of cases this season is 36 years which is substantially younger than the 5-year median age of 60 years.

Data Source: Ohio Department of Health: Ohio Disease Reporting System. Data extracted on 1/2/2019. Data are preliminary and subject to change as more information is gained.

Low, Moderate, and High intensity thresholds are defined as the 50%, 90%, and 99% Confidence Intervals, respectively, based on the 5-Year Average of previous seasons

Pneumonia- & Influenza-Associated Deaths*

Figure 3. Proportion of Deaths Associated with Pneumonia or Influenza



LOW < 6.02%	MODERATE 6.02% - 6.19%	HIGH 6.19% - 6.34%	VERY HIGH 6.34%<
-----------------------	----------------------------------	------------------------------	----------------------------

The proportion of deaths due to pneumonia or influenza-related (P&I) illnesses is within the *low* threshold this week. Of all P&I deaths that have occurred this season, all are associated with pneumonia and not influenza. All deaths this week occurred among individuals aged 45 years and older. Almost all P&I deaths that occurred this week were among individuals aged 45 years and older. To-date, only 3 P&I deaths have occurred among younger age groups.

Data Source: Cleveland Department of Public Health Department of Vital Statistics. Data compiled on 12/30/2019.

*Deaths represent all deaths for Cuyahoga County. All other data presented are City of Cleveland-specific

Low, Moderate, and High intensity thresholds are defined as the 50%, 90%, and 99% Confidence Intervals, respectively, based on the 5-Year Average of previous seasons