

Current Season Summary:

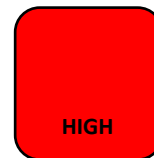
March 22 – March 28, 2020
MMWR Week 13

This week, there were 119 emergency department visits for influenza-like illnesses out of 4,056 total emergency departments visits for any cause; there were 5 confirmed hospitalizations for influenza this week bringing the seasonal total to 1004[‡]; and, there were 15 pneumonia- or influenza-related deaths out of 253 total deaths* for any cause. There were no new influenza outbreaks reported in Week 13 keeping the total number of outbreaks at 8.

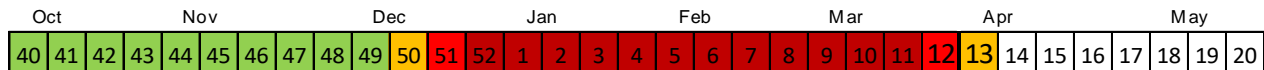
Influenza A is the predominant strain noted this week. Over the course of this season among those with known vaccination status, 77% of those with Influenza A were not vaccinated and 60% of those with Influenza B were not vaccinated. The CDC reports that this vaccine is a good match for the current circulating strain of Influenza A (H1N1 lineage).

Flu Intensity This Week

For the seventh week in a row, flu activity remains *Moderate*



Seasonal Flu Intensity



| Flu Intensity Indicators | This Week n (%) | Season Total n (%) |
|---|--------------------|-----------------------|
| Emergency Department Visits for Influenza-Like Illnesses | 119 (2.93%) | 4144 (2.53%) |
| Confirmed Influenza Hospitalizations[‡] | 5 | 1004 |
| Pneumonia- & Influenza-Related Deaths* | 15 (5.9%) | 384 (5.1%) |

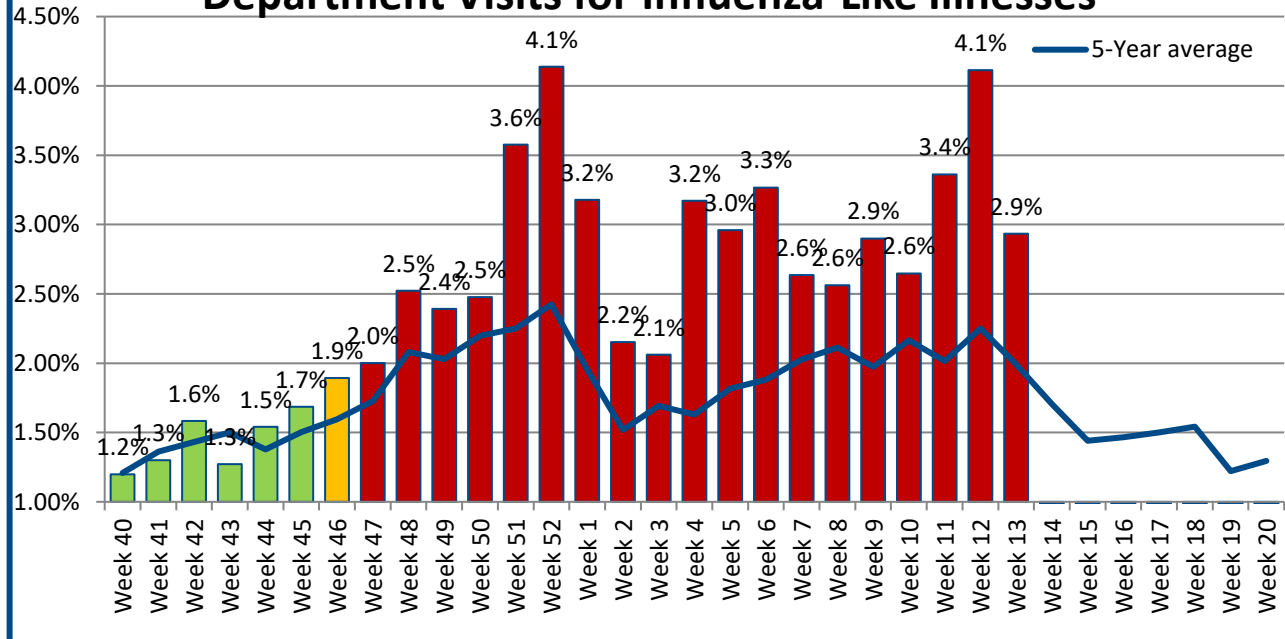
[‡] Due to the large number of hospitalizations and delays in reporting, methodology was updated in Week 1 to include cases that are still open but confirmed.

*Deaths represent all deaths for Cuyahoga County. All other data presented are City of Cleveland-specific. Data are preliminary and subject to change as more information is gained.

The three indicators for calculating the intensity thresholds are based [on 2017 methodology from the Centers for Disease Control and Prevention.](#)

Influenza-Like Illnesses

Figure 1: 2019-2020 Proportion of Emergency Department Visits for Influenza-Like Illnesses



LOW
< 1.88%

MODERATE
1.88% - 1.94%

HIGH
1.94% - 1.99%

VERY HIGH
1.99% <

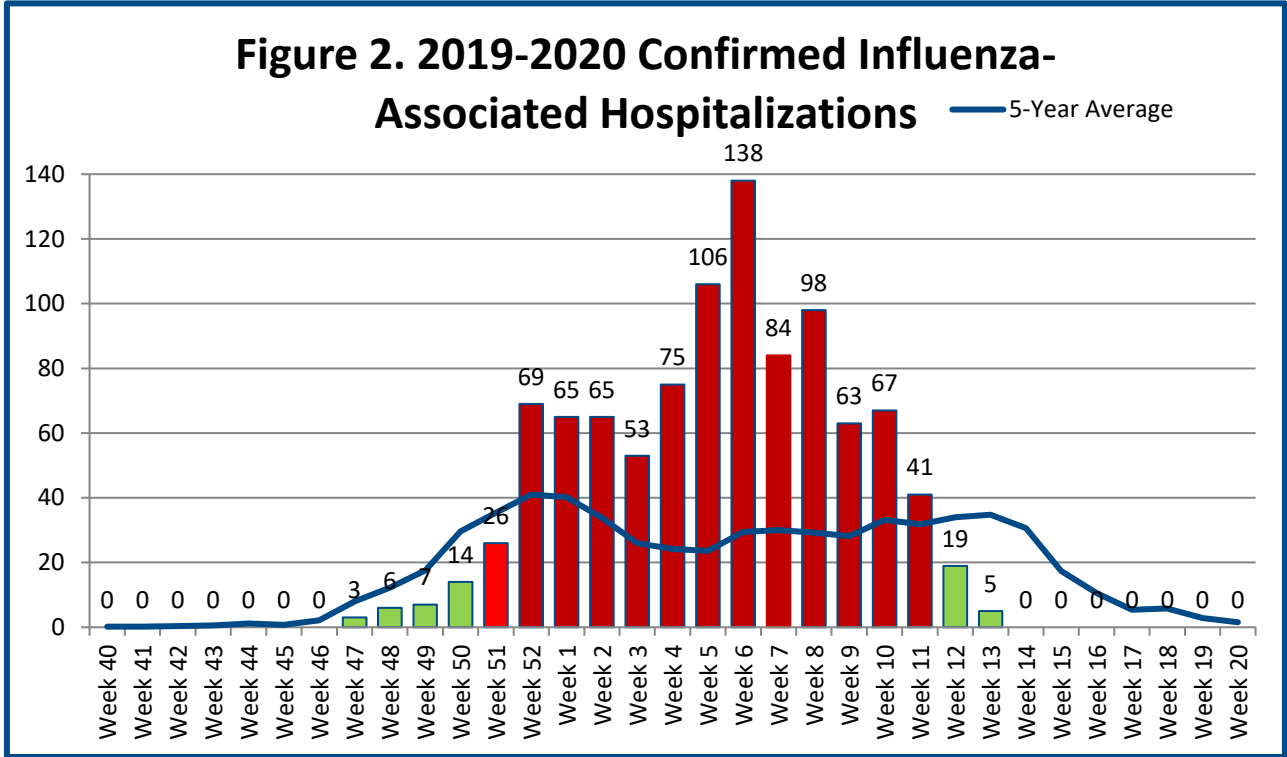
The proportion of Emergency Room visits for influenza-like illnesses remains elevated beyond what has been observed in 5 years. This week 51% of visits were among males. Regarding race and ethnicity, 45% of visits were Black or African American individuals; 27% were among White or Caucasian individuals; and a little less than one-third (26%) of visits were among other racial groups. Less than a fourth (18%) of visits were among Hispanic or Latin individuals. The median age this week is 25 years.

Data Source: Health Monitoring Systems: EpiCenter 3.5.18. Data extracted on 4/05/2020.

Low, Moderate, and High intensity thresholds are defined as the 50%, 90%, and 99% Confidence Intervals, respectively, based on the 5-Year Average of previous seasons

Hospitalizations

Figure 2. 2019-2020 Confirmed Influenza-Associated Hospitalizations — 5-Year Average



LOW
< 22.71

MODERATE
22.71 – 25.05

HIGH
25.05 – 27.29

VERY HIGH
27.29 <

The number of hospitalizations is below what has been observed over the past 5 years. Influenza A is the predominant strain currently, which was observed among 100% of cases this week. This week, most cases (60%) occurred among Black or African Americans, and 20% were among other populations, which is similar to what has been observed this season. More than half (60%) of all hospitalizations were among females this week. The median age of cases this week was 60 years of age.

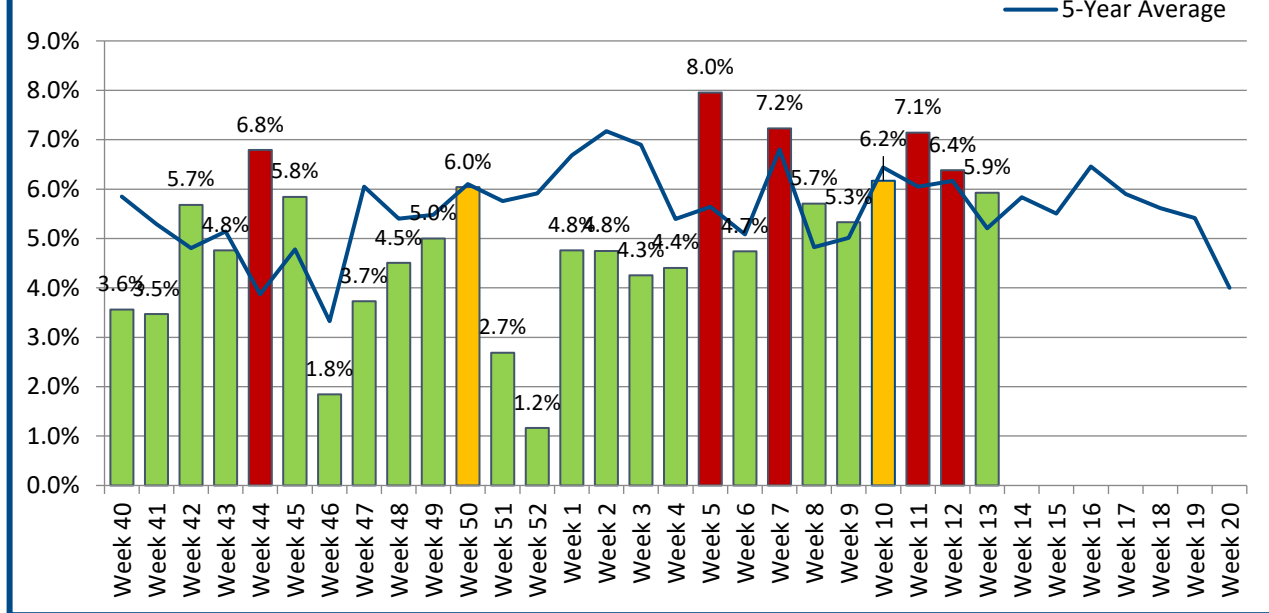
Data Source: Ohio Department of Health: Ohio Disease Reporting System. Data extracted on 04/05/2020. Data are preliminary and subject to change as more information is gained.

* Due to the large number of hospitalizations and delays in reporting, methodology was updated in Week 1 to include cases that are still open but confirmed.

Low, Moderate, and High intensity thresholds are defined as the 50%, 90%, and 99% Confidence Intervals, respectively, based on the 5-Year Average of previous seasons.

Pneumonia- & Influenza-Associated Deaths*

Figure 3. Proportion of Deaths Associated with Pneumonia or Influenza



| | | | |
|-----------------------|----------------------------------|------------------------------|-----------------------------|
| LOW < 6.02% | MODERATE 6.02% - 6.19% | HIGH 6.19% - 6.34% | VERY HIGH 6.34% < |
|-----------------------|----------------------------------|------------------------------|-----------------------------|

There have been 384 deaths this season due to pneumonia or influenza-related illnesses (P&I). The proportion of P&I deaths is within the *very high* threshold this week. This week, the data show the 4 additional influenza specific-related deaths yielding a seasonal total of 43. One (1) of the influenza-related deaths this week occurred within the City of Cleveland. The majority P&I deaths that occurred this season were among individuals aged 45 years and older although the week 1 death was among individuals younger than 45 years. To-date, 14 P&I deaths have occurred among younger age groups.

Data Source: Cleveland Department of Public Health Department of Vital Statistics. Data compiled on 4/01/2020. Data are preliminary and subject to change as more information is gained.

*Deaths represent all deaths for Cuyahoga County. All other data presented are City of Cleveland-specific.

Low, Moderate, and High intensity thresholds are defined as the 50%, 90%, and 99% Confidence Intervals, respectively, based on the 5-Year Average of previous seasons.