

Current Season Summary:

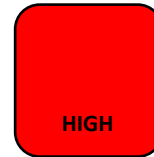
March 29 – April 4, 2020
MMWR Week 14

This week, there were 91 emergency department visits for influenza-like illnesses out of 3,590 total emergency departments visits for any cause; there were 0 confirmed hospitalizations for influenza this week keeping the seasonal total to 1004[‡]; and, there were 19 pneumonia- or influenza-related deaths out of 232 total deaths* for any cause. There were no new influenza outbreaks reported in Week 14 keeping the total number of outbreaks at 8.

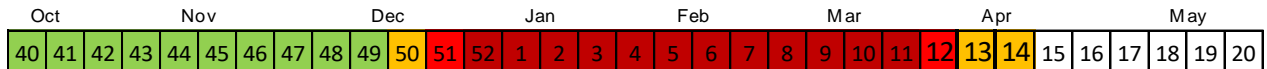
Over the course of this season among those with known vaccination status, 77% of those with Influenza A were not vaccinated and 60% of those with Influenza B were not vaccinated. The CDC reports that this vaccine is a good match for the current circulating strain of Influenza A (H1N1 lineage).

Flu Intensity This Week

For the seventh week in a row, flu activity remains *Moderate*



Seasonal Flu Intensity



| Flu Intensity Indicators | This Week n (%) | Season Total n (%) |
|---|--------------------|-----------------------|
| Emergency Department Visits for Influenza-Like Illnesses | 91 (2.53%) | 4235 (2.53%) |
| Confirmed Influenza Hospitalizations[‡] | 0 | 1004 |
| Pneumonia- & Influenza-Related Deaths* | 19 (8.2%) | 403 (5.2%) |

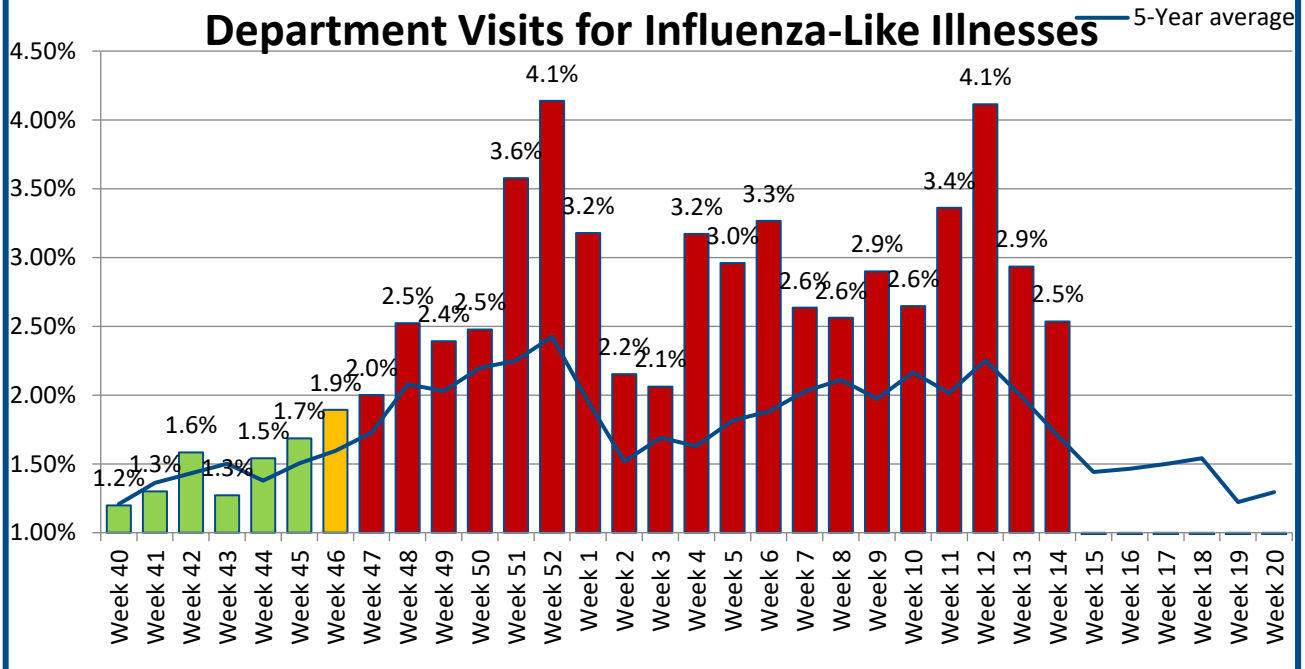
[‡] Due to the large number of hospitalizations and delays in reporting, methodology was updated in Week 1 to include cases that are still open but confirmed.

*Deaths represent all deaths for Cuyahoga County. All other data presented are City of Cleveland-specific. Data are preliminary and subject to change as more information is gained.

The three indicators for calculating the intensity thresholds are based [on 2017 methodology from the Centers for Disease Control and Prevention.](#)

Influenza-Like Illnesses

Figure 1: 2019-2020 Proportion of Emergency Department Visits for Influenza-Like Illnesses



LOW
< 1.88%

MODERATE
1.88% - 1.94%

HIGH
1.94% - 1.99%

VERY HIGH
1.99% <

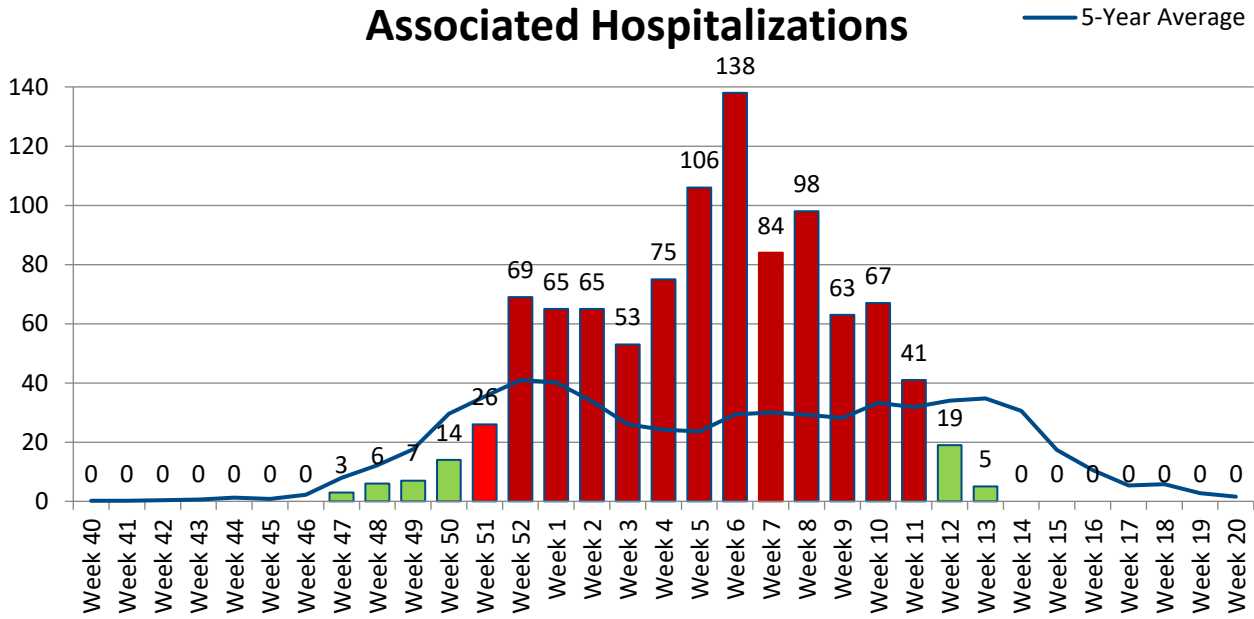
The proportion of Emergency Room visits for influenza-like illnesses remains elevated beyond what has been observed in 5 years. This week 51% of visits were among males. Regarding race and ethnicity, 45% of visits were Black or African American individuals; 27% were among White or Caucasian individuals; and a little less than one-third (26%) of visits were among other racial groups. Less than a fourth (18%) of visits were among Hispanic or Latin individuals. The median age this week is 25 years.

Data Source: Health Monitoring Systems: EpiCenter 3.5.18. Data extracted on 4/10/2020.

Low, Moderate, and High intensity thresholds are defined as the 50%, 90%, and 99% Confidence Intervals, respectively, based on the 5-Year Average of previous seasons

Hospitalizations

Figure 2. 2019-2020 Confirmed Influenza-Associated Hospitalizations



LOW
< 22.71

MODERATE
22.71 – 25.05

HIGH
25.05 – 27.29

VERY HIGH
27.29 <

The number of hospitalizations is below what has been observed over the past 5 years. There were no hospitalizations this week.

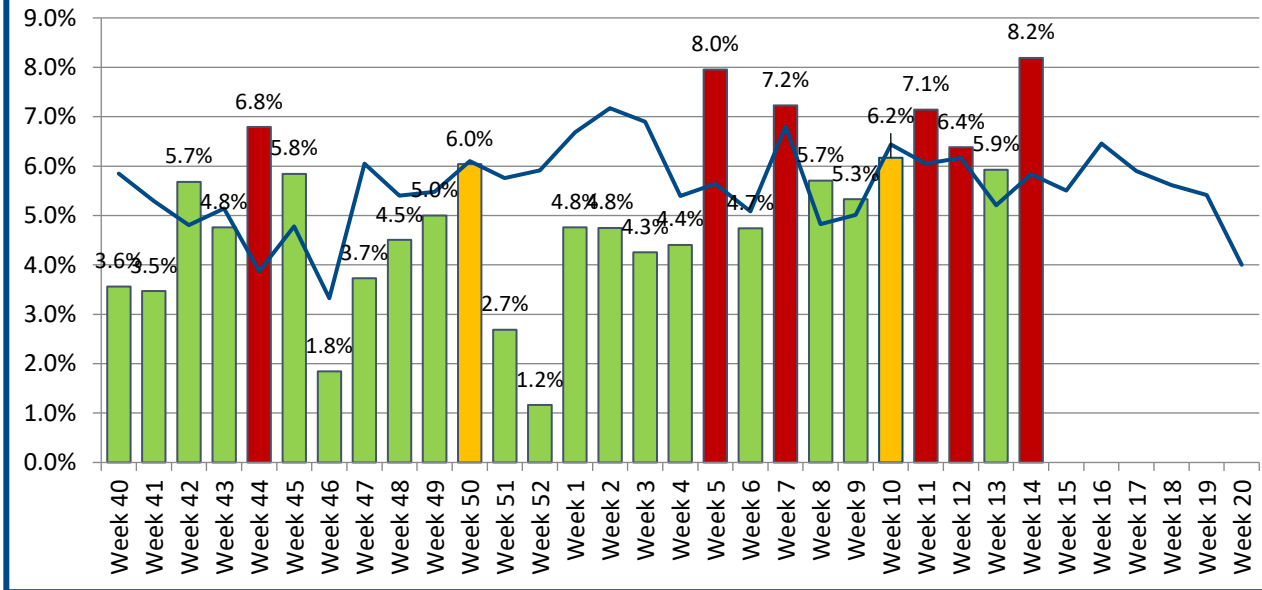
Data Source: Ohio Department of Health: Ohio Disease Reporting System. Data extracted on 04/17/2020. Data are preliminary and subject to change as more information is gained.

‡ Due to the large number of hospitalizations and delays in reporting, methodology was updated in Week 1 to include cases that are still open but confirmed.

Low, Moderate, and High intensity thresholds are defined as the 50%, 90%, and 99% Confidence Intervals, respectively, based on the 5-Year Average of previous seasons.

Pneumonia- & Influenza-Associated Deaths*

Figure 3. Proportion of Deaths Associated with Pneumonia or Influenza — 5-Year Average



| | | | |
|-----------------------|----------------------------------|------------------------------|----------------------------|
| LOW < 6.02% | MODERATE 6.02% - 6.19% | HIGH 6.19% - 6.34% | VERY HIGH 6.34%< |
|-----------------------|----------------------------------|------------------------------|----------------------------|

There have been 403 deaths this season due to pneumonia or influenza-related illnesses (P&I). The proportion of P&I deaths is within the *very high* threshold this week. This week, the data show the 4 additional influenza specific-related deaths yielding a seasonal total of 47. Zero of the influenza-related deaths this week occurred within the City of Cleveland. The majority P&I deaths that occurred this season were among individuals aged 45 years and older although the week 1 death was among individuals younger than 45 years. To-date, 14 P&I deaths have occurred among younger age groups.

Data Source: Cleveland Department of Public Health Department of Vital Statistics. Data compiled on 4/08/2020. Data are preliminary and subject to change as more information is gained.

*Deaths represent all deaths for Cuyahoga County. All other data presented are City of Cleveland-specific.

Low, Moderate, and High intensity thresholds are defined as the 50%, 90%, and 99% Confidence Intervals, respectively, based on the 5-Year Average of previous seasons.