

Current Season Summary:

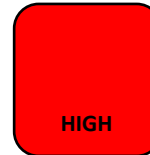
January 5 – January 11, 2020
MMWR Week 2

This week, there were 147 emergency department visits for influenza-like illnesses out of 6,831 total emergency departments visits for any cause; there were 52 confirmed hospitalizations for influenza this week bringing the seasonal total to 242[‡]; and, there were 19 pneumonia- or influenza-related deaths out of 400 total deaths* for any cause.

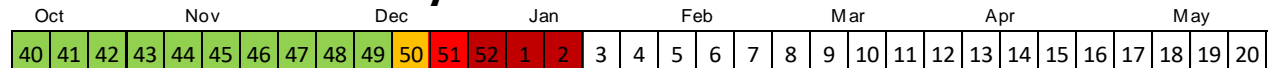
Influenza B is the predominant strain circulating this season and is associated with 73% of cases. Affected populations are *substantially* younger than in the previous 5 seasons. Of those with known vaccination status, 61% of those with Influenza B were not vaccinated and 73% of those with Influenza A were not vaccinated.

Flu Intensity This Week

Flu activity this week is Very High



Seasonal Flu Intensity



Flu Intensity Indicators	This Week n (%)	Season Total n (%)
Emergency Department Visits for Influenza-Like Illnesses	147 (2.15%)	2,125 (2.23%)
Confirmed Influenza Hospitalizations[‡]	52	242
Pneumonia- & Influenza-Related Deaths*	19 (4.8%)	189 (4.4%)

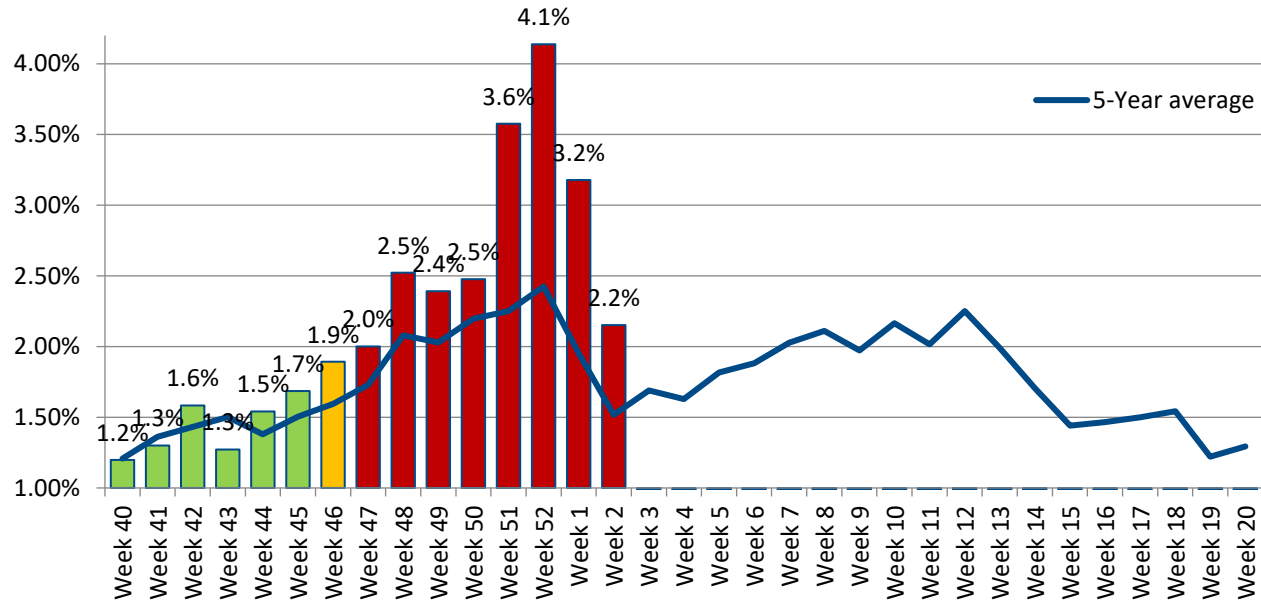
[‡] Due to the large number of hospitalizations and delays in reporting, methodology was updated in Week 1 to include cases that are still open but confirmed.

*Deaths represent all deaths for Cuyahoga County. All other data presented are City of Cleveland-specific. Data are preliminary and subject to change as more information is gained.

The three indicators for calculating the intensity thresholds are based [on 2017 methodology from the Centers for Disease Control and Prevention.](#)

Influenza-Like Illnesses

Figure 1: 2019-2020 Proportion of Emergency Department Visits for Influenza-Like Illnesses



LOW
< 1.88%

MODERATE
1.88% - 1.94%

HIGH
1.94% - 1.99%

VERY HIGH
1.99% <

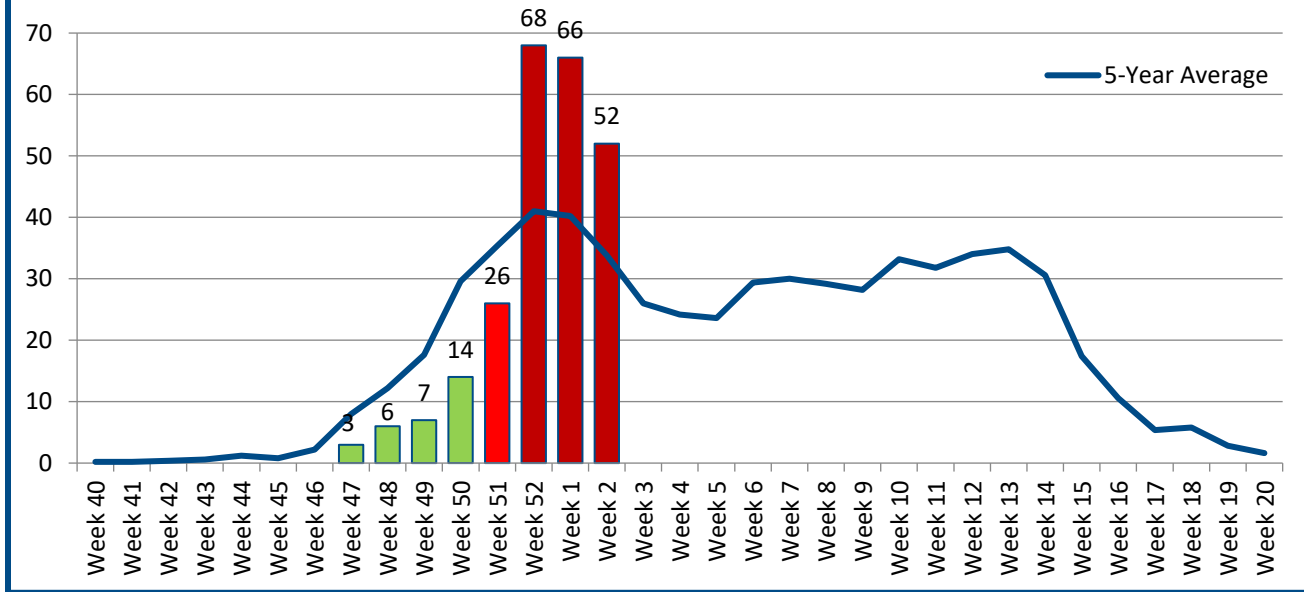
The proportion of Emergency Room visits for influenza-like illnesses remains elevated beyond what has been observed in 5 years. This week 63% of visits were among females. Regarding race and ethnicity, 33% of visits were Black or African American individuals; 32% were among White or Caucasian individuals; and nearly a third (31%) of visits were among other racial groups. One-fourth (27%) of visits were among Hispanic or Latin individuals. The median age this week was 6 years.

Data Source: Health Monitoring Systems: EpiCenter 3.5.18. Data extracted on 1/17/2020.

Low, Moderate, and High intensity thresholds are defined as the 50%, 90%, and 99% Confidence Intervals, respectively, based on the 5-Year Average of previous seasons

Hospitalizations

Figure 2. 2019-2020 Confirmed Influenza-Associated Hospitalizations[‡]



LOW
< 22.71

MODERATE
22.71 – 25.05

HIGH
25.05 – 27.29

VERY HIGH
27.29 <

This season there have been at least 242 confirmed hospitalizations. The majority (64%) of these are Influenza B-related with 4 cases being the Victoria strain. One case tested positive for both Influenza A and Influenza B strains. Most cases (65%) occurred among Black or African Americans, 21% were among White or Caucasian populations, and 7% were among Hispanic or Latinx populations. A little more than half (53%) of all hospitalizations were females. The median age of cases this season is 44 years which is substantially younger than the 5-year median age of 60 years.

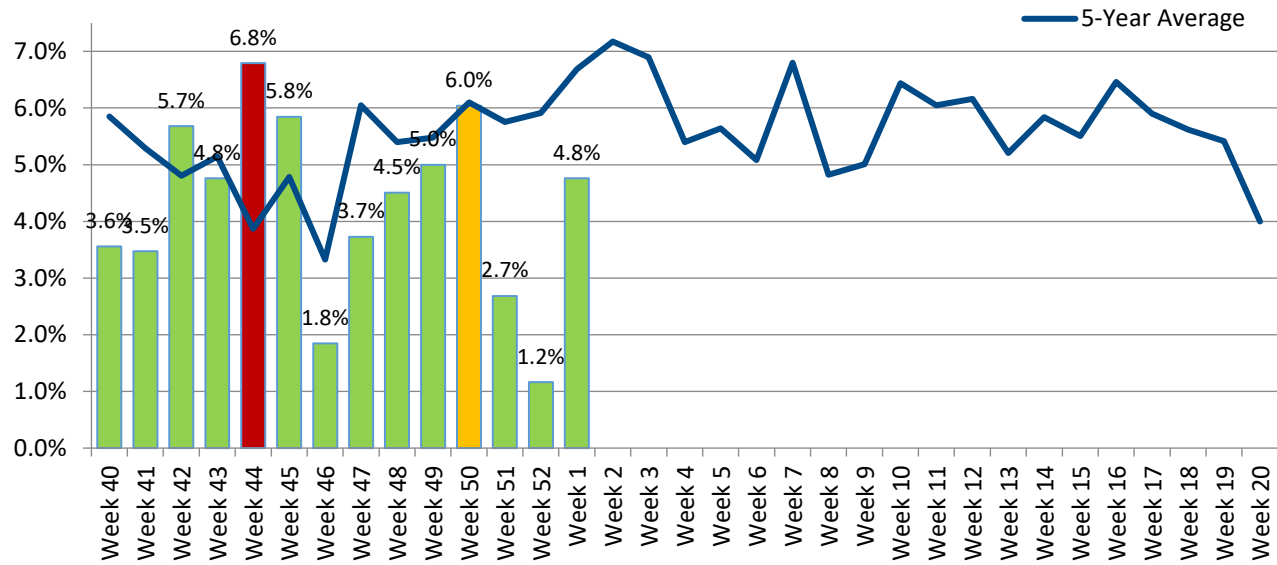
Data Source: Ohio Department of Health: Ohio Disease Reporting System. Data extracted on 1/17/2020. Data are preliminary and subject to change as more information is gained.

[‡] Due to the large number of hospitalizations and delays in reporting, methodology was updated in Week 1 to include cases that are still open but confirmed.

Low, Moderate, and High intensity thresholds are defined as the 50%, 90%, and 99% Confidence Intervals, respectively, based on the 5-Year Average of previous seasons.

Pneumonia- & Influenza-Associated Deaths*

Figure 3. Proportion of Deaths Associated with Pneumonia or Influenza



LOW < 6.02%	MODERATE 6.02% - 6.19%	HIGH 6.19% - 6.34%	VERY HIGH 6.34%<
-----------------------	----------------------------------	------------------------------	----------------------------

There have been 189 deaths due to pneumonia or influenza-related illnesses (P&I). The proportion of P&I deaths is within the *low* threshold this week. This week, the data show the first two influenza specific-related deaths with one death being among an individual younger than 18 years of age. Neither of these deaths occurred within the City of Cleveland. The majority P&I deaths that occurred this season were among individuals aged 45 years and older. To-date, 5 P&I deaths have occurred among younger age groups.

Data Source: Cleveland Department of Public Health Department of Vital Statistics. Data compiled on 1/14/2020. Data are preliminary and subject to change as more information is gained.

*Deaths represent all deaths for Cuyahoga County. All other data presented are City of Cleveland-specific

Low, Moderate, and High intensity thresholds are defined as the 50%, 90%, and 99% Confidence Intervals, respectively, based on the 5-Year Average of previous seasons.