

Current Season Summary:

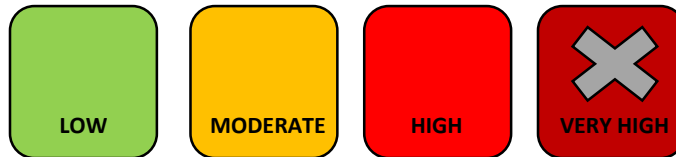
January 12 – January 18, 2020
MMWR Week 3

This week, there were 131 emergency department visits for influenza-like illnesses out of 6,355 total emergency departments visits for any cause; there were 49 confirmed hospitalizations for influenza this week bringing the seasonal total to 305[‡]; and, there were 16 pneumonia- or influenza-related deaths out of 376 total deaths* for any cause.

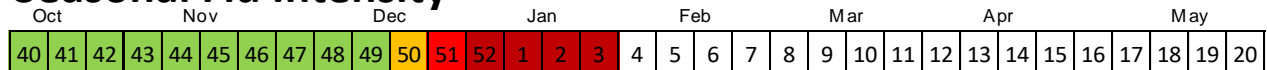
While Influenza B is the predominant strain circulating this season, Influenza A shifted to the predominant strain *this* week. Of those with known vaccination status, 64% of those with Influenza B were not vaccinated and 61% of those with Influenza A were not vaccinated.

Flu Intensity This Week

Flu activity this week is Very High



Seasonal Flu Intensity



Flu Intensity Indicators	This Week n (%)	Season Total n (%)
Emergency Department Visits for Influenza-Like Illnesses	131 (2.06%)	2,256 (2.22%)
Confirmed Influenza Hospitalizations[‡]	49	305
Pneumonia- & Influenza-Related Deaths*	16 (4.3%)	205 (4.4%)

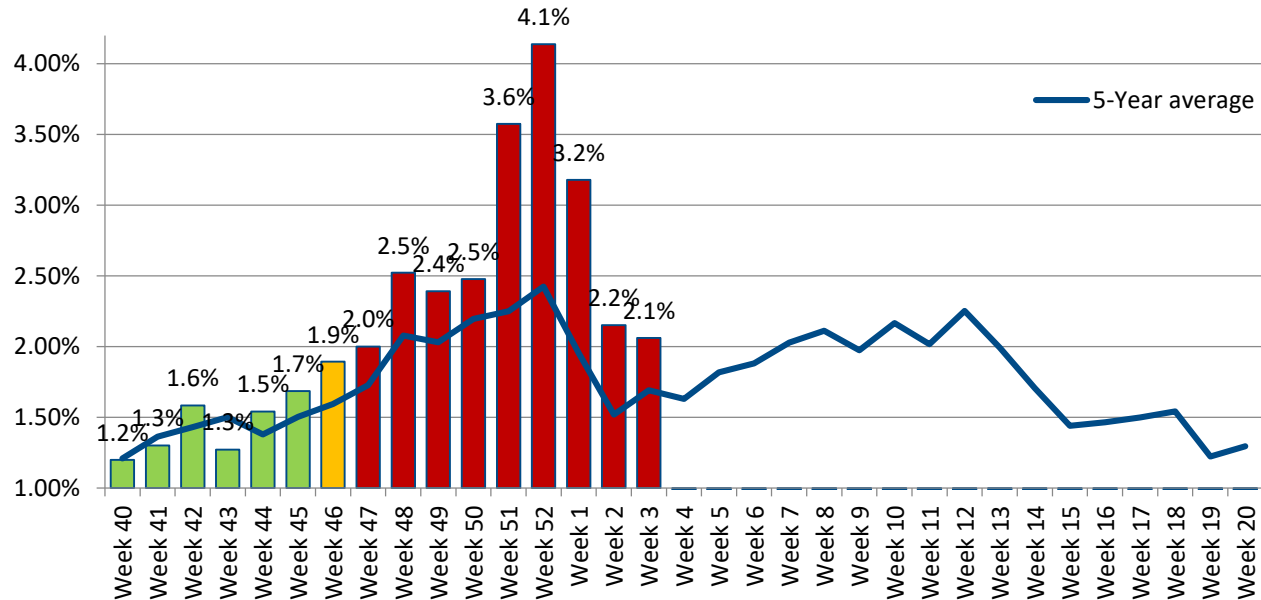
[‡] Due to the large number of hospitalizations and delays in reporting, methodology was updated in Week 1 to include cases that are still open but confirmed.

*Deaths represent all deaths for Cuyahoga County. All other data presented are City of Cleveland-specific. Data are preliminary and subject to change as more information is gained.

The three indicators for calculating the intensity thresholds are based [on 2017 methodology from the Centers for Disease Control and Prevention.](#)

Influenza-Like Illnesses

Figure 1: 2019-2020 Proportion of Emergency Department Visits for Influenza-Like Illnesses



LOW
< 1.88%

MODERATE
1.88% - 1.94%

HIGH
1.94% - 1.99%

VERY HIGH
1.99% <

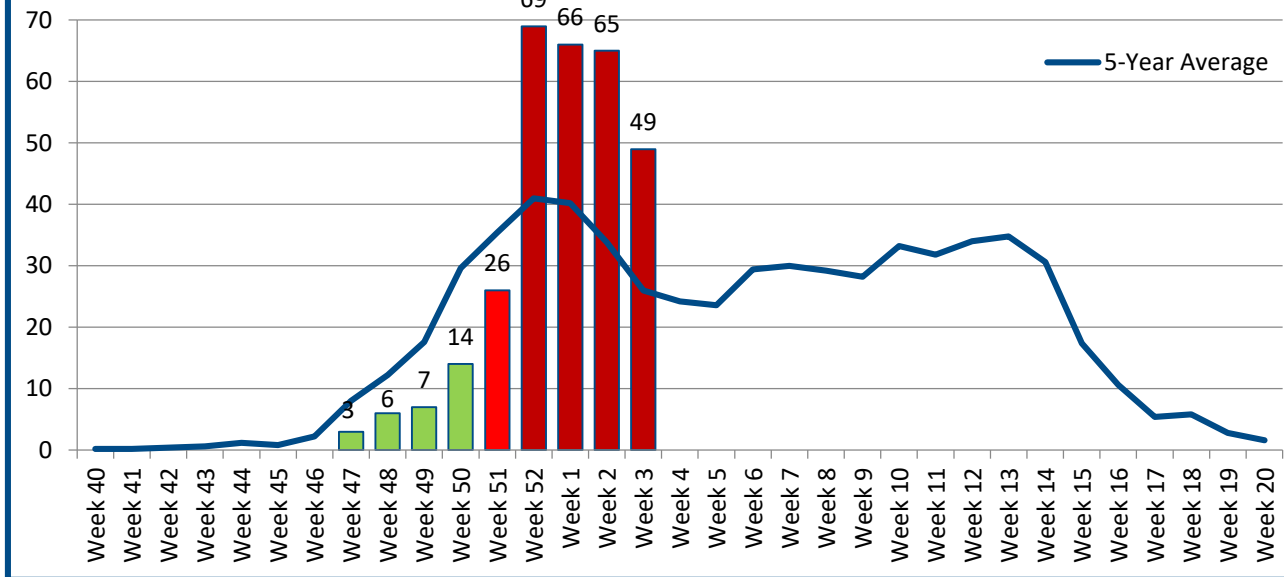
The proportion of Emergency Room visits for influenza-like illnesses remains elevated beyond what has been observed in 5 years. This week 54% of visits were among males. Regarding race and ethnicity, 34% of visits were Black or African American individuals; 30% were among White or Caucasian individuals; and more than a third (36%) of visits were among other racial groups. Nearly a third (32%) of visits were among Hispanic or Latin individuals. The median age this week was 6 years.

Data Source: Health Monitoring Systems: EpiCenter 3.5.18. Data extracted on 1/24/2020.

Low, Moderate, and High intensity thresholds are defined as the 50%, 90%, and 99% Confidence Intervals, respectively, based on the 5-Year Average of previous seasons

Hospitalizations

Figure 2. 2019-2020 Confirmed Influenza-Associated Hospitalizations[¥]



LOW
< 22.71

MODERATE
22.71 – 25.05

HIGH
25.05 – 27.29

VERY HIGH
27.29 <

The number of hospitalizations remains above the average observed over the past 5 years. This week, the predominant strain shifted from Influenza B to Influenza A which was observed among 69% of cases. This week, most cases (65%) occurred among Black or African Americans, 24% were among White or Caucasian populations, and 6% were among Hispanic or Latinx populations, which is similar to what has been observed this season. A little more than half (59%) of all hospitalizations were among males this week which shifts from the seasonal norm of females. Prior to this week, the median age of cases this season was 44 years, but this week the median age grew to 57.5 years.

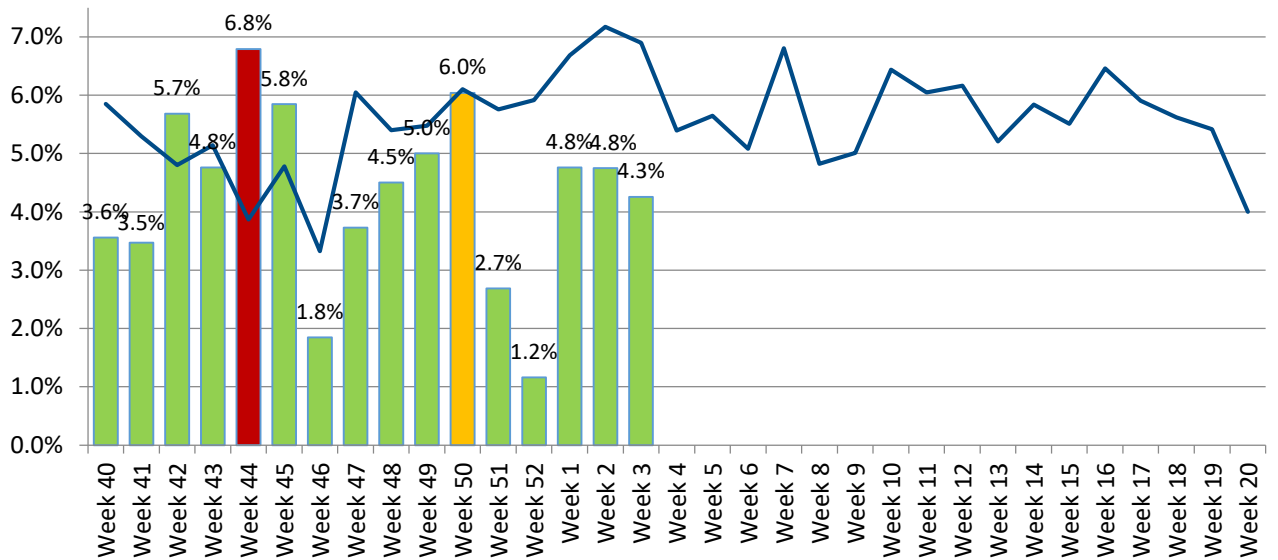
Data Source: Ohio Department of Health: Ohio Disease Reporting System. Data extracted on 1/24/2019. Data are preliminary and subject to change as more information is gained.

[¥] Due to the large number of hospitalizations and delays in reporting, methodology was updated in Week 1 to include cases that are still open but confirmed.

Low, Moderate, and High intensity thresholds are defined as the 50%, 90%, and 99% Confidence Intervals, respectively, based on the 5-Year Average of previous seasons.

Pneumonia- & Influenza-Associated Deaths*

Figure 3. Proportion of Deaths Associated with Pneumonia or Influenza



LOW < 6.02%	MODERATE 6.02% - 6.19%	HIGH 6.19% - 6.34%	VERY HIGH 6.34%<
-----------------------	----------------------------------	------------------------------	----------------------------

There have been 205 deaths this season due to pneumonia or influenza-related illnesses (P&I). The proportion of P&I deaths is within the *low* threshold this week. This week, the data show the two additional influenza specific-related deaths yielding a seasonal total of 4 with one being among an individual younger than 18 years of age. One of these deaths this week occurred within the City of Cleveland. The majority P&I deaths that occurred this season were among individuals aged 45 years and older. To-date, 6 P&I deaths have occurred among younger age groups.

Data Source: Cleveland Department of Public Health Department of Vital Statistics. Data compiled on 1/22/2020. Data are preliminary and subject to change as more information is gained.

*Deaths represent all deaths for Cuyahoga County. All other data presented are City of Cleveland-specific.

Low, Moderate, and High intensity thresholds are defined as the 50%, 90%, and 99% Confidence Intervals, respectively, based on the 5-Year Average of previous seasons.