

**Current Season Summary:**

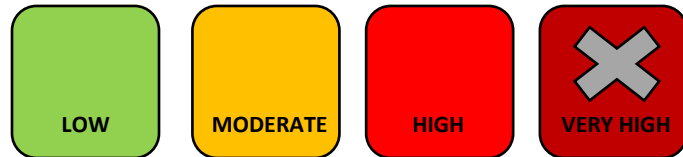
January 19 – January 25, 2020  
MMWR Week 4

This week, there were 203 emergency department visits for influenza-like illnesses out of 6,401 total emergency departments visits for any cause; there were 62 confirmed hospitalizations for influenza this week bringing the seasonal total to 370<sup>‡</sup>; and, there were 13 pneumonia- or influenza-related deaths out of 295 total deaths\* for any cause. There were two influenza outbreaks noted in Week 4. Both outbreaks occurred within Long-Term Care facilities.

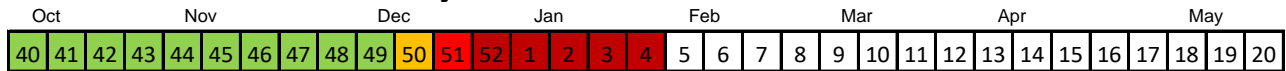
While Influenza B has been the predominant strain circulating this season, however, now Influenza A is the predominant strain noted this week. Of those with known vaccination status, 60% of those with Influenza B were not vaccinated and 62% of those with Influenza A were not vaccinated.

**Flu Intensity This Week**

For the fifth week in a row, flu activity remains *Very High*



**Seasonal Flu Intensity**



Flu Intensity Indicators	This Week n (%)	Season Total n (%)
<b>Emergency Department Visits for Influenza-Like Illnesses</b>	203 (3.17%)	2,459 (2.27%)
<b>Confirmed Influenza Hospitalizations<sup>‡</sup></b>	62	370
<b>Pneumonia- &amp; Influenza-Related Deaths*</b>	13 (4.4%)	218 (4.4%)

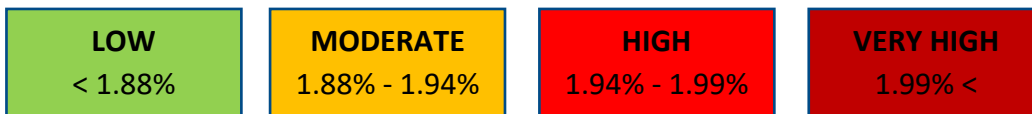
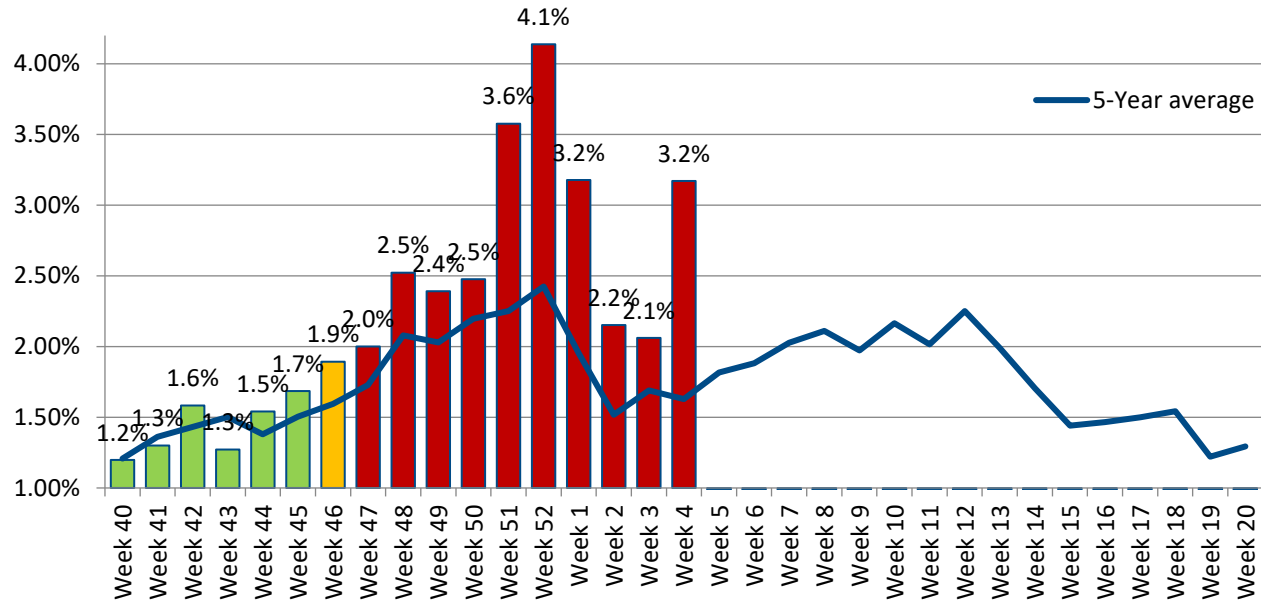
<sup>‡</sup> Due to the large number of hospitalizations and delays in reporting, methodology was updated in Week 1 to include cases that are still open but confirmed.

\*Deaths represent all deaths for Cuyahoga County. All other data presented are City of Cleveland-specific. Data are preliminary and subject to change as more information is gained.

The three indicators for calculating the intensity thresholds are based [on 2017 methodology from the Centers for Disease Control and Prevention.](#)

## Influenza-Like Illnesses

**Figure 1: 2019-2020 Proportion of Emergency Department Visits for Influenza-Like Illnesses**



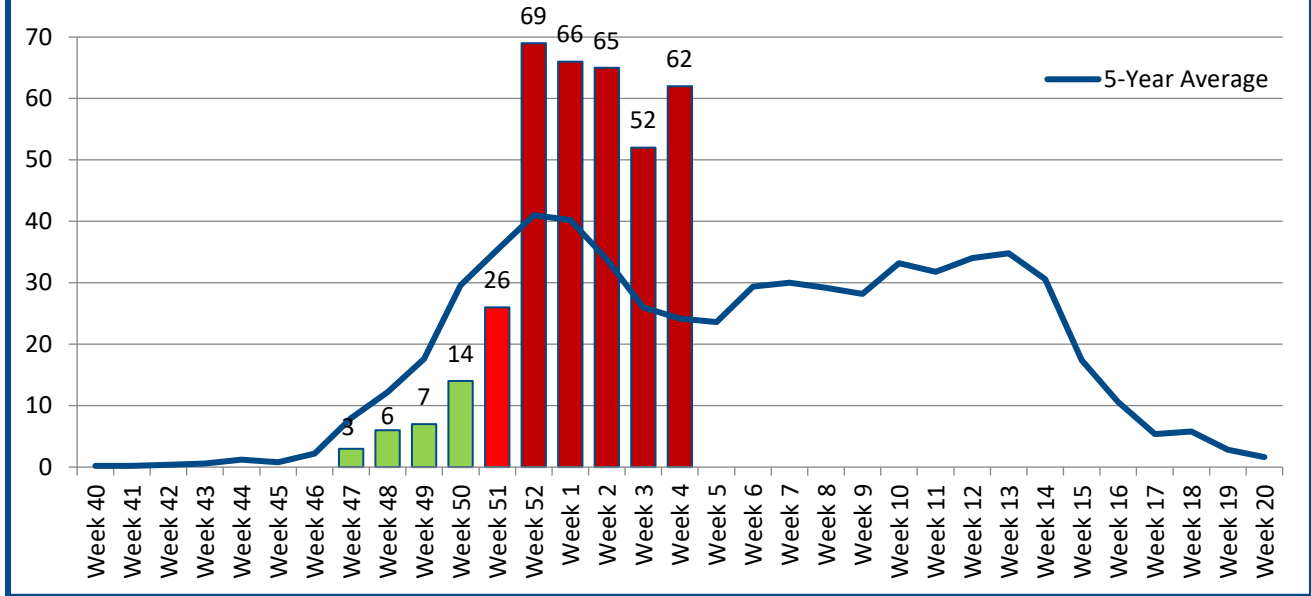
The proportion of Emergency Room visits for influenza-like illnesses remains elevated beyond what has been observed in 5 years. This week 53% of visits were among females. Regarding race and ethnicity, 25% of visits were Black or African American individuals; 19% were among White or Caucasian individuals; and more than a third (39%) of visits were among other racial groups. Nearly a third (31%) of visits were among Hispanic or Latin individuals. The median age this week was 6 years.

Data Source: Health Monitoring Systems: EpiCenter 3.5.18. Data extracted on 1/31/2020.

Low, Moderate, and High intensity thresholds are defined as the 50%, 90%, and 99% Confidence Intervals, respectively, based on the 5-Year Average of previous seasons

## Hospitalizations

**Figure 2. 2019-2020 Confirmed Influenza-Associated Hospitalizations<sup>‡</sup>**



**LOW**  
< 22.71

**MODERATE**  
22.71 – 25.05

**HIGH**  
25.05 – 27.29

**VERY HIGH**  
27.29 <

The number of hospitalizations remains above the average observed over the past 5 years. Last week, the predominant strain shifted from Influenza B to Influenza A, which was observed among 73% of cases this week. This week, most cases (56%) occurred among Black or African Americans, 34% were among White or Caucasian populations, and 5% were among Hispanic or Latinx populations, which is similar to what has been observed this season. A little more than half (55%) of all hospitalizations were among males this week which shifts from the seasonal norm of females. Prior to this week, the median age of cases this week was 50.5 years.

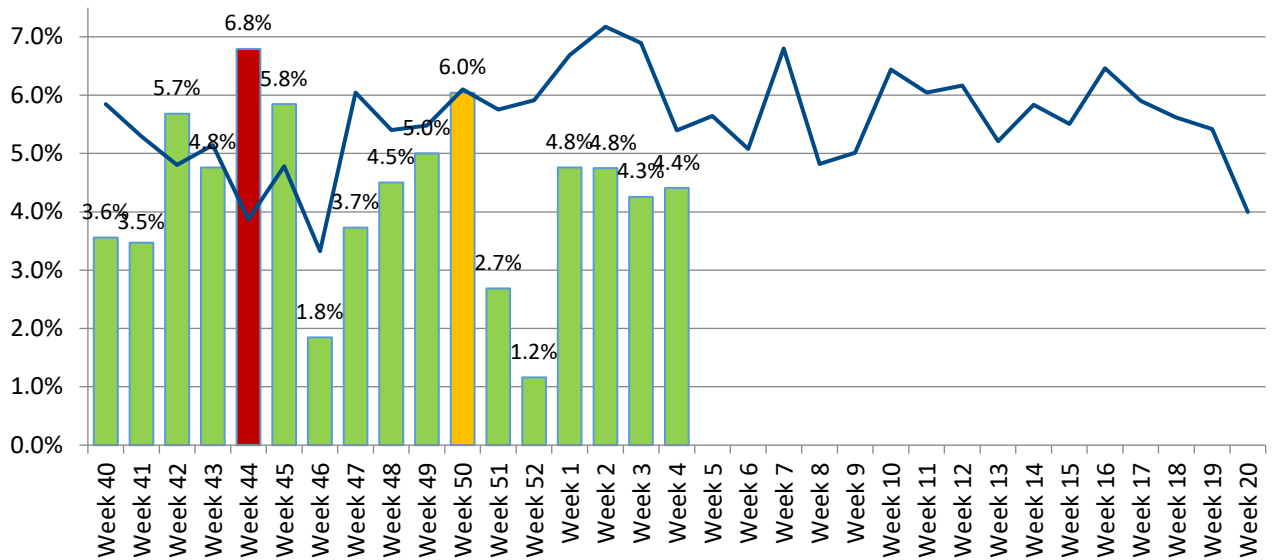
Data Source: Ohio Department of Health: Ohio Disease Reporting System. Data extracted on 1/31/2019. Data are preliminary and subject to change as more information is gained.

<sup>‡</sup> Due to the large number of hospitalizations and delays in reporting, methodology was updated in Week 1 to include cases that are still open but confirmed.

Low, Moderate, and High intensity thresholds are defined as the 50%, 90%, and 99% Confidence Intervals, respectively, based on the 5-Year Average of previous seasons.

**Pneumonia- & Influenza-Associated Deaths\***

**Figure 3. Proportion of Deaths Associated with Pneumonia or Influenza**



<b>LOW</b> < 6.02%	<b>MODERATE</b> 6.02% - 6.19%	<b>HIGH</b> 6.19% - 6.34%	<b>VERY HIGH</b> 6.34%<
-----------------------	----------------------------------	------------------------------	----------------------------

There have been 218 deaths this season due to pneumonia or influenza-related illnesses (P&I). The proportion of P&I deaths is within the *low* threshold this week. This week, the data show the three additional influenza specific-related deaths yielding a seasonal total of 7 with one being among an individual younger than 18 years of age. All three influenza-related deaths this week occurred within the City of Cleveland. The majority P&I deaths that occurred this season were among individuals aged 45 years and older. To-date, 8 P&I deaths have occurred among younger age groups.

Data Source: Cleveland Department of Public Health Department of Vital Statistics. Data compiled on 1/31/2020. Data are preliminary and subject to change as more information is gained.

\*Deaths represent all deaths for Cuyahoga County. All other data presented are City of Cleveland-specific.

Low, Moderate, and High intensity thresholds are defined as the 50%, 90%, and 99% Confidence Intervals, respectively, based on the 5-Year Average of previous seasons.