

## Current Season Summary:

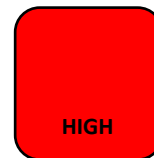
February 2 – February 8, 2020  
MMWR Week 6

This week, there were 222 emergency department visits for influenza-like illnesses out of 6,797 total emergency departments visits for any cause; there were 123 confirmed hospitalizations for influenza this week bringing the seasonal total to 606<sup>‡</sup>; and, there were 12 pneumonia- or influenza-related deaths out of 253 total deaths\* for any cause. There was one influenza outbreak noted in Week 6 bring the total number of outbreaks up to 4.

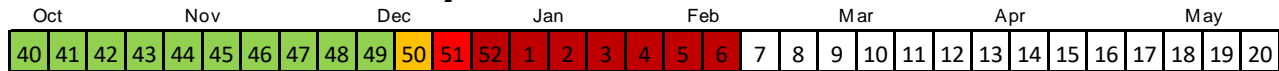
Influenza A is the predominant strain noted this week. Over the course of this season among those with known vaccination status, 60% of those with Influenza A were not vaccinated and 61% of those with Influenza B were not vaccinated. The CDC reports that this vaccine is a good match for the current circulating strain of Influenza A (H1N1 lineage).

### Flu Intensity This Week

For the seventh week in a row, flu activity remains *Very High*



### Seasonal Flu Intensity



Flu Intensity Indicators	This Week n (%)	Season Total n (%)
<b>Emergency Department Visits for Influenza-Like Illnesses</b>	222 (3.27%)	2,883 (2.37%)
<b>Confirmed Influenza Hospitalizations<sup>‡</sup></b>	123	606
<b>Pneumonia- &amp; Influenza-Related Deaths*</b>	12 (4.7%)	258 (4.6%)

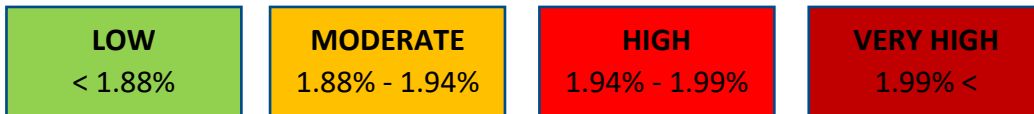
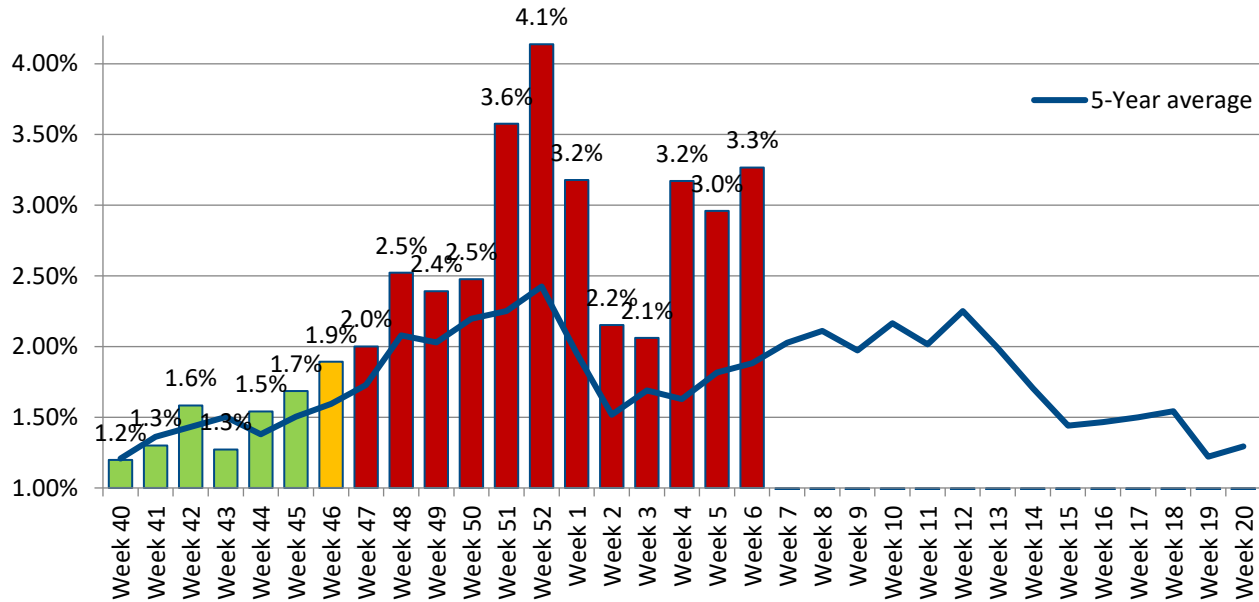
<sup>‡</sup> Due to the large number of hospitalizations and delays in reporting, methodology was updated in Week 1 to include cases that are still open but confirmed.

\*Deaths represent all deaths for Cuyahoga County. All other data presented are City of Cleveland-specific. Data are preliminary and subject to change as more information is gained.

The three indicators for calculating the intensity thresholds are based [on 2017 methodology from the Centers for Disease Control and Prevention.](#)

## Influenza-Like Illnesses

**Figure 1: 2019-2020 Proportion of Emergency Department Visits for Influenza-Like Illnesses**



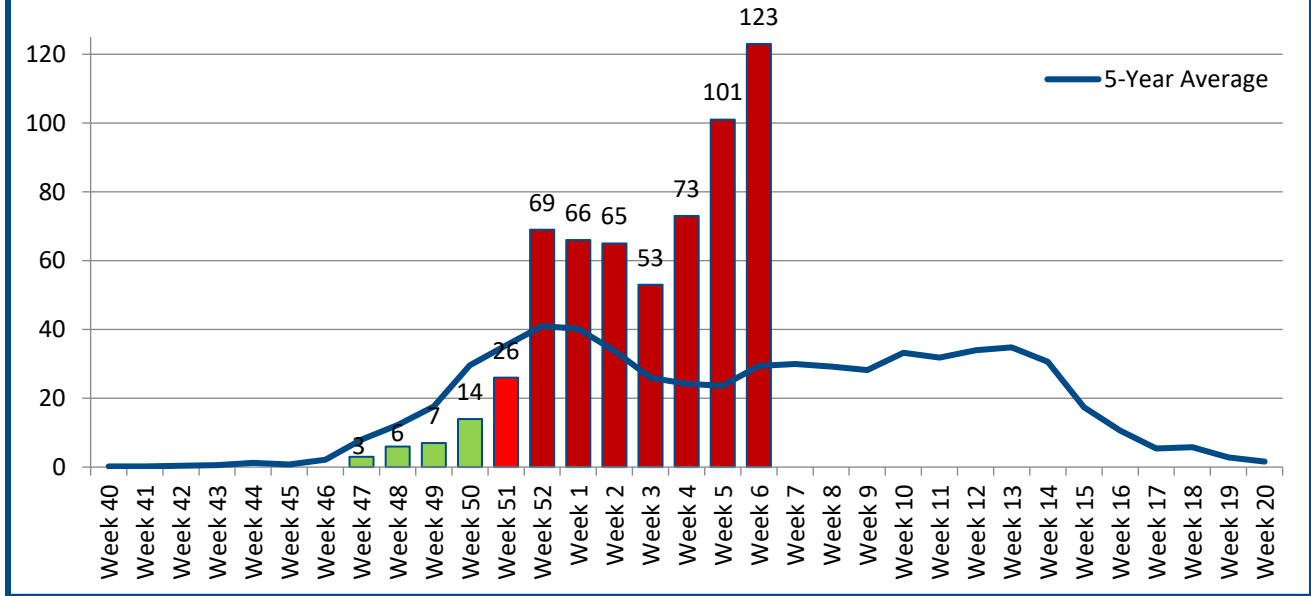
The proportion of Emergency Room visits for influenza-like illnesses remains elevated beyond what has been observed in 5 years. This week 54% of visits were among females. Regarding race and ethnicity, 42% of visits were Black or African American individuals; 23% were among White or Caucasian individuals; and more than a third (34%) of visits were among other racial groups. Nearly a third (30%) of visits were among Hispanic or Latin individuals. The median age this week is 8.5 years.

Data Source: Health Monitoring Systems: EpiCenter 3.5.18. Data extracted on 2/10/2020.

Low, Moderate, and High intensity thresholds are defined as the 50%, 90%, and 99% Confidence Intervals, respectively, based on the 5-Year Average of previous seasons

## Hospitalizations

**Figure 2. 2019-2020 Confirmed Influenza-Associated Hospitalizations<sup>¥</sup>**



**LOW**  
< 22.71

**MODERATE**  
22.71 – 25.05

**HIGH**  
25.05 – 27.29

**VERY HIGH**  
27.29 <

The number of hospitalizations remains above what has been observed over the past 5 years. Influenza A is the predominant strain currently, which was observed among 91% of cases this week. This week, most cases (67%) occurred among Black or African Americans, 23% were among White or Caucasian populations, and 6% were among Hispanic or Latinx populations, which is similar to what has been observed this season. A little more than half (56%) of all hospitalizations were among females this week. The median age of cases this week was 56 years of age.

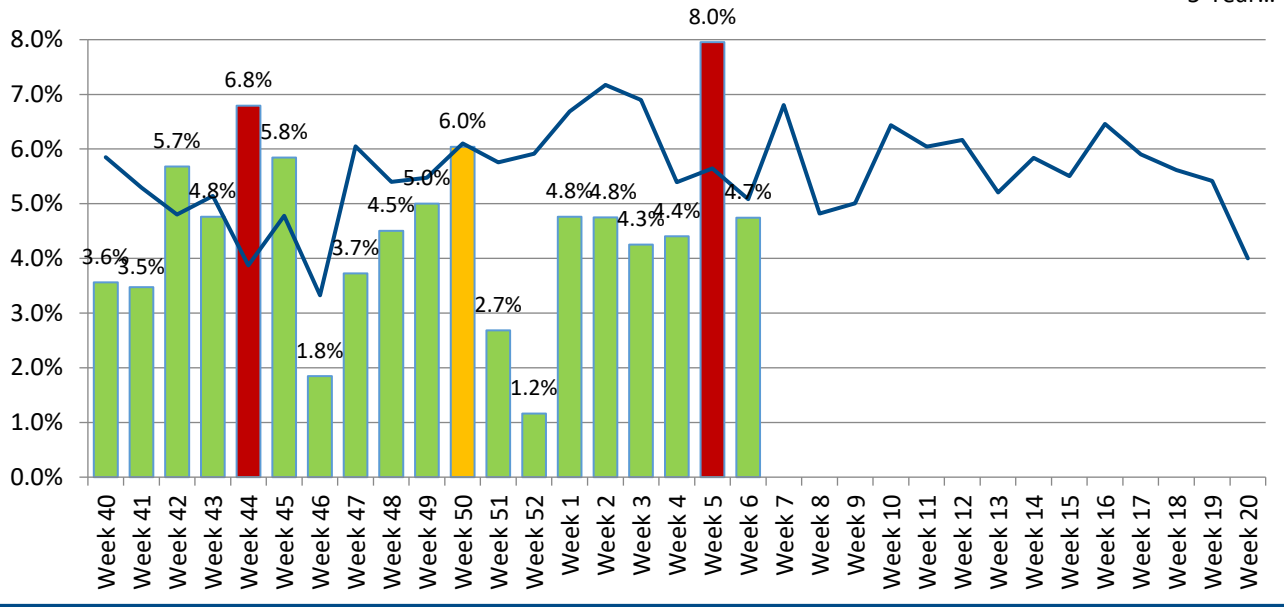
Data Source: Ohio Department of Health: Ohio Disease Reporting System. Data extracted on 2/13/2019. Data are preliminary and subject to change as more information is gained.

<sup>¥</sup> Due to the large number of hospitalizations and delays in reporting, methodology was updated in Week 1 to include cases that are still open but confirmed.

Low, Moderate, and High intensity thresholds are defined as the 50%, 90%, and 99% Confidence Intervals, respectively, based on the 5-Year Average of previous seasons.

**Pneumonia- & Influenza-Associated Deaths\***

**Figure 3. Proportion of Deaths Associated with Pneumonia or Influenza**



<b>LOW</b> < 6.02%	<b>MODERATE</b> 6.02% - 6.19%	<b>HIGH</b> 6.19% - 6.34%	<b>VERY HIGH</b> 6.34%<
-----------------------	----------------------------------	------------------------------	----------------------------

There have been 258 deaths this season due to pneumonia or influenza-related illnesses (P&I). The proportion of P&I deaths is within the *low* threshold this week. This week, the data show the 2 additional influenza specific-related deaths yielding a seasonal total of 13 with one being among an individual younger than 18 years of age. None of the influenza-related deaths this week occurred within the City of Cleveland. The majority P&I deaths that occurred this season were among individuals aged 45 years and older although this week 1 death was among individuals younger than 45 years. To-date, 12 P&I deaths have occurred among younger age groups.

Data Source: Cleveland Department of Public Health Department of Vital Statistics. Data compiled on 2/11/2020. Data are preliminary and subject to change as more information is gained.

\*Deaths represent all deaths for Cuyahoga County. All other data presented are City of Cleveland-specific.

Low, Moderate, and High intensity thresholds are defined as the 50%, 90%, and 99% Confidence Intervals, respectively, based on the 5-Year Average of previous seasons.