

Current Season Summary:

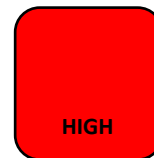
February 9 – February 15, 2020
MMWR Week 7

This week, there were 173 emergency department visits for influenza-like illnesses out of 6,564 total emergency departments visits for any cause; there were 72 confirmed hospitalizations for influenza this week bringing the seasonal total to 700[‡]; and, there were 24 pneumonia- or influenza-related deaths out of 332 total deaths* for any cause. There were two influenza outbreaks noted in Week 7 bring the total number of outbreaks up to 7.

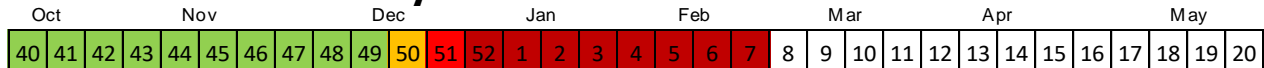
Influenza A is the predominant strain noted this week. Over the course of this season among those with known vaccination status, 60% of those with Influenza A were not vaccinated and 70% of those with Influenza B were not vaccinated. The CDC reports that this vaccine is a good match for the current circulating strain of Influenza A (H1N1 lineage).

Flu Intensity This Week

For the seventh week in a row, flu activity remains *Very High*



Seasonal Flu Intensity



Flu Intensity Indicators	This Week n (%)	Season Total n (%)
Emergency Department Visits for Influenza-Like Illnesses	173 (2.64%)	3,056 (2.38%)
Confirmed Influenza Hospitalizations[‡]	72	700
Pneumonia- & Influenza-Related Deaths*	24 (7.2%)	282 (4.8%)

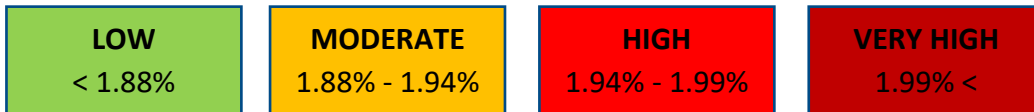
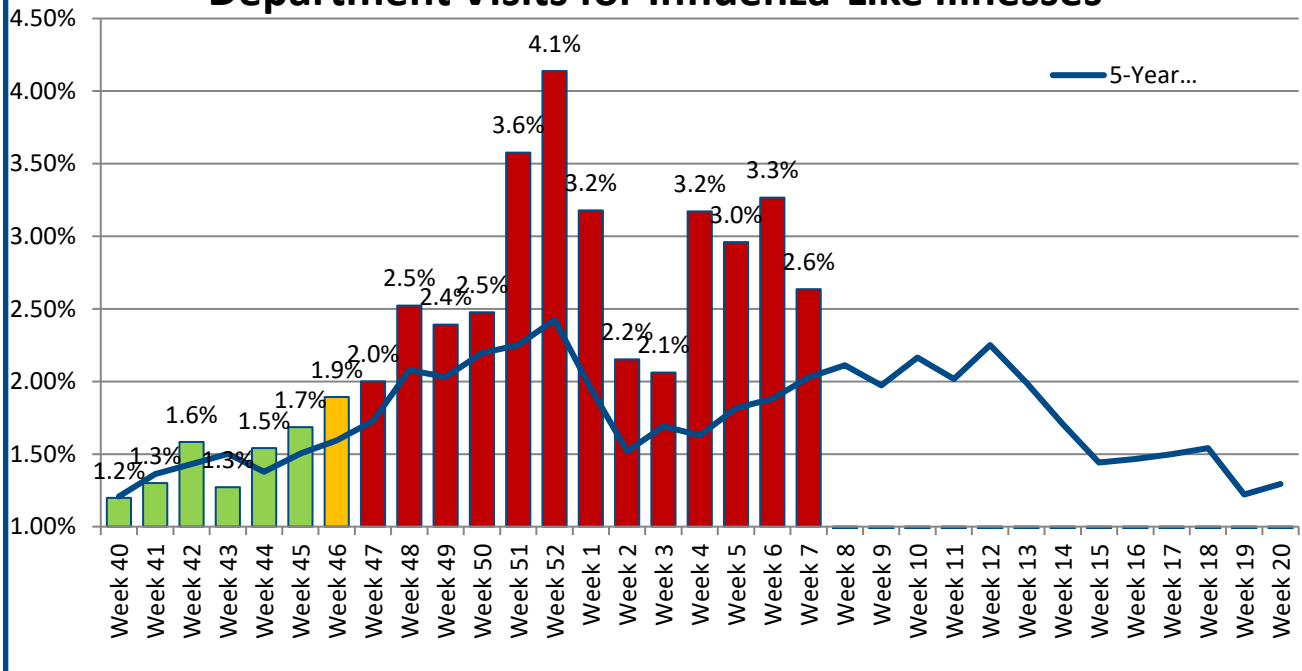
[‡] Due to the large number of hospitalizations and delays in reporting, methodology was updated in Week 1 to include cases that are still open but confirmed.

*Deaths represent all deaths for Cuyahoga County. All other data presented are City of Cleveland-specific. Data are preliminary and subject to change as more information is gained.

The three indicators for calculating the intensity thresholds are based [on 2017 methodology from the Centers for Disease Control and Prevention.](#)

Influenza-Like Illnesses

Figure 1: 2019-2020 Proportion of Emergency Department Visits for Influenza-Like Illnesses

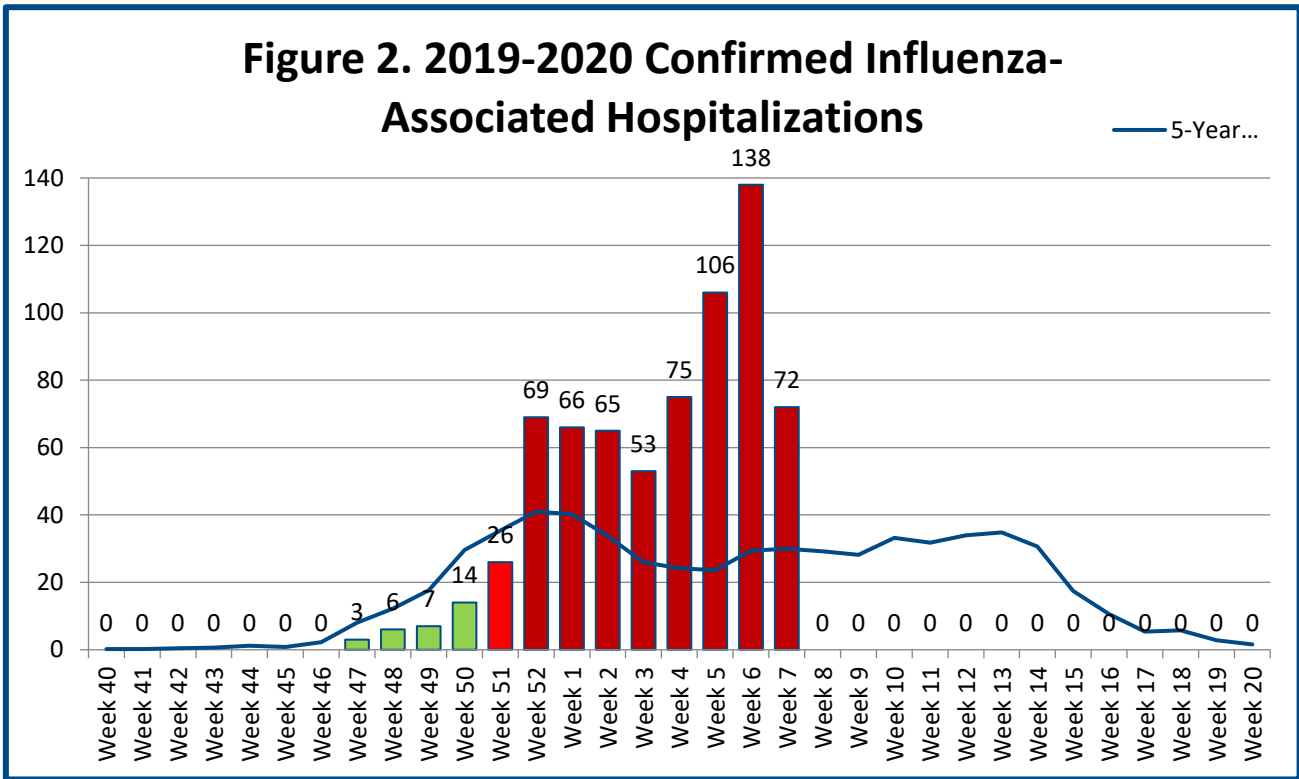


The proportion of Emergency Room visits for influenza-like illnesses remains elevated beyond what has been observed in 5 years. This week 53% of visits were among males. Regarding race and ethnicity, 42% of visits were Black or African American individuals; 21% were among White or Caucasian individuals; and more than a third (38%) of visits were among other racial groups. Nearly a third (30%) of visits were among Hispanic or Latin individuals. The median age this week is 7 years.

Data Source: Health Monitoring Systems: EpiCenter 3.5.18. Data extracted on 2/10/2020.
Low, Moderate, and High intensity thresholds are defined as the 50%, 90%, and 99% Confidence Intervals, respectively, based on the 5-Year Average of previous seasons

Hospitalizations

Figure 2. 2019-2020 Confirmed Influenza-Associated Hospitalizations



LOW
< 22.71

MODERATE
22.71 – 25.05

HIGH
25.05 – 27.29

VERY HIGH
27.29 <

The number of hospitalizations remains above what has been observed over the past 5 years. Influenza A is the predominant strain currently, which was observed among 88% of cases this week. This week, most cases (53%) occurred among Black or African Americans, 26% were among White or Caucasian populations, and 11% were among Hispanic or Latin populations, which is similar to what has been observed this season. A little more than half (57%) of all hospitalizations were among females this week. The median age of cases this week was 58 years of age.

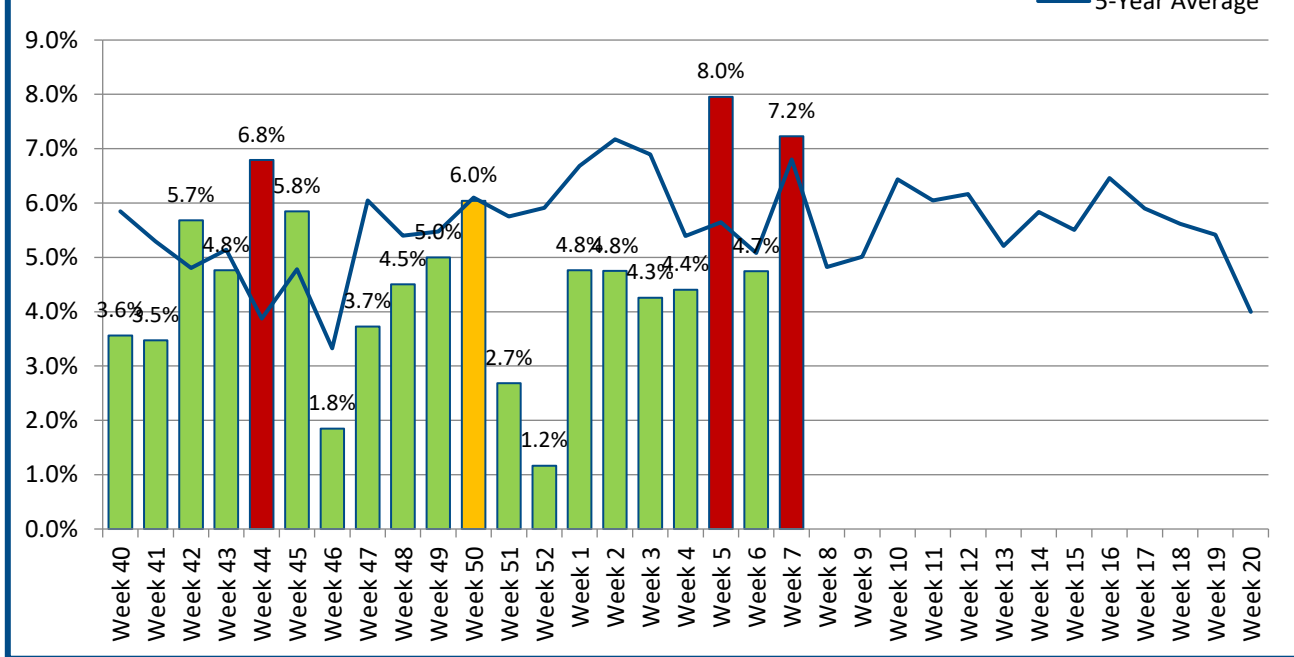
Data Source: Ohio Department of Health: Ohio Disease Reporting System. Data extracted on 2/13/2019. Data are preliminary and subject to change as more information is gained.

* Due to the large number of hospitalizations and delays in reporting, methodology was updated in Week 1 to include cases that are still open but confirmed.

Low, Moderate, and High intensity thresholds are defined as the 50%, 90%, and 99% Confidence Intervals, respectively, based on the 5-Year Average of previous seasons.

Pneumonia- & Influenza-Associated Deaths*

Figure 3. Proportion of Deaths Associated with Pneumonia or Influenza



LOW < 6.02%	MODERATE 6.02% - 6.19%	HIGH 6.19% - 6.34%	VERY HIGH 6.34% <
-----------------------	----------------------------------	------------------------------	-----------------------------

There have been 282 deaths this season due to pneumonia or influenza-related illnesses (P&I). The proportion of P&I deaths is within the *very high* threshold this week. This week, the data show the 7 additional influenza specific-related deaths yielding a seasonal total of 20. None of the influenza-related deaths this week occurred within the City of Cleveland. The majority P&I deaths that occurred this season were among individuals aged 45 years and older although the week 1 death was among individuals younger than 45 years. To-date, 13 P&I deaths have occurred among younger age groups.

Data Source: Cleveland Department of Public Health Department of Vital Statistics. Data compiled on 2/11/2020. Data are preliminary and subject to change as more information is gained.

*Deaths represent all deaths for Cuyahoga County. All other data presented are City of Cleveland-specific.

Low, Moderate, and High intensity thresholds are defined as the 50%, 90%, and 99% Confidence Intervals, respectively, based on the 5-Year Average of previous seasons.